

Recommendations on fabric: natural or mixed dress fabric.

You will also need: fusible interfacing, invisible zipper, decorative clasp, 18 buttons.

Seam allowances: hem – 3.0 cm, along vent - 6.0 cm, other seams – 1.0 cm.

Note on seam allowances:

- If the pattern has double contour the seam allowances are included. They are 1 cm unless specified otherwise.

- If the pattern has single contour, the seam allowances are NOT included and need to be added when laying out the pattern.

Note on length of fabric:

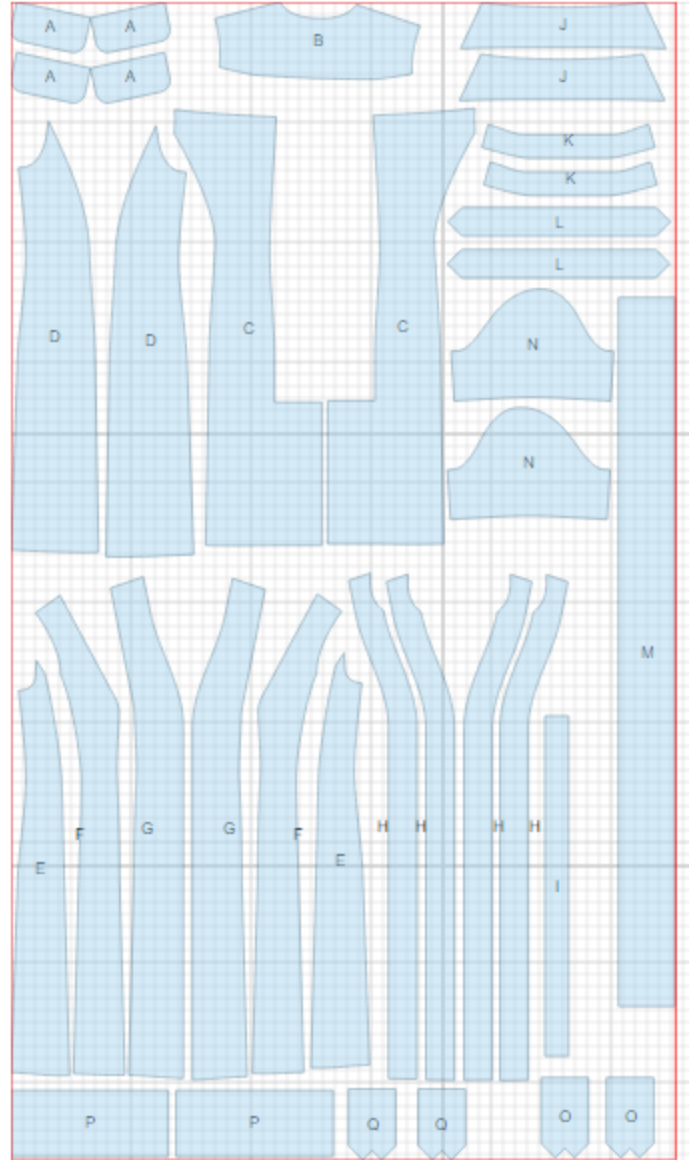
Attention! The amount of fabric needed for your pattern is not included. It will depend on the selected pattern size, the width, and design of the fabric you plan to use. First, print all the paper patterns and lay them out at the width of fabric you plan to use (usually from 90 to 150 cm). Measure how much fabric you will need. Don't forget to account for pieces that need to be cut multiple times and pieces that are cut on the fold.



CUTTING:

Main fabric:

1. Flap - cut 4 (A)
2. Back yoke - cut 1 (B)
3. Center back - cut 2 (C)
4. Side back - cut 2 (D)
5. Side front - cut 2 (E)
6. Middle front - cut 2 (F)
7. Center front - cut 2 (G)
8. Front placket - cut 4 (H)
9. Belt loop - cut 1 (I)
10. Collar - cut 2 (J)
11. Collar stand - cut 2 (K)
12. Collar placket - cut 2 (L)
13. Belt - cut 1 (M)
14. Sleeve - cut 2 (N)
15. Sleeve strap - cut 2 (O)
16. Cuff - cut 2 (P)
17. Epaulette - cut 2 (Q)



Fusible interfacing:

1. Front placket - cut 2 (H)
2. Collar - cut 1 (J)
3. Collar stand - cut 1 (K)
4. Flap cut 2 (A)
5. Collar placket - cut 1 (L)
6. Cuff - cut 2 (P)

INSTRUCTIONS:

1. Apply fusible interfacing to listed pieces.
2. Sew side backs to center backs. Serge and press seams towards center. Topstitch at 0.5 cm from seam.
3. On left lower back, along vertical vent edge, cut off 5 cm. Apply fusible interfacing to wrong side of the vent on both back pieces. On right side mark center seam line (vent fold-line). Press left side along vent fold line. On right side, press seam allowance to wrong side of vent (6 cm). Match backs on center seam and fasten on upper edge of vent. Serge center back seam separately on each side. Serge vent seam allowances. Sew center back seam from zipper mark to vent corner. Trim corner of vent seam allowance on right side. Press center seam open, press vent allowances and fasten them on right side with machine stitch. Install zipper.
4. Sew back yoke to back. Serge and topstitch at 0.5 cm from seam.
5. Sew side fronts to middle fronts. Serge and press seams towards center. Topstitch at 0.5 cm from seam.
6. Place front plackets right sides together and sew outer edge. Clip seam on curves, turn plackets right side out and press. Sew outer placket to center front, press seam towards placket. Turn inner placket edge at 1 cm under and topstitch into connecting seam. Topstitch at 0.5 cm from seam and from fold. Lay right front over left front and topstitch connecting fronts by that. End stitch at lower button mark.
7. Place flaps right sides together and sew side and lower edges. Clip seam on curves, turn flaps right side out, straighten and press. Topstitch at 0.5 cm from edge. Serge upper edge of flaps. Sew flaps to fronts, turn down and topstitch.
8. Serge left side edges separately. Sew left side seam from armhole to upper zipper mark, and from lower zipper mark down to hem. Press seam open. Install zipper. Sew right side seam, serge and press towards back.
9. Sew shoulder seams. Serge and press seams towards back.
10. Fold epaulette in half lengthwise right sides together and sew long side and corner. Turn epaulette right side out, straighten and press. Topstitch on contour at 0.5 cm from edge. Place epaulette on shoulder seam and fasten on neckline.

-
11. Sew collar placket to collar. Press seam towards placket and topstitch at 0.5 cm from seam. Place lower and outer collar right sides together and sew ends and outer edge. Trim seam in corners, turn collar right side out, straighten and press. Place collar stands right sides together, insert collar between them, match marks and sew, stitching ends of collar stand at the same time. Start and end stitch exactly at marked line of collar connecting seam. Turn whole collar out, straighten and press.
 12. Sew outer collar into neckline. Turn edge of inner collar under and topstitch into collar connecting seam. Topstitch on collar contour at 0.5 cm from edge.
 13. Fold sleeve strap in half lengthwise right sides together and sew long side and corner. Turn strap right side out, straighten and press.
 14. Sew sleeve seam. Serge and press seam towards back. Sew cuff into ring, press seam open. Fold cuff in half along center line right side out. Insert cuff into sleeve and sew to lower edge of sleeve inserting sleeve strap. Serge seam. Turn cuff to right side, press.
 15. Make a gathering stitch along sleeve cap to adjust ease. Sew sleeves into armholes matching notches and adjusting ease. Serge and press seams.
 16. Fold lower edge of dress under at 1 cm, then again at 2 cm, press, and topstitch.
 17. Serge one long edge of belt loop. Fold loop in three layers and topstitch on long sides. Cut belt loop into 8 pieces. Topstitch loops on waist, shoulder seams and sleeves.
 18. Fold belt in half lengthwise right sides together and sew leaving in long side an opening for turnout. Turn belt right side out and press. Topstitch on all sides at 0.5 cm from edge. Thread belt through clasp. Fasten clasp.
 19. Sew buttons on front, flaps, collar placket, sleeve straps and epaulettes.

TECHNICAL DRAWING:

