

Recommendations on fabric: natural/mixed light-weight fabric suitable for blouses / chiffon.

You will also need: fusible interfacing.

Seam allowances: 1 cm for all seams, 2 cm for garment hem.

**Note on seam allowances:**

- If the pattern has double contour the seam allowances are included. They are 1 cm unless specified otherwise.
- If the pattern has single contour, the seam allowances are NOT included and need to be added when laying out the pattern.

**Note on length of fabric:**

*Attention! The amount of fabric needed for your pattern is not included. It will depend on the selected pattern size, the width, and design of the fabric you plan to use. First, print all the paper patterns and lay them out at the width of fabric you plan to use (usually from 90 to 150 cm). Measure how much fabric you will need. Don't forget to account for pieces that need to be cut multiple times and pieces that are cut on the fold.*



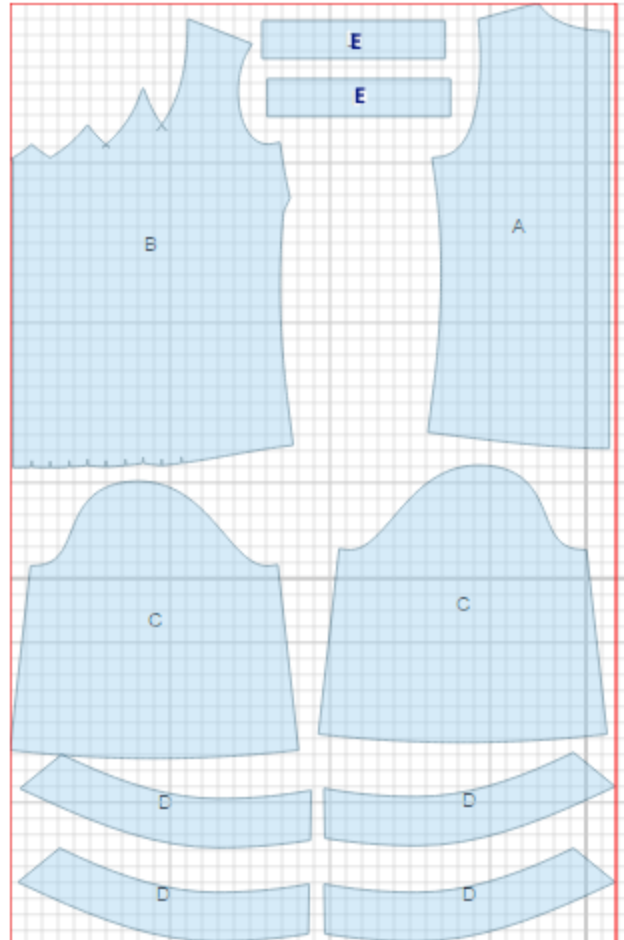
## CUTTING:

### Main fabric:

1. Back - cut 1 on fold (A)
2. Front – cut 1 on fold (B)
3. Sleeve - cut 2 (C)
4. Collar -cut 4 (D)
5. Cuff - cut 2 (E)

### Fusible interfacing:

1. Collar - cut 2 (D)
2. Cuff – cut 2 (E)



---

## INSTRUCTIONS:

1. Apply interfacing to listed pieces.
2. Sew bust darts on front. Press bulk upwards.
3. Place outer and lower collar pairwise right side together and sew ends and outer edge. Trim seams. Turn collar right side out, straighten and press.
4. Make, press and fasten pleats on front.
5. Sew side and shoulder seams. Serge and press seams towards back.
6. Lay right collar piece over left piece and fasten on back edge.
7. Pin collar to right side of blouse and sew. Serge seam and topstitch on blouse at 0.1 cm from connecting seam.
8. Sew sleeve seam, serge and press seam towards back. Make a gathering stitch along sleeve cap to adjust ease.
9. Sew sleeves into armholes matching marks and adjusting ease. Serge and press seams.
10. Sew cuff into ring. Press seam open. Press cuff in half lengthwise right side out. Sew outer cuff to lower edge of sleeve. Turn inner cuff edge under and topstitch into connecting seam.
11. Serge hem of blouse, turn under, press and topstitch.

TECHNICAL DRAWING:

