

Recommendations on fabric: natural or mixed dress fabric.

You will also need: fusible interfacing, 6 cm eyelet.

Seam allowances: hem – 3.0 cm, other seams – 1.0 cm.

Note on seam allowances:

- If the pattern has double contour the seam allowances are included. They are 1 cm unless specified otherwise.
- If the pattern has single contour, the seam allowances are NOT included and need to be added when laying out the pattern.

Note on length of fabric:

Attention! The amount of fabric needed for your pattern is not included. It will depend on the selected pattern size, the width, and design of the fabric you plan to use. First, print all the paper patterns and lay them out at the width of fabric you plan to use (usually from 90 to 150 cm). Measure how much fabric you will need. Don't forget to account for pieces that need to be cut multiple times and pieces that are cut on the fold.



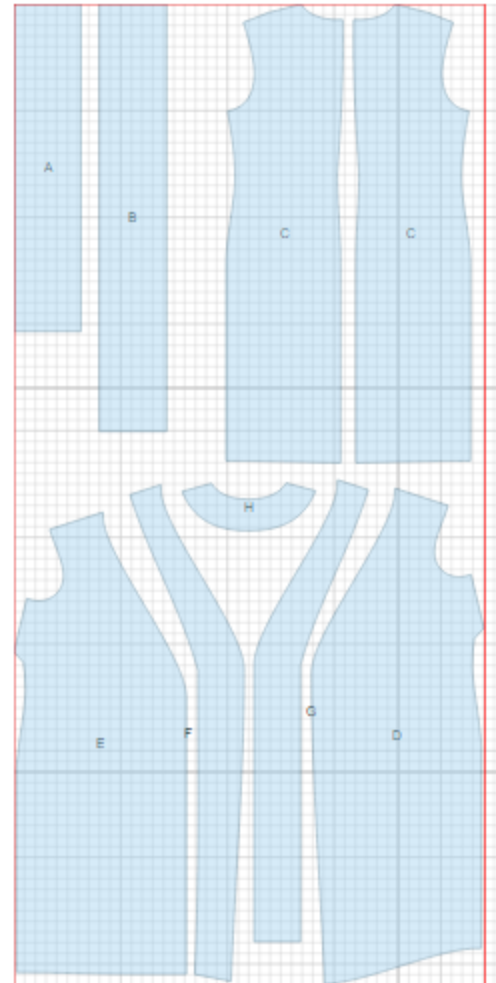
CUTTING:

Main fabric:

1. Short belt - cut 1 (A)
2. Long belt - cut 1 (B)
3. Back - cut 2 (C)
4. Right front - cut 1 (D)
5. Left front - cut 1 (E)
6. Right front facing - cut 1 (F)
7. Left front facing - cut 1 (G)
8. Back neck facing - cut 1 (H)

Fusible interfacing:

1. Right front facing - cut 1 (F)
2. Left front facing - cut 1 (G)
3. Back neck facing - cut 1 (H)



INSTRUCTIONS:

1. Apply fusible interfacing to listed pieces.
2. Sew shoulder and waist darts on back, press bulk towards center. Sew bust darts on fronts, press bulk upwards.
3. Sew center back seam. Serge and press seam towards left.
4. Sew shoulder seams. Serge and press seams towards back.
5. Fold belt pieces in half lengthwise right sides together and sew long and one short edges. Trim seams in corners. Turn belt pieces right side out and press.
6. Cut a bias tape of 4 cm wide and 20 cm long. Fold bias tape in half wrong sides together and press. Turn long edges under and press. Make a fastening stitch along the edge. Cut the tie into two pieces.
7. Lay long belt on left side edge of front. Lay short belt on top, level and pin edges. Sew side seams. Insert one tie into right side seam. Serge and press seams towards back.
8. Sew shoulder seams of neck facings. Press seams open. Serge outer edge. Pin facing to dress, right sides together, and sew along neckline and front band edges inserting tie into left front facing seam. Clip into seam on curves. Turn facing to the inside, straighten and press. Tack facing to shoulder seams. Install eyelet on right front as marked.
9. Cut a bias tape of 4 cm wide. Length is equal to armhole length + 5 cm. Fold bias tape in half wrong sides together and press. Place bias tape on armhole from right side and sew. Clip into seam. Turn bias tape to wrong side and topstitch along the fold. Press.
10. Serge lower edge of dress, fold to wrong side, press, and topstitch.

TECHNICAL DRAWING:

