

Recommendations on fabric: natural/mixed light-weight denim or chambray fabric.

You will also need: fusible interfacing, 12 buttons.

Seam allowances: 1 cm for all seams, 1.5 cm for garment hem.

Note on seam allowances:

- If the pattern has double contour the seam allowances are included. They are 1 cm unless specified otherwise.

- If the pattern has single contour, the seam allowances are NOT included and need to be added when laying out the pattern.

Note on length of fabric:

Attention! The amount of fabric needed for your pattern is not included. It will depend on the selected pattern size, the width, and design of the fabric you plan to use. First, print all the paper patterns and lay them out at the width of fabric you plan to use (usually from 90 to 150 cm). Measure how much fabric you will need. Don't forget to account for pieces that need to be cut multiple times and pieces that are cut on the fold.



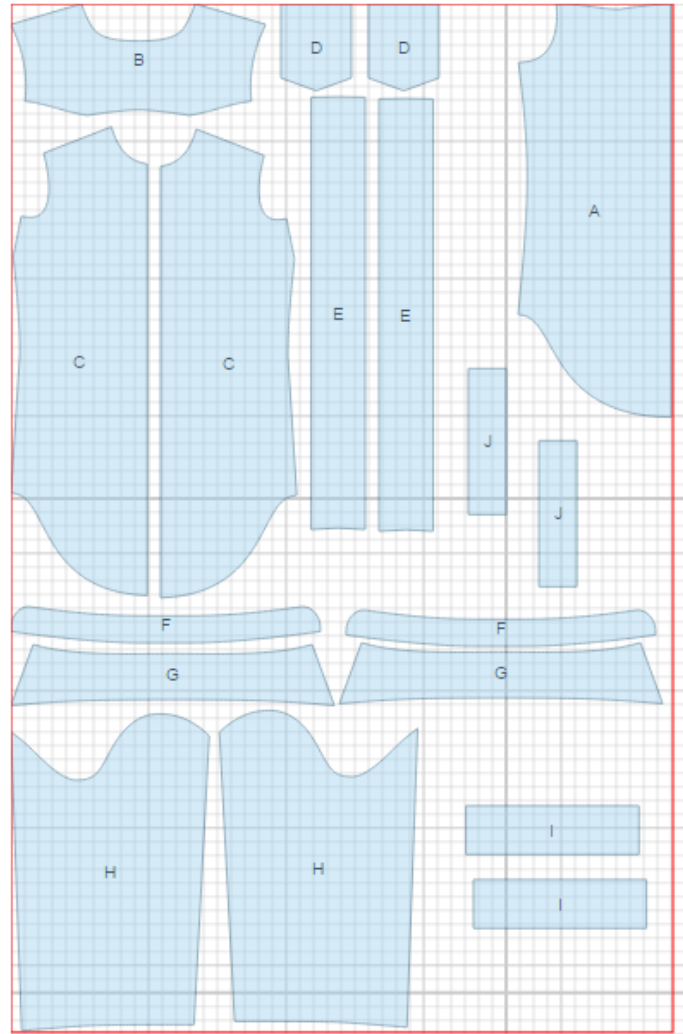
CUTTING:

Main fabric:

1. Lower back - cut 1 on fold (A)
2. Back yoke - cut 1 (B)
3. Front - cut 2 (C)
4. Pocket – cut 2 (D)
5. Placket – cut 2 (E)
6. Collar stand - cut 2 (F)
7. Collar - cut 2 (G)
8. Sleeve - cut 2 (H)
9. Cuff - cut 2 (I)
10. Sleeve placket/strap - cut 2 (J)

Fusible interfacing:

1. Placket – cut 2 (E)
2. Collar stand - cut 1 (F)
3. Collar - cut 1 (G)
4. Cuff - cut 2 (I)



INSTRUCTIONS:

1. Apply fusible interfacing to listed pieces.
2. Mark and sew bust darts on fronts. Press bulk upwards. Serge upper edge of pocket, turn under and topstitch. Make buttonholes on pocket. Turn side and lower edges of pocket under and press. Topstitch pockets on fronts.
3. Sew back yoke to back. Serge and press seam upwards. Topstitch at 0.5 cm from seam.
4. Sew side and shoulder seams, serge and press towards back. Topstitch along side seams on fronts.
5. Sew plackets to center fronts, press seam towards plackets. Press under 1 cm on outer edge of placket. Fold and press placket along center. Baste folded edge to connecting seam.
6. Pin collars right sides together. Sew ends and outer edge of collar. Trim seam. Turn collar out, straighten and press. Topstitch at 0.5 cm along outer sides of collar. Pin collar stands right sides together, inserting collar between them, match notches and sew continuing the stitch along collar stand ends. Start and end stitch exactly at marked line of collar stand connecting seam. Turn collar out, straighten and press. Sew outer collar into neckline. Turn edge of inner collar under and topstitch into connecting seam.
7. Fold sleeve strap in half right sides together and sew long and one short sides. Trim seams, turn right side out and press. Sew strap to sleeve from inside as marked. Sew cuff to sleeve. Press seam towards cuff. Sew sleeve and cuff seam with one continuous stitch. Serge and press seam towards mark of strap. Turn cuff edge under and topstitch into cuff connecting seam. Topstitch at 0.5 cm from seam. Make a gathering stitch along sleeve cap to adjust ease. Sew sleeves into armholes matching marks and adjusting ease. Serge seams.
8. Serge hem of garment, turn under and topstitch.
9. Topstitch along front placket. Make buttonholes on right placket and sleeve straps. Sew buttons on left placket, pockets and sleeves.

TECHNICAL DRAWING:

