

Recommendations on fabric: natural/mixed well draping fabric suitable for blouses.

You will also need: fusible interfacing, 1 button, elastic of 0.6 - 0.9 cm wide.

Seam allowances: 1 cm for all seams, 2.0 cm hem, 3.0 cm for lower edge of sleeves.

Note on seam allowances:

- If the pattern has double contour the seam allowances are included. They are 1 cm unless specified otherwise.
- If the pattern has single contour, the seam allowances are NOT included and need to be added when laying out the pattern.

Note on length of fabric:

Attention! The amount of fabric needed for your pattern is not included. It will depend on the selected pattern size, the width, and design of the fabric you plan to use. First, print all the paper patterns and lay them out at the width of fabric you plan to use (usually from 90 to 150 cm). Measure how much fabric you will need. Don't forget to account for pieces that need to be cut multiple times and pieces that are cut on the fold.



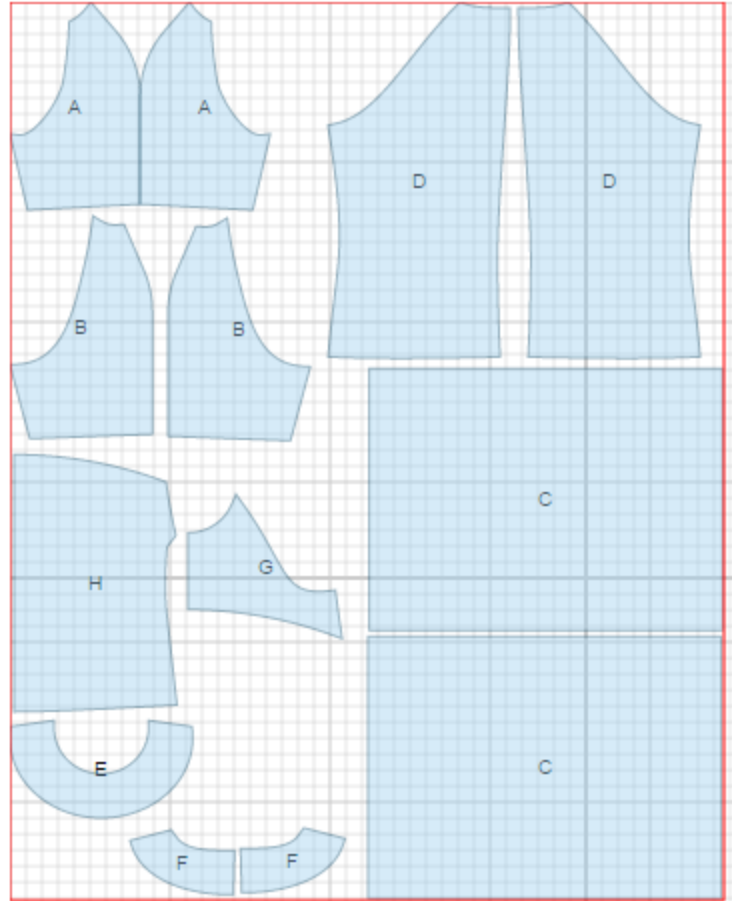
CUTTING:

Main fabric:

1. Front sleeve - cut 2 (A)
2. Back sleeve – cut 2 (B)
3. Lower sleeve - cut 2 (C)
4. Back - cut 2 (D)
5. Front neck facing - cut 1 (E)
6. Back neck facing - cut 2 (F)
7. Upper front - cut 1 (G)
8. Lower front - cut 1 (H)

Fusible interfacing:

1. Front neck facing - cut 1 (E)
2. Back neck facing - cut 2 (F)



INSTRUCTIONS:

1. Apply fusible interfacing to listed pieces.
2. Serge center back edges separately. Sew center back seam from mark down to hem. Press seam open pressing the slit.
3. Cut a bias tape of 3 cm wide and 5 cm long. Fold tape in half lengthwise right sides together and sew at 0.3 cm from fold. Trim seam, turn right side out, adjust loop length.
4. Sew bust darts. Press bulk upwards. Sew lower front to upper front, serge and press seam upwards.
5. Sew sleeves into front/back armhole. Serge and press seam towards front/back. Sew upper sleeve seam. Serge and press seam towards back.
6. Make a gathering stitch along sleeve cap and gather fullness. Sew lower sleeve to upper sleeve, serge and press seam upwards.
7. Sew side and sleeve seam with one continuous stitch. Serge and press seams towards back.
8. Sew shoulder seams of neck facings. Serge outer edge. Pin facing to blouse and sew neckline. Turn facing to inside, straighten and press. Sew the loop to the top edge of slit. Tack facing to shoulder seams and to center back seam. Topstitch along folds of back slit.
9. Serge lower edge of sleeve. Turn under at 1 cm, press, and turn again at 2 cm. Topstitch making a self-carrier. Leave a tiny opening in seam to thread elastic through the self-carrier then sew ends of elastic together. Sew opening closed.
10. Serge lower edge of blouse, turn under and topstitch. Sew button on back.

TECHNICAL DRAWING:

