

Recommendations on fabric: natural/mixed silk fabric.

You will also need: 1 button, elastic of 0.5-0.8 cm wide.

Seam allowances: 1 cm for all seams, 2.0 cm for garment hem and lower edge of sleeve.

**Note on seam allowances:**

- If the pattern has double contour the seam allowances are included. They are 1 cm unless specified otherwise.
- If the pattern has single contour, the seam allowances are NOT included and need to be added when laying out the pattern.

**Note on length of fabric:**

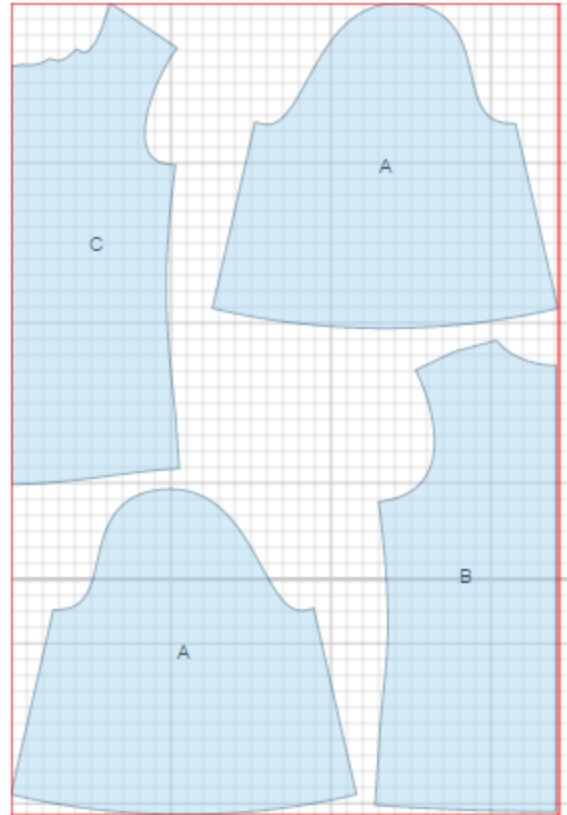
*Attention! The amount of fabric needed for your pattern is not included. It will depend on the selected pattern size, the width, and design of the fabric you plan to use. First, print all the paper patterns and lay them out at the width of fabric you plan to use (usually from 90 to 150 cm). Measure how much fabric you will need. Don't forget to account for pieces that need to be cut multiple times and pieces that are cut on the fold.*



## CUTTING:

### Main fabric:

1. Sleeve - cut 2 (A)
2. Back – cut 1 on fold (B)
3. Front - cut 1 on fold (C)



## INSTRUCTIONS:

1. Sew shoulder darts. Press bulk towards center. Make and fasten pleats on front neckline. Folds are directed towards center.
2. Cut a slit on back as marked. Cut a bias tape 4 cm wide from main fabric. Length is equal to double slit length + 4 cm. Fold bias tape in half lengthwise right side out and press. Fold outer edges to center and press. Finish the slit with bias tape.
3. Sew shoulder and side seams. Serge and press seams towards back.
4. Cut a bias tape of 3 cm wide and 5 cm long. Fold tape in half lengthwise right sides together and sew at 0.3 cm from fold. Trim seam, turn right side out, adjust loop length.
5. Cut a bias tape 4 cm wide from main fabric . Length is equal to neckline length + 4 cm. Fold bias tape in half lengthwise right side out and press. Pin bias tape to neckline from right side and sew. Clip into seam. Turn bias tape to inside and topstitch along the fold inserting the loop. Press.
6. Sew sleeve seam, serge and press seam towards back. Make a gathering stitch along sleeve cap and gather fullness. Serge lower edge of sleeve. Turn under and topstitch making a self-carrier. Leave a tiny opening in seam to thread elastic through the self-carrier then sew ends of elastic together. Sew opening closed.
7. Sew sleeves into armholes. Serge and press seams.
8. Serge lower edge of blouse, turn under and topstitch.
9. Sew button on back.

TECHNICAL DRAWING:

