

Recommendations on fabric: natural/mixed fabric suitable for blouses.

You will also need: fusible interfacing.

Seam allowances: 1 cm for all seams, 2.0 cm for center edge of left/right front.

Note on seam allowances:

- If the pattern has double contour the seam allowances are included. They are 1 cm unless specified otherwise.

- If the pattern has single contour, the seam allowances are NOT included and need to be added when laying out the pattern.

Note on length of fabric:

Attention! The amount of fabric needed for your pattern is not included. It will depend on the selected pattern size, the width, and design of the fabric you plan to use. First, print all the paper patterns and lay them out at the width of fabric you plan to use (usually from 90 to 150 cm). Measure how much fabric you will need. Don't forget to account for pieces that need to be cut multiple times and pieces that are cut on the fold.



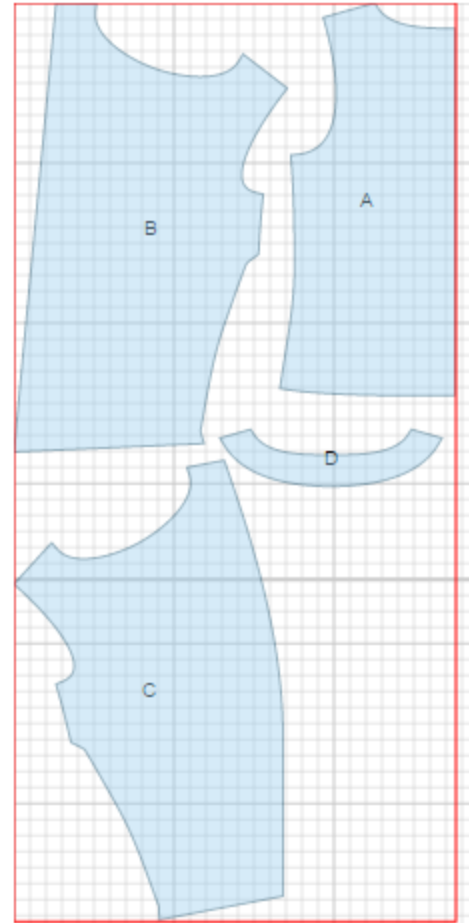
CUTTING:

Main fabric:

1. Back - cut 1 on fold (A)
2. Right front – cut 1 (B)
3. Left front - cut 1 (C)
4. Back neck facing - cut 1 (D)

Fusible interfacing:

1. Back neck facing - cut 1 (D)



INSTRUCTIONS:

1. Apply fusible interfacing to back neck facing.
2. Sew bust darts. Press bulk upwards.
3. Serge center edges of left and right fronts, turn under and topstitch. To face the front neckline, lay right front with its right side on wrong side of left front and sew neckline. Clip into seam on curves, turn right front to right side and press. Fasten fronts on shoulder edges.
4. Sew side seams. Serge and press seams towards back.
5. Serge inner edge of neck facing. Pin facing to back and sew neckline. Start and end stitch exactly at marked line of shoulder seam.
6. Sew shoulder seams placing front shoulder edge between back shoulder edge and facing. Serge and press seams. Turn facing to inside, straighten and press.
7. Cut a bias tape 4 cm wide from main fabric. Length is equal to armhole length + 4 cm. Fold bias tape in half lengthwise right side out and press. Pin bias tape to armhole from right side and sew. Turn bias tape to inside and topstitch along the fold. Press.
8. Serge lower edge of blouse, turn under and topstitch.

TECHNICAL DRAWING:

