

Recommendations on fabric: well draping natural or mixed dress fabric.

You will also need: fusible interfacing, invisible zipper, 5 buttons.

Seam allowances: hem – 2.0 cm, seam for closure on left front - 3 cm, other seams – 1.0 cm.

**Note on seam allowances:**

- If the pattern has double contour the seam allowances are included. They are 1 cm unless specified otherwise.
- If the pattern has single contour, the seam allowances are NOT included and need to be added when laying out the pattern.

**Note on length of fabric:**

*Attention! The amount of fabric needed for your pattern is not included. It will depend on the selected pattern size, the width, and design of the fabric you plan to use. First, print all the paper patterns and lay them out at the width of fabric you plan to use (usually from 90 to 150 cm). Measure how much fabric you will need. Don't forget to account for pieces that need to be cut multiple times and pieces that are cut on the fold.*



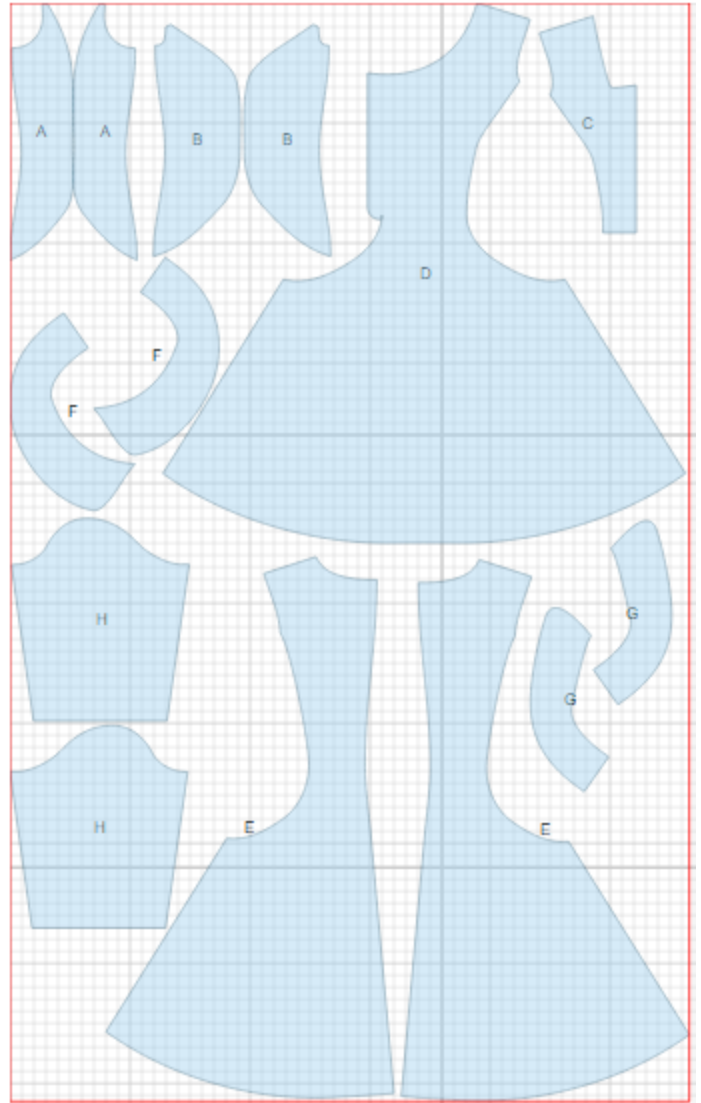
## CUTTING:

### Main fabric:

1. Side back - cut 2 (A)
2. Side front - cut 2 (B)
3. Left front - cut 1 (C)
4. Center front - cut 1 (D)
5. Center back- cut 2 (E)
6. Right collar - cut 2 (F)
7. Left collar - cut 2 (G)
8. Sleeve - cut 2 (H)

### Fusible interfacing:

1. Right collar - cut 1 (F)
2. Left collar - cut 1 (G)



---

**INSTRUCTIONS:**

1. Apply fusible interfacing to collars as well as to front closure edge.
2. Serge center back edges separately. Sew center back seam from mark down to hem. Press seam open pressing slit for zipper. Install zipper. Sew side backs to center back. Serge and press seams towards center.
3. Serge seam allowance of front closure. Turn under and press. Serge closure seam allowance of left front. Turn under, press and topstitch. Lay front on left front and fasten on lower edge of closure. Finish upper corners of closure. Turn left part back and topstitch along closure on center front.
4. Sew side fronts to center front. Serge and press seams towards center.
5. Sew shoulder and side seams. Serge and press towards back.
6. Place collars right sides together and sew outer edge. Clip into curves, turn collars out and press. Sew outer collars into neckline. Turn edges of inner collars under and topstitch into connecting seam.
6. Sew sleeve seam. Serge and press towards back. Make a gathering stitch along sleeve cap to adjust ease. Sew sleeve into armhole matching notches and adjusting ease, serge and press seam.
7. Serge hem of dress and lower edge of sleeve. Turn under, press and topstitch.
8. Make buttonholes on right front. Sew buttons on left front.

TECHNICAL DRAWING:

