

Recommendations on fabric: natural/mixed fabric suitable for blouses.

You will also need: fusible interfacing, 6 buttons.

Seam allowances: 1 cm for all seams, 1.5 cm for garment hem and lower edge of sleeve.

**Note on seam allowances:**

- If the pattern has double contour the seam allowances are included. They are 1 cm unless specified otherwise.
- If the pattern has single contour, the seam allowances are NOT included and need to be added when laying out the pattern.

**Note on length of fabric:**

*Attention! The amount of fabric needed for your pattern is not included. It will depend on the selected pattern size, the width, and design of the fabric you plan to use. First, print all the paper patterns and lay them out at the width of fabric you plan to use (usually from 90 to 150 cm). Measure how much fabric you will need. Don't forget to account for pieces that need to be cut multiple times and pieces that are cut on the fold.*



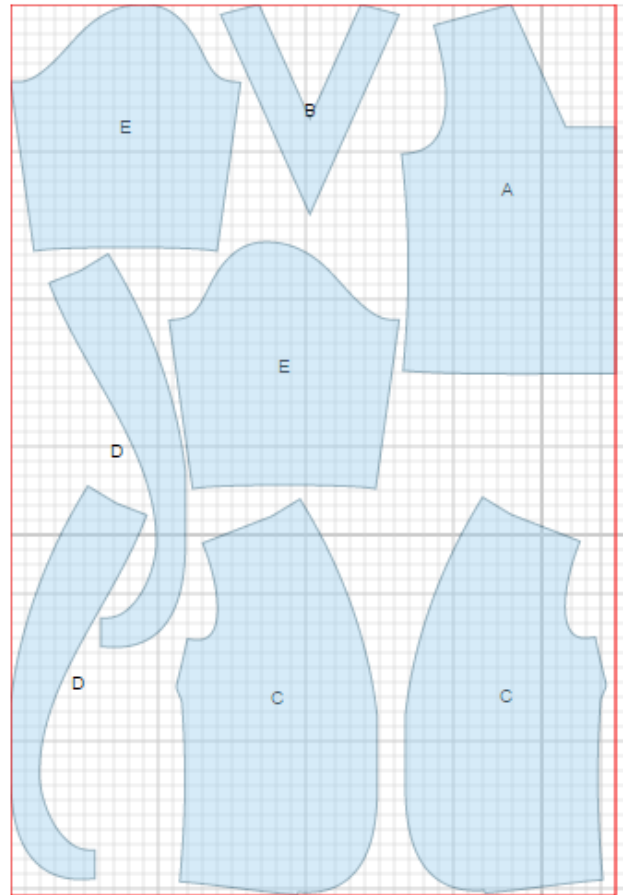
## CUTTING:

### Main fabric:

1. Back - cut 1 on fold (A)
2. Back neck facing – cut 1 (B)
3. Front - cut 2 (C)
4. Front facing - cut 2 (D)
5. Sleeve - cut 2 (E)

### Fusible interfacing:

1. Front facing - cut 2 (D)
2. Back neck facing – cut 1 (B)



---

**INSTRUCTIONS:**

1. Apply interfacing to listed pieces.
2. Sew bust darts on front, press bulk upwards.
3. Make and fasten counter pleat on back.
4. Serge outer edges of front facings. Pin facings to fronts right sides together and sew. Clip seams on curves, turn right side out and press. Press collar along marked fold line, fasten on shoulder edge.
5. Sew side seams. Serge and press seams towards back.
6. Serge outer edge of back neck facing. Pin facing to neckline right sides together and sew neckline. Start and end stitch exactly at marked line of shoulder seam.
7. Sew shoulder seams placing front shoulder edge between back shoulder edge and facing. Serge and press seams. Turn facing to inside, straighten and press. Tack upper edge of back pleat to back neck facing.
8. Sew sleeve seam, serge and press seam towards back. Make a gathering stitch along sleeve cap to adjust ease. Sew sleeves into armholes matching notches and adjusting ease. Serge and press seams.
9. Serge lower edge of blouse and sleeves, turn under and topstitch.
10. Lay right front over left front matching center lines, and topstitch along front edge at 0.1 cm. Tack left front to right front from inside in several points.
11. Sew buttons on back pleat and on right front.

TECHNICAL DRAWING:

