

Recommendations on fabric: natural/mixed fabric suitable for blouses.

You will also need: fusible interfacing, 1 button.

Seam allowances: 1 cm for all seams, 2 cm for garment hem and lower edge of sleeve.

**Note on seam allowances:**

- If the pattern has double contour the seam allowances are included. They are 1 cm unless specified otherwise.

- If the pattern has single contour, the seam allowances are NOT included and need to be added when laying out the pattern.

**Note on length of fabric:**

*Attention! The amount of fabric needed for your pattern is not included. It will depend on the selected pattern size, the width, and design of the fabric you plan to use. First, print all the paper patterns and lay them out at the width of fabric you plan to use (usually from 90 to 150 cm). Measure how much fabric you will need. Don't forget to account for pieces that need to be cut multiple times and pieces that are cut on the fold.*



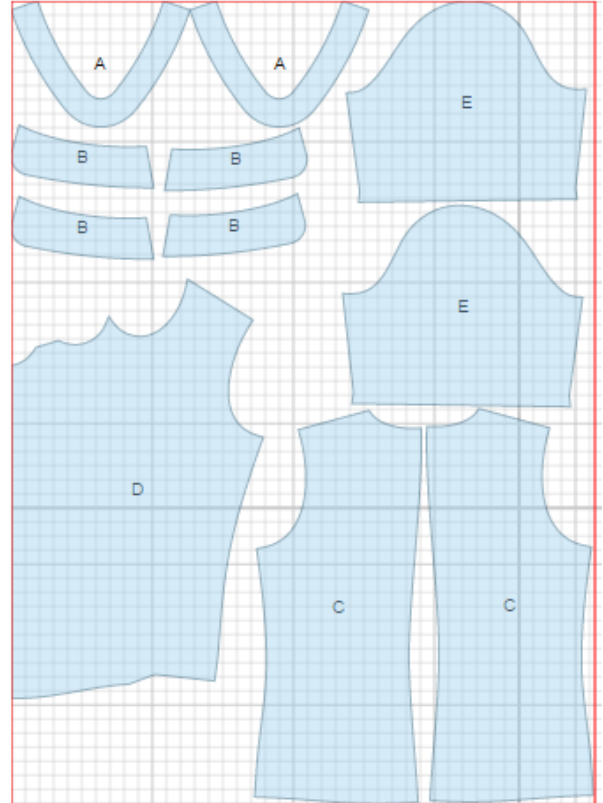
**CUTTING:**

Main fabric:

1. Collar stand - cut 2 (A)
2. Collar – cut 4 (B)
3. Back - cut 2 (C)
4. Front - cut 1 (D)
5. Sleeve - cut 2 (E)

Fusible interfacing:

1. Collar stand - cut 1 (A)
2. Collar – cut 2 (B)



---

**INSTRUCTIONS:**

1. Apply interfacing to listed pieces.
2. Serge center back edges. Sew center back seam from mark down to hem. Press seam open along the slit. Topstitch along slit at 0.2 cm.
3. Sew darts on front, press bulk towards center. Make and fasten pleats on front.
4. Sew side and shoulder seams. Press seams towards back.
5. Cut a bias tape 3 cm wide and 5 cm long. Fold bias tape in half lengthwise right sides together and sew at 0.3 cm from the fold. Trim seam and turn piece right side out. Adjust the loop length.
6. Place collars pairwise right sides together and sew outer edge and corners inserting the loop. Pin collar stands right sides with collar sandwiched in between and sew. Trim seams, turn collar stand right side out and press. Sew outer collar stand into front neckline, press seam towards collar. Turn inner collar stand edge under and topstitch into neckline connecting seam.
7. Sew sleeve seam, serge and press seam towards back. Make a gathering stitch along sleeve cap to adjust ease. Sew sleeves into armholes matching notches and adjusting ease. Serge and press seams.
8. Serge lower edge of blouse and sleeves, turn under and topstitch.
9. Sew on a button.

TECHNICAL DRAWING:

