

Recommendations on fabric: light-weight natural/mixed suiting fabric; silk companion fabric.

You will also need: fusible interfacing, lining; shoulder pads, 1 hook and eyelet.

Seam allowances: 1 cm for all seams, 3 cm for garment hem and lower edge of sleeve.

Note on seam allowances:

- If the pattern has double contour the seam allowances are included. They are 1 cm unless specified otherwise.
- If the pattern has single contour, the seam allowances are NOT included and need to be added when laying out the pattern.

Note on length of fabric:

Attention! The amount of fabric needed for your pattern is not included. It will depend on the selected pattern size, the width, and design of the fabric you plan to use. First, print all the paper patterns and lay them out at the width of fabric you plan to use (usually from 90 to 150 cm). Measure how much fabric you will need. Don't forget to account for pieces that need to be cut multiple times and pieces that are cut on the fold.



CUTTING:

Main fabric:

1. Back neck facing - cut 1 (A)
2. Side back – cut 2 (B)
3. Center back - cut 2 (C)
4. Front - cut 2 (D)
5. Front facing - cut 2 (E)
6. Upper sleeve – cut 2 (F)
7. Lower sleeve – cut 2 (G)

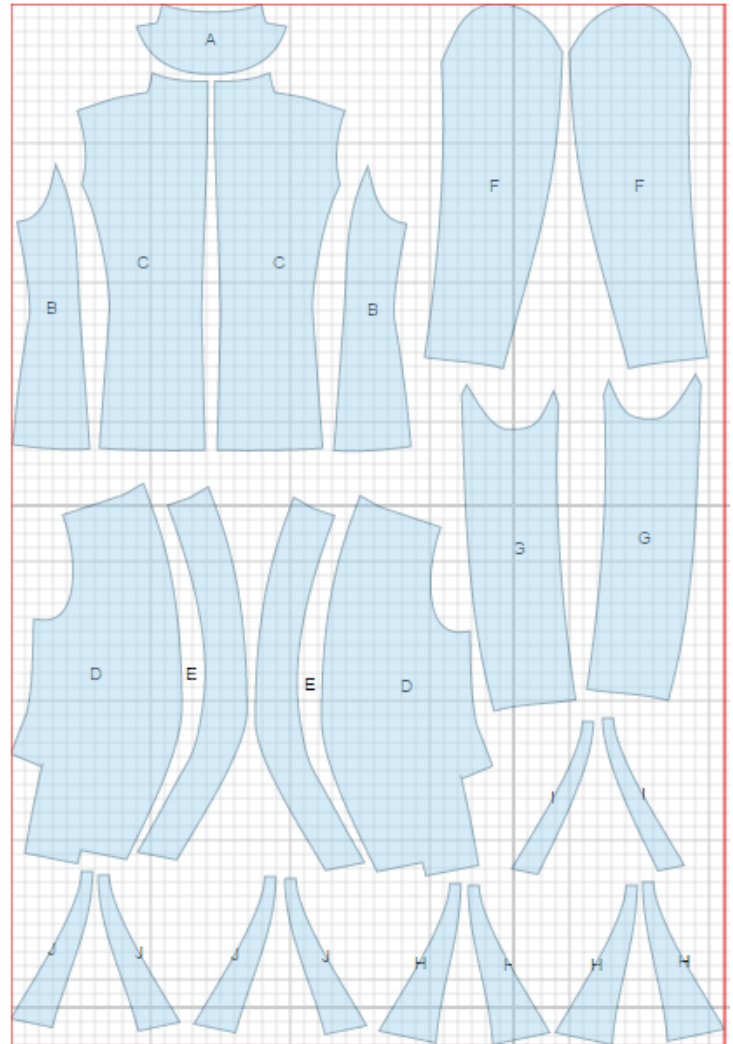
Silk:

1. Lower front band piece_1 - cut 4 (H)
2. Lower front band lining - cut 2 (I)
3. Lower front band piece_2 - cut 4 (J)

Lining:

1. Front – cut 2 (D)
2. Center back - cut 2 (C)
3. Side back - cut 2 (B)
4. Upper sleeve – cut 2 (F)
5. Lower sleeve – cut 2 (G)

*ATTENTION: Lining is cut using main fabric patterns excluding the width of front facing and back neck facing. Add a pleat on lining.



Fusible interfacing: front, back neck facing, front facing, armhole section of of center back , seam allowance of lower edge of center/side backs, side back armhole, seam allowance of lower edge of sleeve.

INSTRUCTIONS:

1. Apply interfacing to listed pieces.
2. Sew shoulder darts on back. Press bulk towards center. Sew side backs to center backs. Press seams towards center. Sew center back seam, press seam open.
3. Cut front between lines of side piece connection. Sew dart on front, trim and press open. Sew side cut piece to front. Press seam downwards.
4. Place lower front band pieces_1 right sides together and sew outer and lower edges. Trim seam, turn right side out, straighten and press. Treat the lower front band pieces_2 the same way. Place pieces together, align on inner edge and pin. Sew lower front band lining piece to front from mark to hem. Clip seam on curve, turn lining to wrong side and press. Sew decoration pieces to inner edge of lining.
5. Sew side and shoulder seams. Press seams open.
6. Sew and press open elbow sleeve seam. Sew and press open front sleeve seam. Sew sleeve into armhole matching notches and adjusting ease. Sew shoulder pads.
7. Sew and press open shoulder seams of back neck facing and front facings.
8. Pin facing to front right sides together and sew along front edge and neckline inserting a hook and eye. Sew lower edges of front facings to decoration pieces connecting seam. Press neckline and front bands.
9. Sew lining pieces together leaving an opening in right front seam of sleeve for turning garment right side out. Press.
10. Sew lining to front facings, back neck facing and lower edge of jacket matching seams on lining and garment. Sew lining to lower edges of sleeves.
11. Turn jacket right side out through the opening in sleeve. Sew opening in sleeve closed.

TECHNICAL DRAWING:

