

Recommendations on fabric: natural or mixed blouse fabric.

You will also need: fusible interfacing, 4 buttons.

Seam allowances: all seams – 1.0 cm.

**Note on seam allowances:**

- If the pattern has double contour the seam allowances are included. They are 1 cm unless specified otherwise.
- If the pattern has single contour, the seam allowances are NOT included and need to be added when laying out the pattern.

**Note on length of fabric:**

*Attention! The amount of fabric needed for your pattern is not included. It will depend on the selected pattern size, the width, and design of the fabric you plan to use. First, print all the paper patterns and lay them out at the width of fabric you plan to use (usually from 90 to 150 cm). Measure how much fabric you will need. Don't forget to account for pieces that need to be cut multiple times and pieces that are cut on the fold.*



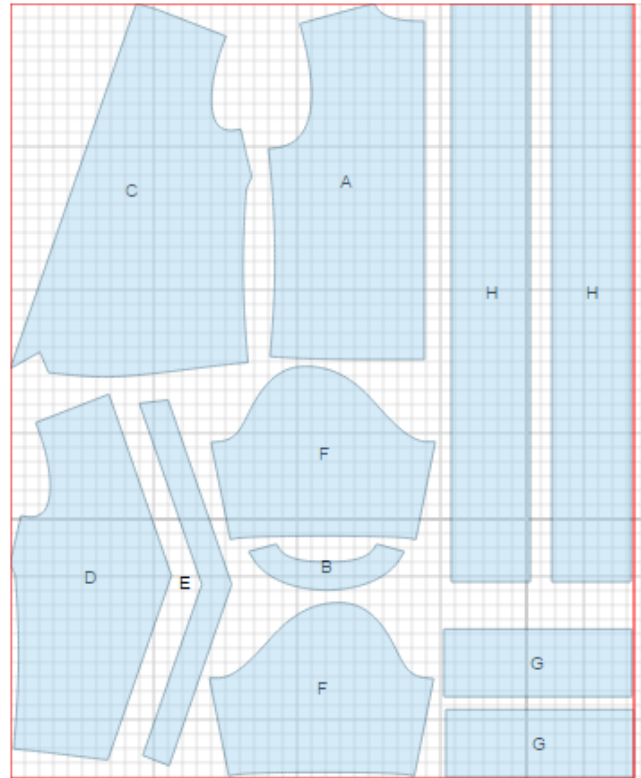
## CUTTING:

### Main fabric:

1. Back - cut 1 on fold (A)
2. Back neck facing - cut 1 (B)
3. Right front - cut 1 (C)
4. Left front - cut 1 (D)
5. Left front facing - cut 1 (E)
6. Sleeve - cut 2 (F)
7. Cuff - cut 2 (G)
8. Waistband - cut 2 (H)

### Fusible interfacing:

1. Back neck facing - cut 1 (B)
2. Left front facing - cut 1 (E)
3. Cuff - cut 2 (G)



---

**INSTRUCTIONS:**

1. Apply fusible interfacing to listed pieces and along front edge of right front.
2. Sew bust darts on front, press bulk upwards. Sew waist darts on back, press bulk towards center.
3. Serge center edge of right front. Fold edge to right side and sew lower corner. Turn piece out and press.
4. Serge inner edge of left front facing. Pin facing to front right sides together and sew front edge. Turn right side out and press.
5. Sew side seams. Serge and press towards back.
6. Serge outer edge of back neck facing. Pin facing to back right sides together and sew. Start and end stitch exactly at marked line of shoulder seam. Clip seam on curves.
7. Sew shoulder seams placing front shoulder edge between back shoulder edge and facing. Serge and press seams. Turn back neck facing to inside, straighten and press.
8. Sew sleeve seam, serge and press towards back. Make a gathering stitch along sleeve cap to adjust ease. Sew sleeves to armholes matching notches and adjusting ease. Serge and press seams.
9. Sew cuff into ring, press seam open. Press cuff in half lengthwise right side out. Sew cuff to lower edge of sleeve from wrong side. Serge seam, turn cuff to right side and press.
10. Sew waistband pieces, press seam open. Pin waistband to lower edge of blouse and sew (waistband seam should be at back center). Sew ends of waistband, trim seams in corners, turn right side out, straighten and press. Turn unfinished edge of waistband under and topstitch into waistband connecting seam.
11. Make buttonholes on right front. Sew buttons on left front.

TECHNICAL DRAWING:

