

Recommendations on fabric: natural or mixed suiting fabric.

You will also need: fusible interfacing, lining.

Seam allowances: all seams 1 cm. Seam allowance for hem - 2.5 cm, upper edge of pocket - 4 cm.

Note on seam allowances:

- If the pattern has double contour the seam allowances are included. They are 1 cm unless specified otherwise.
- If the pattern has single contour, the seam allowances are NOT included and need to be added when laying out the pattern.

Note on length of fabric:

Attention! The amount of fabric needed for your pattern is not included. It will depend on the selected pattern size, the width, and design of the fabric you plan to use. First, print all the paper patterns and lay them out at the width of fabric you plan to use (usually from 90 to 150 cm). Measure how much fabric you will need. Don't forget to account for pieces that need to be cut multiple times and pieces that are cut on the fold.



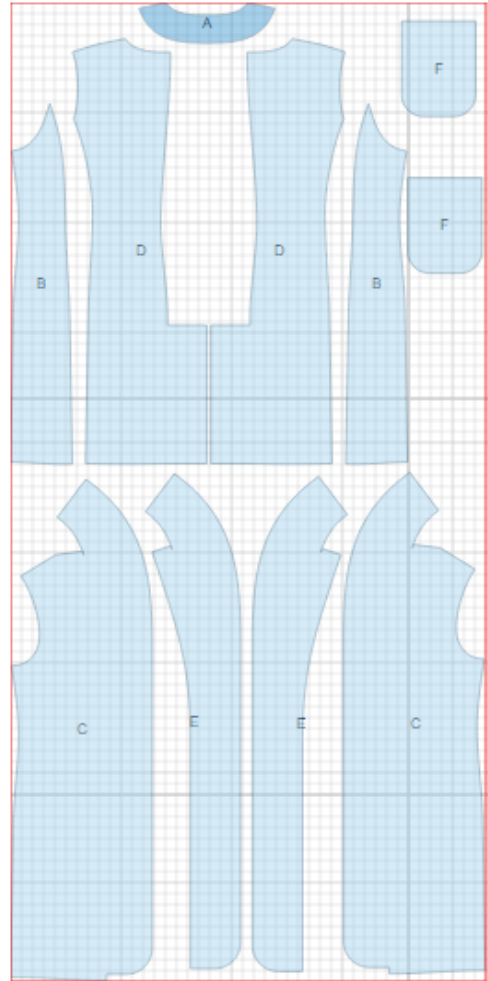
CUTTING:

Main fabric:

1. Back neck facing - cut 1 (A)
2. Side back - cut 2 (B)
3. Front - cut 2 (C)
4. Center back - cut 2 (D)
5. Front facing - cut 2 (E)
6. Pocket - cut 2 (F)

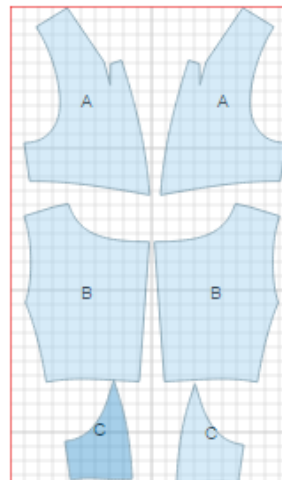
Fusible interfacing:

1. Front facing - cut 2 (E)
2. Back neck facing - cut 1 (A)



Lining:

1. Front - cut 2 (A)
2. Center back - cut 2 (B)
3. Side back - cut 2 (C)



INSTRUCTIONS:

1. Apply fusible interfacing to listed pieces.
2. Sew shoulder darts on fronts. Press bulk towards center.
3. Serge pocket edges. Turn upper edge under and topstitch. Turn side and lower edges under and press. Topstitch pocket on front according to marking.
4. Sew shoulder darts on back. Press bulk towards center. On left lower back, along vertical vent edge, cut off 5 cm. Apply fusible interfacing to wrong side of the vent on both back pieces. On right side mark center seam line (vent fold-line). Press left side along vent fold line. On right side, press seam allowance to wrong side of vent (6 cm). Match backs on center seam and fasten on upper edge of vent. Serge center back seam separately on each side. Serge vent seam allowances. Sew center back seam to vent corner. Trim corner of vent seam allowance on right side. Press center seam open, press vent allowances and fasten them on right side with machine stitch.
5. Sew side backs to center backs. Serge and press seams towards center.
6. Sew side and shoulder seams. Press seams open. Sew shawl-collar seam and press open. Trim allowance near shoulder seam and sew collar into neckline.
7. Sew shoulder seams of back neck facings and front facings. Press seams open. Sew shawl-collar seam and press open. Trim allowance near shoulder seam and sew collar into neckline.
8. Serge lower edge of coat.
9. Serge inner edge of front facing from mark to hem. Pin front facing to front right sides together and sew along front edge and neckline. Turn front bands and facing right side out, straighten seams.
10. Sew lining pieces together. Turn lower edge under and topstitch.
11. Sew lining to inner edges of facings. Finish armhole in two steps: first front armhole, then back armhole.
12. Turn lower edge of coat under and slipstitch.

TECHNICAL DRAWING:

