

Recommendations on fabric: low stretch-knit, natural or mixed fabric or dress fabric with lycra.

You will also need: 1 button.

Seam allowances: on hem - 2 cm, lower edge of sleeve - 1.2 cm, other seams – 0.8 cm.

**Note on seam allowances:**

- If the pattern has double contour the seam allowances are included. They are 1 cm unless specified otherwise.
- If the pattern has single contour, the seam allowances are NOT included and need to be added when laying out the pattern.

**Note on length of fabric:**

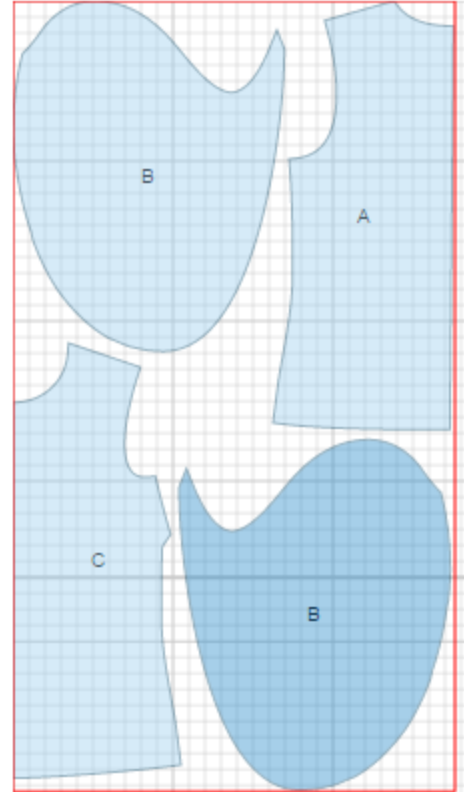
*Attention! The amount of fabric needed for your pattern is not included. It will depend on the selected pattern size, the width, and design of the fabric you plan to use. First, print all the paper patterns and lay them out at the width of fabric you plan to use (usually from 90 to 150 cm). Measure how much fabric you will need. Don't forget to account for pieces that need to be cut multiple times and pieces that are cut on the fold.*



## CUTTING:

### Main fabric 1:

1. Back - cut 1 on fold (A)
2. Sleeve - cut 2 (B)
3. Front - cut 1 on fold (C)



**Advice:** Knit fabric pieces are sewn together with special elastic or narrow zig-zag stitch. Seam allowance on hem is stitched with twin needles to save stretchiness. Pieces can also be sewn together with 3 or 4 – thread serger. When serging, cut seam allowances to 0.6 – 0.8 cm.

---

**INSTRUCTIONS:**

1. Sew darts on front, press bulk upwards.
2. Cut a slit on back as marked. Cut a bias tape of 4 cm wide. Length is equal to double length of slit + 4 cm. Fold bias tape in half lengthwise right side out and press. Press outer edges towards center. Finish slit with bias tape.
3. Sew side and shoulder seams. Serge and press towards back.
4. For closure loop: Cut a bias tape of 3 cm wide and 5 cm long. Fold bias tape in half lengthwise right sides together and sew at 0.3 cm from fold. Trim seam and turn tape right side out. Adjust the loop length.
5. For neckline finish: Cut a bias tape of 4 cm wide. Length is equal to the length of neckline + 5 cm. Fold bias tape in half lengthwise right side out and press. Pin bias tape to neckline from right side and sew. Trim seam. Turn bias tape to inside and topstitch along the fold onto main piece inserting the loop. Press.
6. Finish lower and front edges of sleeve with narrow rolled seam.
7. Pin sleeve to armhole (back part is under front part). Sew in sleeves matching notches. Serge and press seam.
8. Serge lower edge of blouse, turn under, press and topstitch.
9. Sew a button on back.

TECHNICAL DRAWING:

