

Recommendations on fabric: natural or mixed well draping dress fabric.

You will also need: fusible interfacing, invisible zipper.

Seam allowances: all seams – 1.0 cm.

Note on seam allowances:

- If the pattern has double contour the seam allowances are included. They are 1 cm unless specified otherwise.

- If the pattern has single contour, the seam allowances are NOT included and need to be added when laying out the pattern.

Note on length of fabric:

Attention! The amount of fabric needed for your pattern is not included. It will depend on the selected pattern size, the width, and design of the fabric you plan to use. First, print all the paper patterns and lay them out at the width of fabric you plan to use (usually from 90 to 150 cm). Measure how much fabric you will need. Don't forget to account for pieces that need to be cut multiple times and pieces that are cut on the fold.



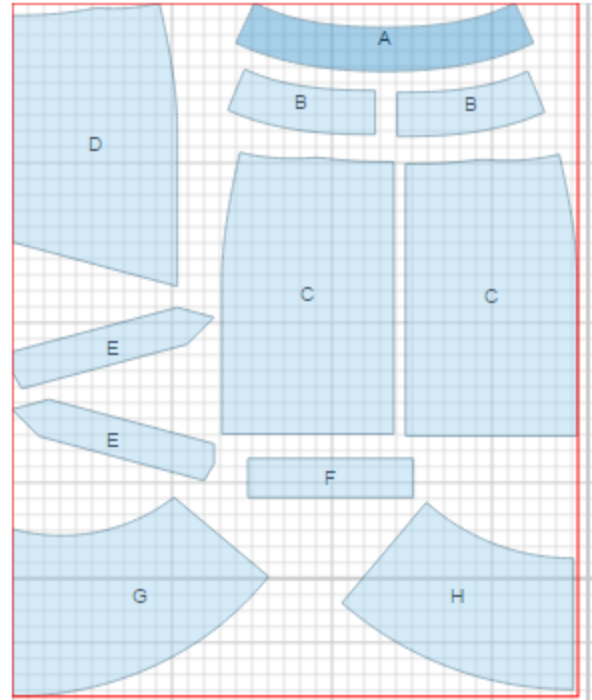
CUTTING:

Main fabric:

1. Front facing - cut 1 (A)
2. Back facing - cut 2 (B)
3. Upper back - cut 2 (C)
4. Upper front - cut 1 on fold (D)
5. Front placket - cut 2 (E)
6. Back placket - cut 1 (F)
7. Lower front - cut 1 on fold (G)
8. Lower back - cut 1 on fold (H)

Fusible interfacing:

1. Front facing - cut 1 (A)
2. Back facing - cut 2 (B)



INSTRUCTIONS:

1. Apply fusible interfacing to facings.
2. Sew darts on back and front pieces, press bulk towards center.
3. Serge separately center back edges. Sew center back seam from zipper mark down, press seam open. Install zipper.
4. Press back placket in half lengthwise right side out. Baste placket to lower back on upper edge. Sew upper and lower backs together with placket sandwiched in between . Serge and press seam upwards.
5. Press front plackets in half lengthwise right side out. Baste plackets to lower front along upper edge (with right placket overlapping left one). Sew upper and lower fronts together with plackets sandwiched in between. Serge and press seam upwards.
6. Sew side seams, serge and press seam towards back.
7. Sew side seams of facings and press open. Serge lower edge. Pin facing to skirt right sides together and sew upper edge. Understitch allowances on facing at 0.2 cm from seam. Turn facing to inside and press. Tack seam allowances to zipper tape.
8. Serge lower edge of skirt, fold to wrong side, press, and topstitch.

TECHNICAL DRAWING:

