

Recommendations on fabric: natural or mixed dress fabric, lace.

You will also need: fusible interfacing, invisible zipper.

Seam allowances: hem – 2.0 cm, along back vent - 6.0 cm, other seams – 1.0 cm.

Note on seam allowances:

- If the pattern has double contour the seam allowances are included. They are 1 cm unless specified otherwise.
- If the pattern has single contour, the seam allowances are NOT included and need to be added when laying out the pattern.

Note on length of fabric:

Attention! The amount of fabric needed for your pattern is not included. It will depend on the selected pattern size, the width, and design of the fabric you plan to use. First, print all the paper patterns and lay them out at the width of fabric you plan to use (usually from 90 to 150 cm). Measure how much fabric you will need. Don't forget to account for pieces that need to be cut multiple times and pieces that are cut on the fold.



CUTTING:

Main fabric:

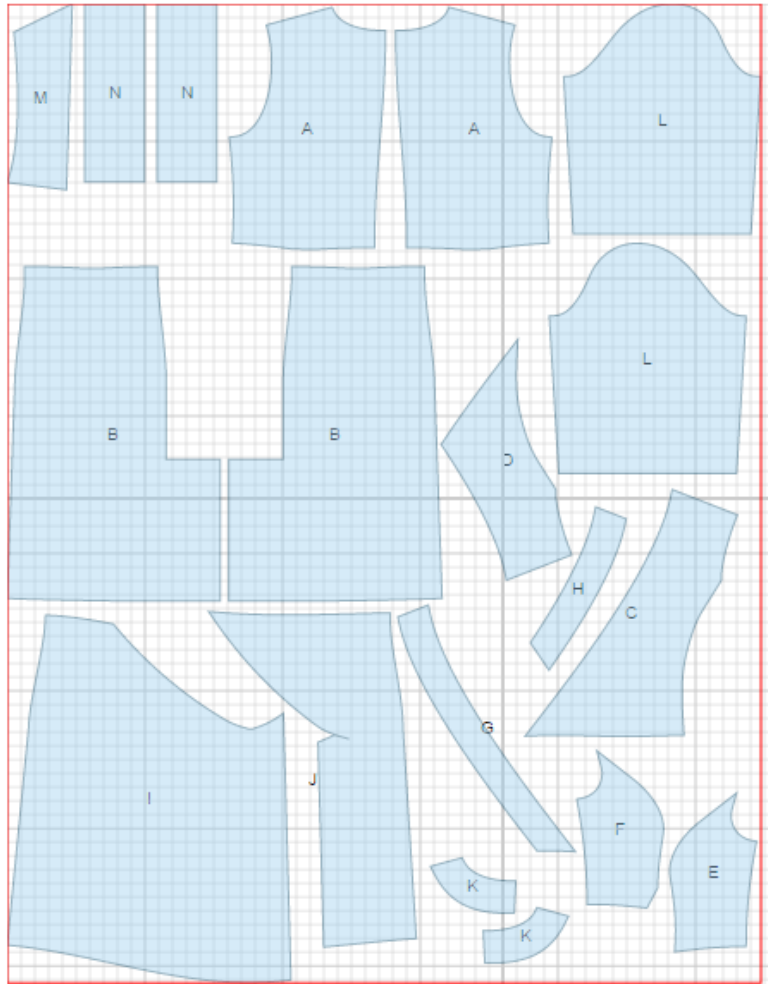
1. Upper back - cut 2 (A)
2. Lower back - cut 2 (B)
3. Center upper right front - cut 1 (C)
4. Center upper left front- cut 1 (D)
5. Side upper right front - cut 1 (E)
6. Side upper left front - cut 1 (F)
7. Front right facing - cut 1 (G)
8. Front left facing- cut 1 (H)
9. Right lower front - cut 1 (I)
10. Left lower front - cut 1 (J)
11. Back neck facing - cut 2 (K)
12. Sleeve - cut 2 (L)

Lace:

1. Front trim - cut 1 (M)
2. Cuff - cut 2 (N)

Fusible interfacing:

1. Front right facing - cut 1 (G)
2. Front left facing- cut 1 (H)
3. Back neck facing - cut 2 (K)



INSTRUCTIONS:

1. Apply fusible interfacing to listed pieces.
2. Sew darts on upper and lower backs, press bulk towards center.
3. Sew lower back to upper back, serge and press seam upwards.
4. On left lower back, along vertical vent edge, cut off 5 cm. Apply fusible interfacing to wrong side of the vent on both back pieces. On right side mark center seam line (vent fold-line). Press left side along vent fold

line. On right side, press seam allowance to wrong side of vent (6 cm). Match backs on center seam and fasten on upper edge of vent. Serge center back seam separately on each side. Serge vent seam allowances. Sew center back seam from zipper mark to vent corner. Trim corner of vent seam allowance on right side. Press center seam open, press vent allowances and fasten them on right side with machine stitch. Install zipper.

5. Pin front trim to right upper front. Sew side upper fronts to center fronts, serge and press seams towards center.

6. Serge outer edge of left facing. Pin facing to left upper front right sides together and sew neckline. Turn right side out, straighten and press.

7. Pin facing to right upper front right sides together and sew neckline. Turn right side out, straighten and press. Place right upper front on left one and sew left upper front to right facing. Serge and press seam.

8. Apply fusible interfacing to vent seam allowance on right lower back. Press vent to wrong side along marked line. Apply fusible interfacing to corner of left lower back, trim leaving 0.1 cm to corner. Serge vent seam allowance, press under and topstitch.

9. Sew lower right front/ left front making stitch to nought to corner. Serge and press seam upwards. Fasten vent seam allowances in upper part from wrong side.

10. Sew lower front to upper front, serge and press seam upwards.

11. Serge outer edge of back neck facing. Pin facing to neckline and sew. Start and end stitch exactly at marked line of shoulder seam. Clip seam on curves.

12. Sew shoulder seams placing shoulder edge of front piece between back and facing. Serge and press seams. Turn facing to inside, straighten and press. Tack back edges of facing to zipper tape.

13. Sew side seams. Serge and press seams towards back.

14. Sew sleeve seam. Serge and press seam towards back. Make a gathering stitch along sleeve cap to adjust ease. Sew sleeves into armholes matching notches and adjusting ease. Serge and press seams.

15. Sew lace cuff into ring, press seam open. Pin cuff to sleeve right sides together and sew. Serge seam. Turn cuff down and press.

16. Serge lower edge of dress, fold to wrong side, press, and slipstitch.

TECHNICAL DRAWING:

