

Recommendations on fabric: low stretch-knit fabric or, natural or mixed dress fabric with lycra.

You will also need: fusible interfacing, invisible zipper, two 12 cm zippers for sleeves.

Seam allowances: hems – 2.0 cm, other seams – 1.0 cm.

Note on seam allowances:

- If the pattern has double contour the seam allowances are included. They are 1 cm unless specified otherwise.

- If the pattern has single contour, the seam allowances are NOT included and need to be added when laying out the pattern.

Note on length of fabric:

Attention! The amount of fabric needed for your pattern is not included. It will depend on the selected pattern size, the width, and design of the fabric you plan to use. First, print all the paper patterns and lay them out at the width of fabric you plan to use (usually from 90 to 150 cm). Measure how much fabric you will need. Don't forget to account for pieces that need to be cut multiple times and pieces that are cut on the fold.



CUTTING:

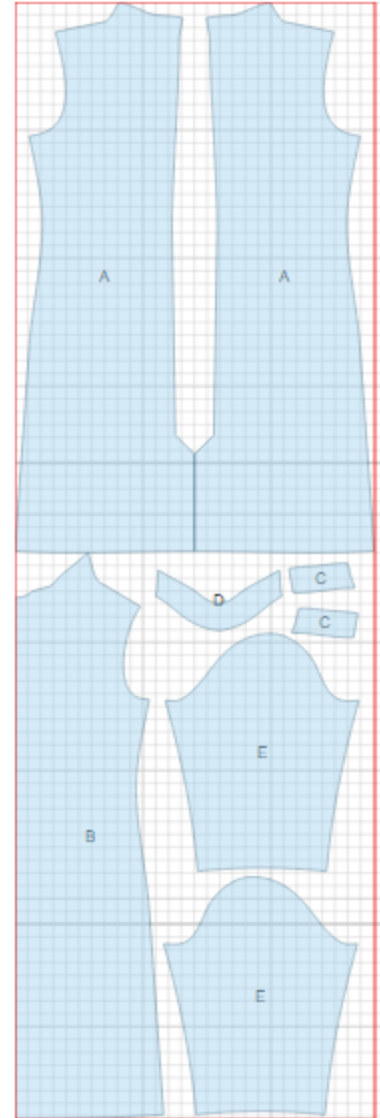
Main fabric:

1. Back - cut 2 (A)
2. Front - cut 1 on fold (B)
3. Back neck facing - cut 2 (C)
4. Front neck facing - cut 1 (D)
5. Sleeve - cut 2 (E)

Fusible interfacing:

1. Back neck facing - cut 2 (C)
2. Front neck facing - cut 1 (D)

Advice: Knit fabric pieces are sewn together with special elastic or narrow zig-zag stitch. Seam allowance on hem is stitched with twin needles to save stretchiness. Pieces can also be sewn together with 3 or thread serger. When serging, cut seam allowances to 0.6 – 0.8 cm.



4 –

INSTRUCTIONS:

1. Apply fusible interfacing to facings.
2. Sew darts on front and backs, press bulk towards center.
3. Apply fusible interfacing to wrong side of vents on both back pieces. Serge center back edges separately, serge vent seam allowances. Sew center back seam from zipper-mark down to vent corner. Trim vent corner on right piece. Press center seam open. Press vent seam allowances and fasten them with machine stitch. Install zipper.
4. Sew shoulder and side seams. Serge and press towards back.
5. Sew shoulder seams of facings, serge outer edge. Pin facing to dress right sides together and sew neckline. Clip seam on curves. Turn facing to inside and press. Tack facing to shoulder seams and zipper tape.
6. Serge sleeve edges separately. Sew sleeve seam from armhole to zipper mark. Press seam open. Sew in zipper.
7. Sew sleeves into armholes matching notches and adjusting ease on sleeve cap. Serge and press seams.
8. Serge hem of dress and lower edge of sleeve. Turn under, press and topstitch.

TECHNICAL DRAWING:

