

Recommendations on fabric: natural or mixed well draping fabric.

You will also need: fusible interfacing, invisible zipper, one button.

Seam allowances: hem – 1.5 cm, other seams – 1.0 cm.

Note on seam allowances:

- If the pattern has double contour the seam allowances are included. They are 1 cm unless specified otherwise.
- If the pattern has single contour, the seam allowances are NOT included and need to be added when laying out the pattern.

Note on length of fabric:

Attention! The amount of fabric needed for your pattern is not included. It will depend on the selected pattern size, the width, and design of the fabric you plan to use. First, print all the paper patterns and lay them out at the width of fabric you plan to use (usually from 90 to 150 cm). Measure how much fabric you will need. Don't forget to account for pieces that need to be cut multiple times and pieces that are cut on the fold.



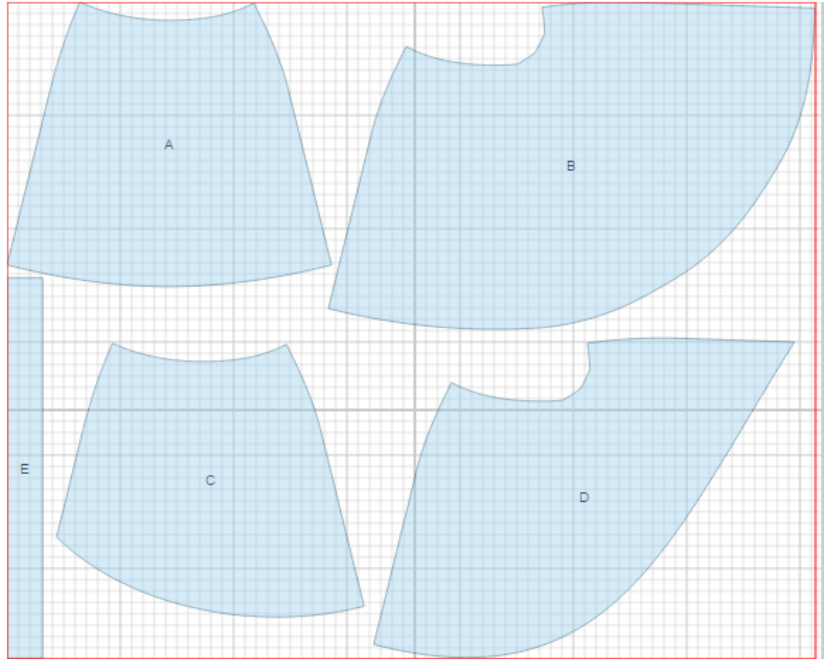
CUTTING:

Main fabric:

1. Inner back - cut 1 (A)
2. Inner front - cut 1 (B)
3. Outer back - cut 1 (C)
4. Outer front - cut 1 (D)
5. Waistband - cut 1 (E)

Fusible interfacing:

1. Waistband - cut 1 (E)



INSTRUCTIONS:

1. Apply fusible interfacing to waistband.
2. Sew right side seam of outer skirt. Serge and press towards back. Sew right side seam of inner skirt. Serge and press towards back.
3. Serge separately left side edges of inner and outer skirts. Sew left side seam of outer skirt from zipper mark down to hem. Press seam open. Sew left side seam of inner skirt from zipper mark down to hem. Press seam open. Sew zipper in outer skirt. Insert inner skirt into outer skirt, pin on upper edge. Sew seam allowances for zipper of inner skirt to zipper tape.
4. Sew outer side of waistband to upper edge of skirt. Sew ends of waistband, trim corners, turn waistband right side out. Turn edge of inner part of waistband under and topstitch into connecting seam. Press waistband.
5. Serge lower edge of inner skirt. Turn under, press and topstitch. Serge lower edge of outer skirt. Turn under, press and topstitch.
6. Mark and make buttonhole on waistband. Sew on a button.

TECHNICAL DRAWING:

