

Recommendations on fabric: natural or mixed well-draping dress fabric.

You will also need: invisible zipper.

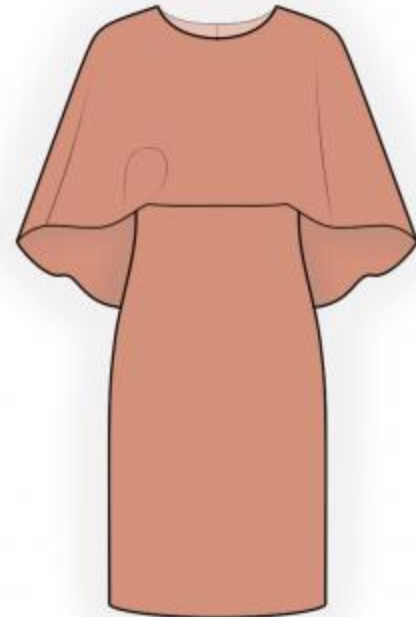
Seam allowances: hem of dress - 2.5 cm, lower edge of cape – 1.5 cm, other seams – 1.0 cm.

**Note on seam allowances:**

- If the pattern has double contour the seam allowances are included. They are 1 cm unless specified otherwise.
- If the pattern has single contour, the seam allowances are NOT included and need to be added when laying out the pattern.

**Note on length of fabric:**

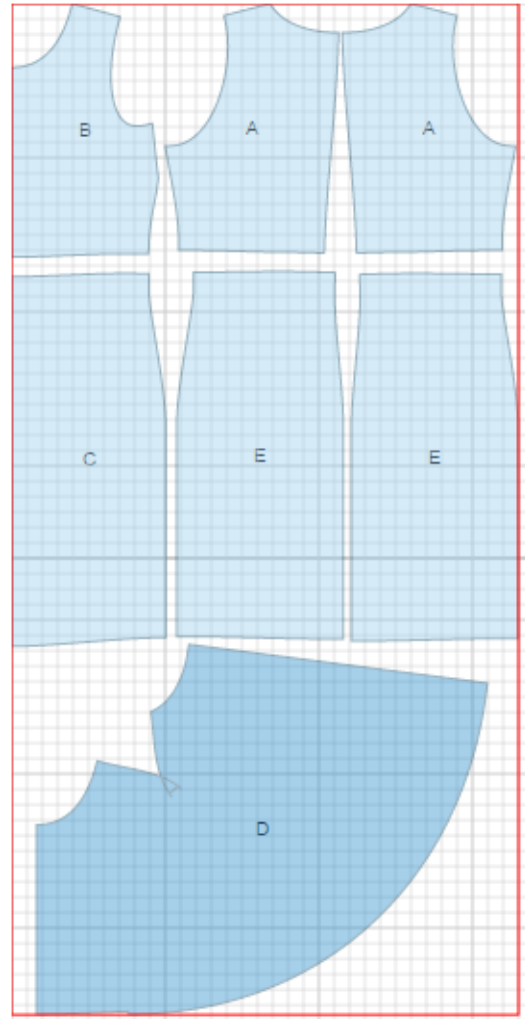
*Attention! The amount of fabric needed for your pattern is not included. It will depend on the selected pattern size, the width, and design of the fabric you plan to use. First, print all the paper patterns and lay them out at the width of fabric you plan to use (usually from 90 to 150 cm). Measure how much fabric you will need. Don't forget to account for pieces that need to be cut multiple times and pieces that are cut on the fold.*



## CUTTING:

### Main fabric:

1. Upper back - cut 2 (A)
2. Upper front - cut 1 on fold (B)
3. Lower front - cut 1 on fold (C)
4. Cape - cut 1 (D)
5. Lower back - cut 2 (E)



---

## INSTRUCTIONS:

1. Sew waist darts on backs. Press bulk towards center. Sew lower backs to upper backs. Serge and press seams upwards. Serge separately center back edges. Sew center back seam from zipper mark down to hem. Press seam open pressing the slit for zipper. Install zipper.
2. Sew bust darts on front. Press bulk upwards.
3. Sew shoulder seam of cape. Serge and press seam towards back. Clip into seam near the marks on lower edge of front part of cape. Serge lower and center back edges of cape, turn under and topstitch.
4. Sew shoulder seams of dress. Serge and press seams towards back.
5. Pin cape with right side to wrong side of dress and sew neckline. Clip seam on curves. Turn cape to outside and press.
6. Sew lower front to upper front inserting lower edge of front cape in seam. Serge seam.
7. Sew side seams. Serge and press seams towards back.
8. Cut a bias tape of 4 cm wide. Length is equal to armhole length + 6 cm. Fold bias tape in half lengthwise wrong sides together and press. Place bias tape along armhole from right side leaving tails and sew. Turn bias tape to inside, trim seam and topstitch along the fold. Press.
9. Serge hem of dress. Turn under, press and topstitch.

TECHNICAL DRAWING:

