

Recommendations on fabric: natural/mixed fabric suitable for blouses, shirt fabric.

You will also need: fusible interfacing.

Seam allowances: 1 cm for all seams, 2 cm for garment hem.

Note on seam allowances:

- If the pattern has double contour the seam allowances are included. They are 1 cm unless specified otherwise.
- If the pattern has single contour, the seam allowances are NOT included and need to be added when laying out the pattern.

Note on length of fabric:

Attention! The amount of fabric needed for your pattern is not included. It will depend on the selected pattern size, the width, and design of the fabric you plan to use. First, print all the paper patterns and lay them out at the width of fabric you plan to use (usually from 90 to 150 cm). Measure how much fabric you will need. Don't forget to account for pieces that need to be cut multiple times and pieces that are cut on the fold.



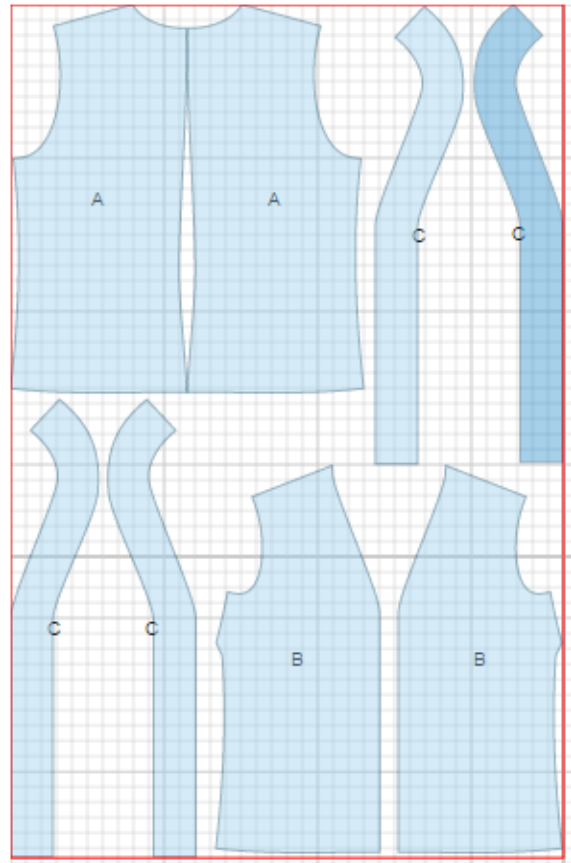
CUTTING:

Main fabric:

1. Back - cut 2 (A)
2. Front – cut 2 (B)
3. Front placket – cut 4 (C)

Fusible interfacing:

1. Front placket - cut 2 (C)



INSTRUCTIONS:

1. Apply interfacing to front plackets.
2. Sew bust darts on front. Press bulk upwards. Sew center back seam. Serge and press seam towards left side.
3. Sew side and shoulder seams. Serge and press seams towards back.
4. Sew outer plackets together at center back. Sew inner plackets together at center back. Place plackets right sides together and sew neck edge around neckline and down to center front mark. Clip at mark to seam line. Turn plackets right side out and press. Pin raw edges of placket to right side of front and sew along neckline and down center front. Serge, clip into curves and press to outside. Pin fronts right sides together and sew left placket to right placket from lower edge up to mark. Press seam open.

5. Cut (or buy) a bias tape of 4 cm wide. Length is equal to armhole length + 4 cm. Fold bias tape in half lengthwise right side out and press. Place bias tape on armhole from right side and sew. Turn bias tape to inside and topstitch along the fold.

6. Serge lower edge of blouse, turn under, press and topstitch. Tack center front seam to inside placket in two or three places.

TECHNICAL DRAWING:

