

Recommendations on fabric: light-weight natural or mixed denim fabric.

You will also need: fusible interfacing, invisible zipper of 15 cm long, 1 button.

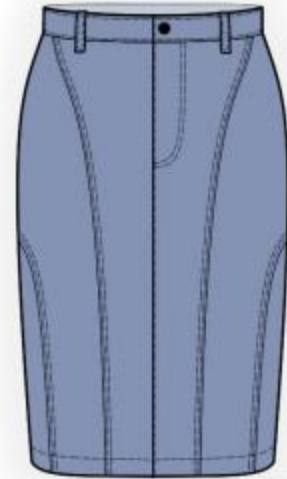
Seam allowances: upper edge of pocket - 2 cm, hem – 4.0 cm, other seams – 1.0 cm.

Note on seam allowances:

- If the pattern has double contour the seam allowances are included. They are 1 cm unless specified otherwise.
- If the pattern has single contour, the seam allowances are NOT included and need to be added when laying out the pattern.

Note on length of fabric:

Attention! The amount of fabric needed for your pattern is not included. It will depend on the selected pattern size, the width, and design of the fabric you plan to use. First, print all the paper patterns and lay them out at the width of fabric you plan to use (usually from 90 to 150 cm). Measure how much fabric you will need. Don't forget to account for pieces that need to be cut multiple times and pieces that are cut on the fold.



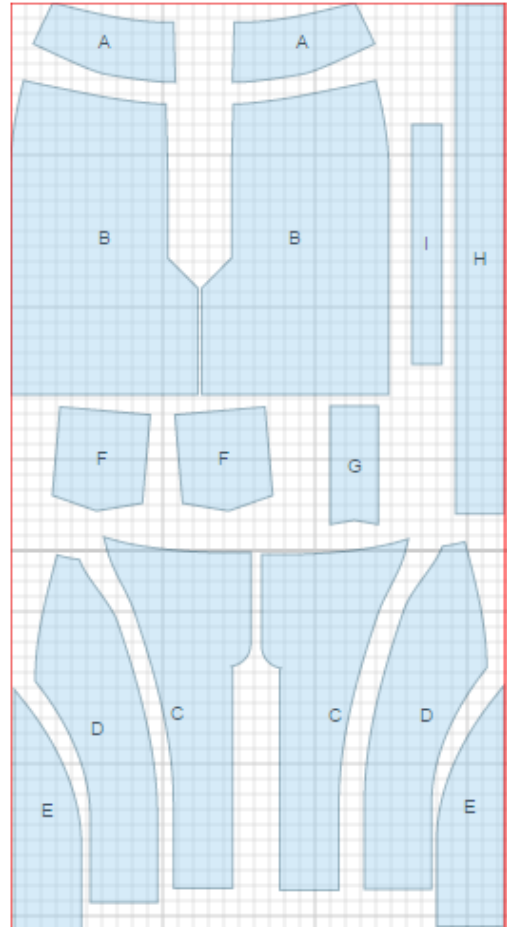
CUTTING:

Main fabric:

1. Yoke - cut 2 (A)
2. Back - cut 2 (B)
3. Center front - cut 2 (C)
4. Middle front - cut 2 (D)
5. Side front - cut 2 (E)
6. Pocket - cut 2 (F)
7. Fly catch - cut 1 (G)
8. Waistband - cut 1 (H)
9. Belt loop - cut 1 (I)

Fusible interfacing:

1. Waistband - cut 1 (H)
2. Fly catch - cut 1 (G)



INSTRUCTIONS:

1. Apply fusible interfacing to waistband, fly catch, vent and closure extension on center front.
2. Press belt loop in half lengthwise wrong sides together and open. Fold edges to fold line and press. Fold in half. Topstitch along both sides. Cut into loops.
3. Fold upper edge of pocket under, press and topstitch. Serge pocket edges, press under. Place pockets on backs according to marking and topstitch.
4. Sew yokes to backs, press seams towards yokes and topstitch at 0.1. and 0.7 cm from seam.
5. Serge separately center back edges. Serge vent seam allowances. Sew center back seam and vent with one continuous stitch. Press seam towards left side. Fasten vent seam allowances with machine stitch.
6. Sew middle fronts to center fronts. Serge and press seams towards center and topstitch at at 0.1. and 0.7 cm. Sew side fronts to middle fronts. Serge and press seams towards center and topstitch at at 0.1. and 0.7 cm.
7. Cut off the closure extension on left front leaving 2 cm. Serge edges of center fronts. Sew center front seam from zipper mark down to hem. Clip into seam near the mark. Press seam towards right side, serge and topstitch at 0.1 and 0.7 cm from seam.
8. Press extension of right front under along center line of front. Press extension on left piece under at 1 cm. Serge open edges of fly catch and press it lengthwise right side out. Sew zipper under allowance from left side into the edge, placing blades close to fold and placing fly catch with its fold to center so that serged edge will close zipper tape. Pin the slit matching front center lines. Sew free zipper tape to facing of right side of closure without catching front piece. Topstitch fly piece.
9. Sew side seams, serge and press towards back.
10. Fold waistband in half lengthwise right sides together and sew short edges. Turn waistband right side out and press. Sew outer part of waistband to upper edge of skirt. Turn inner edges of waistband under and topstitch into connecting seam. Make a buttonhole and sew a button.
11. Serge lower edge of skirt, fold to wrong side, press, and topstitch.
12. Topstitch belt loops on waistband according to technical drawing.

TECHNICAL DRAWING:

