

Recommendations on fabric: natural or mixed well draping suiting fabric.

You will also need: fusible interfacing, invisible zipper.

Seam allowances: hem – 4.0 cm, other seams – 1.0 cm.

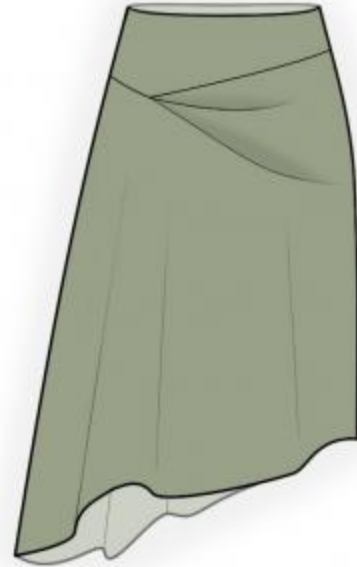
Note on seam allowances:

- If the pattern has double contour the seam allowances are included. They are 1 cm unless specified otherwise.

- If the pattern has single contour, the seam allowances are NOT included and need to be added when laying out the pattern.

Note on length of fabric:

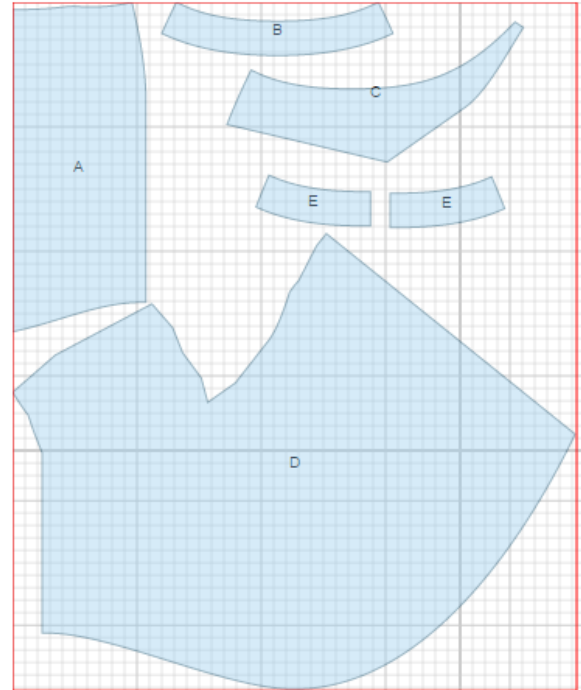
Attention! The amount of fabric needed for your pattern is not included. It will depend on the selected pattern size, the width, and design of the fabric you plan to use. First, print all the paper patterns and lay them out at the width of fabric you plan to use (usually from 90 to 150 cm). Measure how much fabric you will need. Don't forget to account for pieces that need to be cut multiple times and pieces that are cut on the fold.



CUTTING:

Main fabric:

1. Left back - cut 1 (A)
2. Front facing - cut 1 (B)
3. Yoke - cut 1 (C)
4. Front - cut 1 (D)
5. Back facing - cut 2 (E)



Fusible interfacing:

1. Front facing - cut 1 (B)
2. Back facing - cut 2 (E)

INSTRUCTIONS:

1. Apply fusible interfacing to facings.
2. Sew darts on back and front pieces, press bulk towards center.
3. Trim seam allowance in corner of front piece. Make pleats according to marking with bulk of pleats facing down. Serge vertical edges of pleats with one serging stitch.
4. Sew yoke to front. Serge and press seam towards yoke.
5. Serge separately center back edges. Sew center back seam from zipper mark down to hem. Press seam open. Sew in zipper.
6. Sew side seams, serge and press seam towards back.
7. Sew side seams of facings and press open. Serge lower edge. Pin facing to skirt right sides together and sew upper edge. Understitch allowances on facing at 0.2 cm from seam. Turn facing to inside and press. Tach seam allowances to zipper tape.
8. Serge lower edge of skirt, fold to wrong side, press, and slipstitch.

TECHNICAL DRAWING:

