

Recommendations on fabric: natural or mixed suiting fabric, fabric of contrast colour for trim.

You will also need: fusible interfacing; lining; 5 buttons; shoulder pads; sleeve heads.

Seam allowances: all seams -1 cm, on hems - 3.0 cm.

Note on seam allowances:

- If the pattern has double contour the seam allowances are included. They are 1 cm unless specified otherwise.
- If the pattern has single contour, the seam allowances are NOT included and need to be added when laying out the pattern.

Note on length of fabric:

Attention! The amount of fabric needed for your pattern is not included. It will depend on the selected pattern size, the width, and design of the fabric you plan to use. First, print all the paper patterns and lay them out at the width of fabric you plan to use (usually from 90 to 150 cm). Measure how much fabric you will need. Don't forget to account for pieces that need to be cut multiple times and pieces that are cut on the fold.



CUTTING:

Main fabric:

1. Back neck facing – cut 1 (A)
2. Side back – cut 2 (B)
3. Side front – cut 2 (C)
4. Center back - cut 2 (D)
5. Center right front - cut 1 (E)
6. Center left front - cut 1 (F)
7. Left front facing - cut 1 (G)
8. Right front facing - cut 1 (H)
9. Outer collar - cut 1 (I)
10. Inner collar - cut 1 (J)
11. Collar trim - cut 1 (K)
12. Upper sleeve – cut 2 (L)
13. Lower sleeve – cut 2 (M)

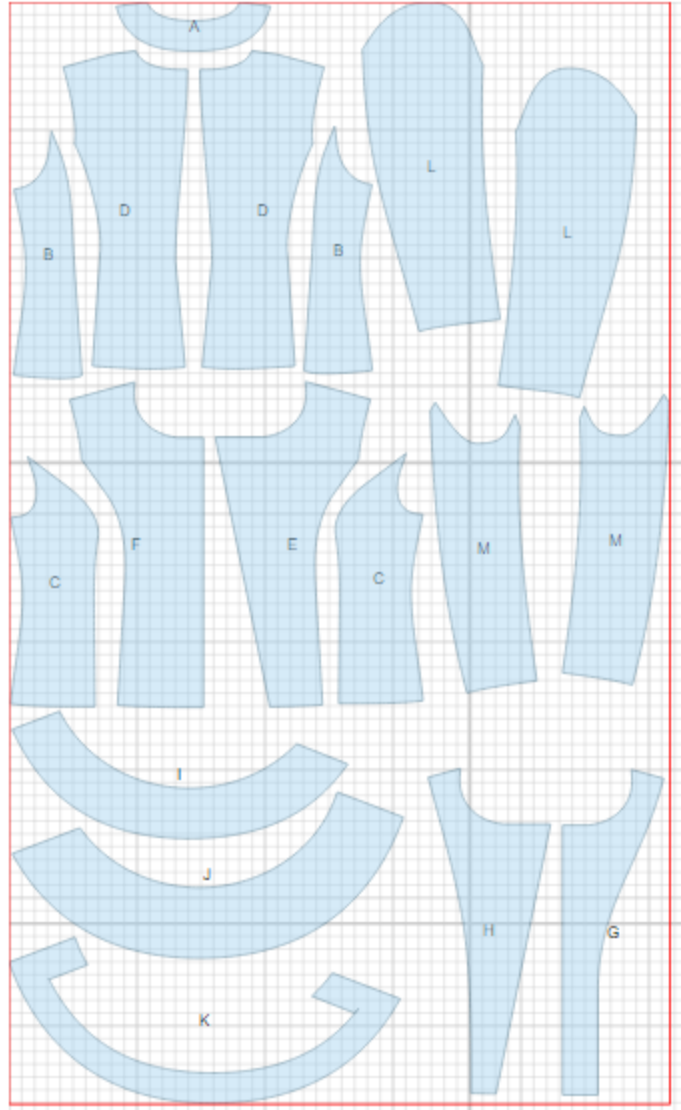
Lining:

1. Center back – cut 2 (D)
2. Side back – cut 2 (B)
3. Side front - cut 2 (C)
4. Center front - cut 2 (F)
5. Upper sleeve – cut 2 (L)
6. Lower sleeve – cut 2 (M)

*ATTENTION: Lining is cut using main fabric patterns excluding the width of facing. Add a pleat on lining.

Fusible interfacing:

1. Center right front - cut 1 (E)
2. Center left front - cut 1 (F)
3. Left front facing - cut 1 (G)
4. Right front facing - cut 1 (H)
5. Back neck facing – cut 1 (A)
6. Outer collar - cut 1 (I)
7. Collar trim - cut 1 (K)



INSTRUCTIONS:

1. Apply interfacing to listed pieces, as well as to hem of the garment and hem of sleeves.
2. Sew and press darts towards center on back. Sew side backs to center backs and press seams towards center. Sew center back seam and press seam open.
3. Sew side fronts to center fronts and press seams towards center.
4. Sew shoulder and side seams of jacket. Press seams open.
5. Sew collar trim to outer collar clipping into seam in corners. Press seam towards collar.
6. Place collars right sides together and sew outer edge. Clip seam on curves, trim in corners. Turn collar right side out, straighten and press. Sew collar into neckline.
7. Sew and press open shoulder seams of back neck facing and front facings. Pin facing onto front of jacket, right sides together. Sew center front and neckline. Sew lower edges of front facings to front exactly on hem turn-up marking, leaving 1.5 cm to inner edge of facing. Trim corners. Turn jacket right side out, straighten and press seams.
8. Sew and press open elbow seam of sleeve. Press hem of sleeve. Sew and press open front sleeve seam. Make a gathering stitch along sleeve cap to adjust ease. Sew sleeves into armholes matching notches, and adjusting ease. Sew in shoulder pads and sleeve heads.
9. Sew lining pieces together, leaving a slit open in left front sleeve seam. Sew lining to inner edges of facings. Turn hem of jacket under. Sew lining to hem of jacket and lower edge of sleeve. Turn jacket out through the opening in sleeve. Sew opening closed.
10. Make buttonholes on right front, sew buttons on left front.

TECHNICAL DRAWING:

