

Recommendations on fabric: light-weight natural or mixed suiting fabric.

You will also need: fusible interfacing, invisible zipper.

Seam allowances: hem – 4.0 cm, other seams – 1.0 cm.

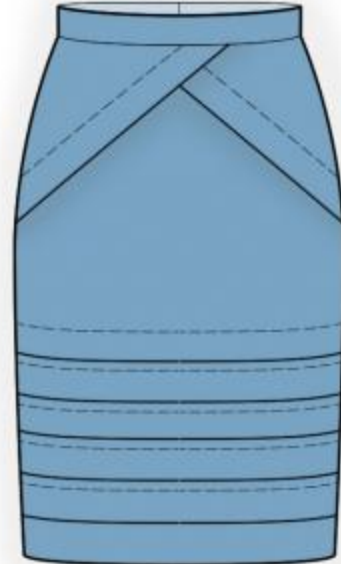
**Note on seam allowances:**

- If the pattern has double contour the seam allowances are included. They are 1 cm unless specified otherwise.

- If the pattern has single contour, the seam allowances are NOT included and need to be added when laying out the pattern.

**Note on length of fabric:**

*Attention! The amount of fabric needed for your pattern is not included. It will depend on the selected pattern size, the width, and design of the fabric you plan to use. First, print all the paper patterns and lay them out at the width of fabric you plan to use (usually from 90 to 150 cm). Measure how much fabric you will need. Don't forget to account for pieces that need to be cut multiple times and pieces that are cut on the fold.*



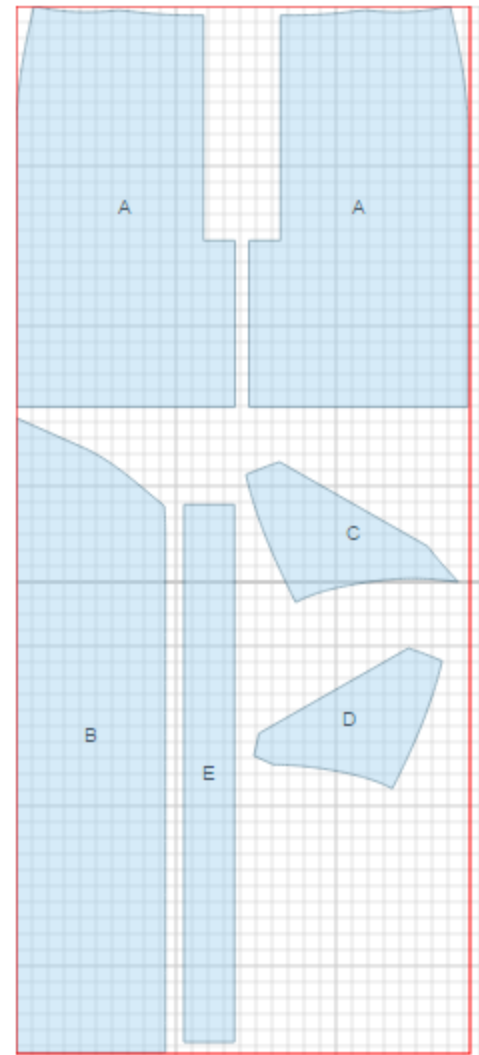
## CUTTING:

### Main fabric:

1. Back - cut 2 (A)
2. Front - cut 1 on fold (B)
3. Right side front - cut 1 (C)
4. Left side front - cut 1 (D)
5. Waistband - cut 1 (E)

### Fusible interfacing:

1. Waistband - cut 1 (E)



---

**INSTRUCTIONS:**

1. Apply fusible interfacing to waistband.
2. Sew darts on back, press bulk towards center.
3. Serge separately center back edges. Serge vent seam allowances. Sew center back seam from zipper mark to vent corner. Trim corner of vent seam allowance on right side. Press center seam open, press vent allowances and fasten them on right side with machine stitch. Install zipper.
4. Make and stitch pleats on front according to marking. Press folds downwards.
5. Sew left side piece to front, serge and press seam. Make and topstitch a pleat on left side piece (on side and upper edges there is an extension; fasten the extension so that the pleat fits to front). Sew right side piece to front, serge and press seam. Make and topstitch a pleat on right side piece (on side and upper edges there is an extension; fasten the extension so that the pleat fits to front).
6. Sew side seams, serge and press towards back.
7. Pin waistband to upper edge of skirt and sew leaving an extension on right back end of waistband. Sew ends of waistband. Turn inner edges of waistband under and topstitch from right side into connecting seam. Make a buttonhole on left end of waistband, sew a button on right end.
8. Serge lower edge of dress, fold to wrong side, press, and slipstitch.

TECHNICAL DRAWING:

