

Recommendations on fabric: natural or mixed dress fabric.

You will also need: fusible interfacing, invisible zipper.

Seam allowances: hem - 3.0 cm, lower edge of sleeve – 2.0 cm, other seams – 1.0 cm.

Note on seam allowances:

- If the pattern has double contour the seam allowances are included. They are 1 cm unless specified otherwise.
- If the pattern has single contour, the seam allowances are NOT included and need to be added when laying out the pattern.

Note on length of fabric:

Attention! The amount of fabric needed for your pattern is not included. It will depend on the selected pattern size, the width, and design of the fabric you plan to use. First, print all the paper patterns and lay them out at the width of fabric you plan to use (usually from 90 to 150 cm). Measure how much fabric you will need. Don't forget to account for pieces that need to be cut multiple times and pieces that are cut on the fold.



CUTTING:

Main fabric:

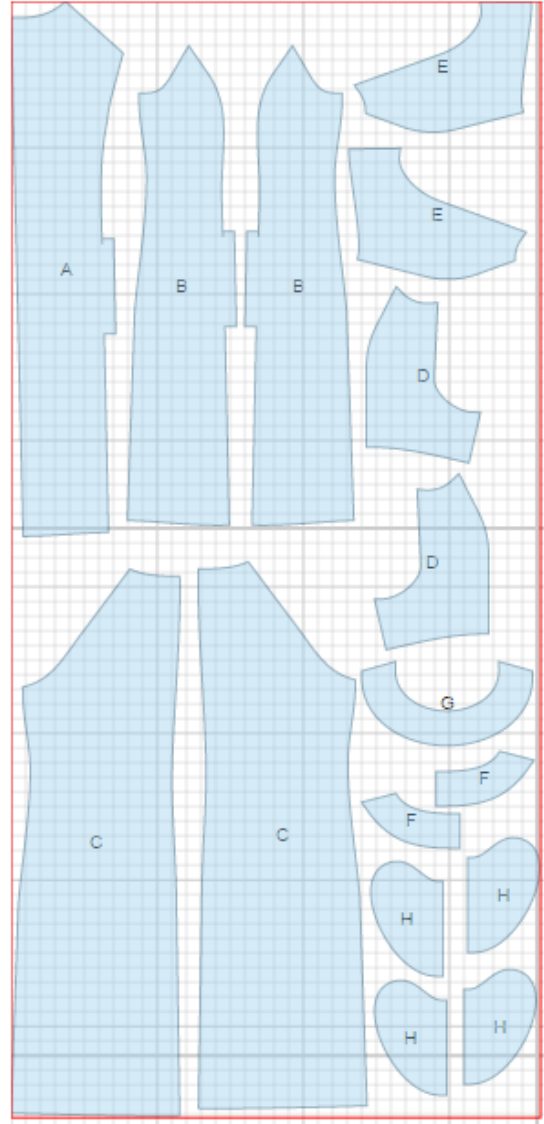
1. Front - cut 1 on fold (A)
2. Side front - cut 2 (B)
3. Back - cut 2 (C)
4. Front sleeve - cut 2 (D)
5. Back sleeve - cut 2 (E)
6. Back neck facing - cut 2 (F)
7. Front neck facing - cut 1 (G)

Lining:

1. Pocket bag - cut 4 (H)

Fusible interfacing:

1. Back neck facing - cut 2 (F)
2. Front neck facing - cut 1 (G)



INSTRUCTIONS:

1. Apply fusible interfacing to neck facings.
2. Sew waist darts on backs. Press bulk towards center. Serge separately back center edges. Sew center back seam from zipper mark down to hem. Press seam open pressing slit for zipper. Install zipper.
3. Sew bust darts on front. Press bulk upwards.
4. Sew pocket bags to front and side fronts. Serge and press seams towards pocket bag. Sew side fronts to front sewing pocket bag pieces together. Serge and press seams towards center.
5. Sew sleeve pieces to front and back. Serge and press seams towards dress.
6. Sew shoulder and sleeve seam with one continuous stitch. Serge and press seam towards back.
7. Make and fasten a pleat on front.
8. Sew side and sleeve seam with one continuous stitch. Serge and press seam towards back.
9. Sew shoulder seams of neck facings. Serge outer edge. Pin facing and dress right sides together and sew. Clip seam on curves. Turn facing to inside and press. Tack facing to shoulder seams and to zipper tape.
10. Serge lower edge of dress, turn under, press and topstitch. Serge lower edge of sleeve, turn under, press and topstitch.

TECHNICAL DRAWING:

