

Recommendations on fabric: natural or mixed suiting fabric.

You will also need: interfacing; lining; 1 button; shoulder pads; sleeve heads, a clasp.

Seam allowances: all seams -1 cm, on hem and lower edge of sleeve - 3.0 cm.

Note on seam allowances:

- If the pattern has double contour the seam allowances are included. They are 1 cm unless specified otherwise.

- If the pattern has single contour, the seam allowances are NOT included and need to be added when laying out the pattern.

Note on length of fabric:

Attention! The amount of fabric needed for your pattern is not included. It will depend on the selected pattern size, the width, and design of the fabric you plan to use. First, print all the paper patterns and lay them out at the width of fabric you plan to use (usually from 90 to 150 cm). Measure how much fabric you will need. Don't forget to account for pieces that need to be cut multiple times and pieces that are cut on the fold.



CUTTING:

Main fabric:

1. Back neck facing – cut 1 (A)
2. Side back – cut 2 (B)
3. Side front – cut 2 (C)
4. Half-belt - cut 1 (D)
5. Center back - cut 2 (E)
6. Center front - cut 2 (F)
7. Front facing - cut 2 (G)
8. Belt - cut 1 (H)
9. Upper sleeve – cut 2 (I)
10. Lower sleeve – cut 2 (J)

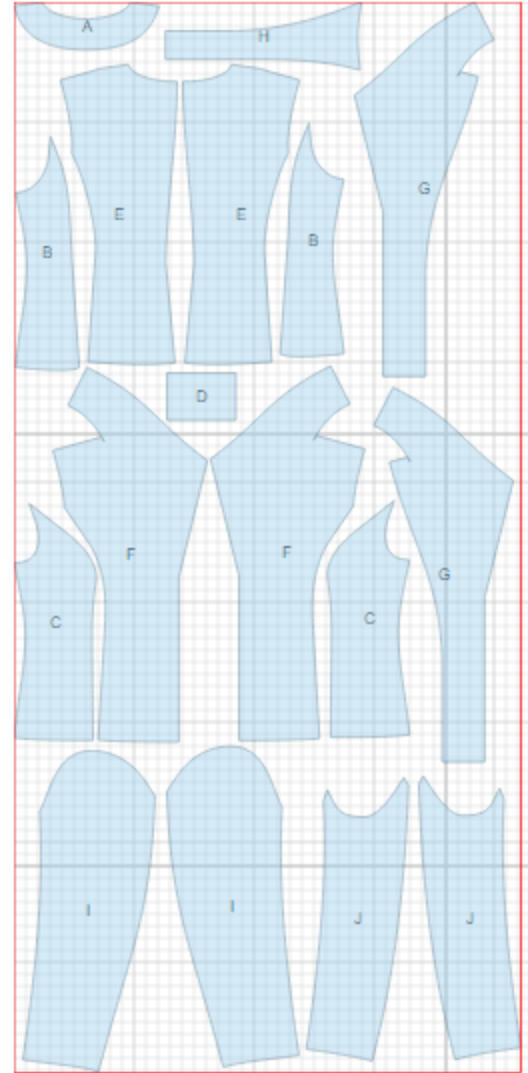
Lining:

1. Side back – cut 2 (B)
2. Center back – cut 2 (E)
3. Side front - cut 2 (C)
4. Center front - cut 2 (F)
5. Upper sleeve – cut 2 (I)
6. Lower sleeve – cut 2 (J)

*ATTENTION: Lining is cut using main fabric patterns excluding the width of facing. Add a pleat on lining.

Fusible interfacing:

1. Center front – cut 2 (F)
2. Front facing - cut 2 (G)
3. Back neck facing – cut 1 (A)



INSTRUCTIONS:

1. Apply interfacing to listed pieces.
2. Sew and press darts towards center on back. Sew side backs to center backs and press seams open. Sew center back seam and press seam open.
3. Fold half-belt in half lengthwise right sides together and sew on long and one short sides. Trim seams. Turn half-belt right side out, straighten and press.
4. Sew side fronts to center fronts inserting half-belt into left seam, press seams towards center.
5. Clip into seam on belt near the longitudinal mark. Fold extending part in half lengthwise and sew the extension. Start and finish stitch exactly at longitudinal mark. Turn belt right side out. Turn edges of belt under and topstitch belt onto right front.
6. Sew side seams of jacket. Press seams open. Clip seam allowance in corner near shoulder seam. Sew collar seam. Press seam open. Sew shoulder seams, sewing outer collar into neckline at the same time.
7. Sew elbow seam of sleeve. Press seam open. Sew front sleeve seam. Press seam open. Make a gathering stitch along sleeve cap to adjust ease. Sew sleeves into armholes matching notches, and adjusting ease. Sew in shoulder pads and sleeve heads.
8. Sew lining pieces together, leaving a slit open in front right seam of sleeve. Sew shoulder seams of back to neckline facing and front facings, clip seam in corners. Sew collar seam. Sew inner collar into neckline. Press seam open. Sew lining to front facings and back neck facing.
9. Pin facing onto right side of front right sides together. Sew center front, neckline, and hem of the garment. Turn belt towards side seam. Sew lining to lower edge of sleeve. Turn jacket right side out. Fasten seam allowances of inner and outer collars together. Sew opening in sleeve closed.
10. Make buttonhole on left front, sew button on right front. Set half-belt into the clasp.

TECHNICAL DRAWING:

