

Recommendations on fabric: natural or mixed dress fabric.

You will also need: fusible interfacing.

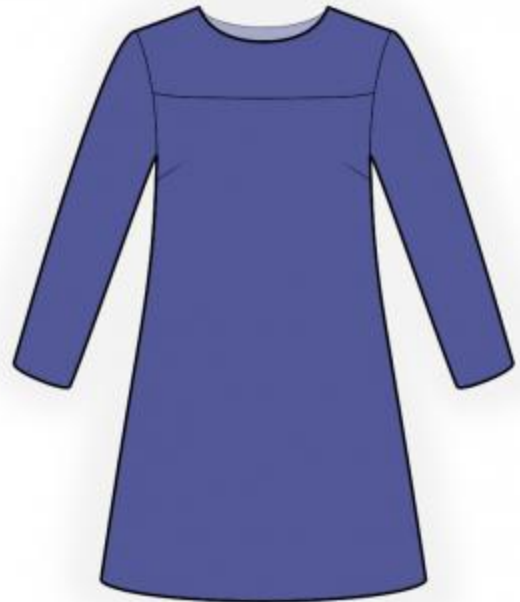
Seam allowances: hem - 2.0 cm, lower edge of sleeve – 2.0 cm, other seams – 1.0 cm.

Note on seam allowances:

- If the pattern has double contour the seam allowances are included. They are 1 cm unless specified otherwise.
- If the pattern has single contour, the seam allowances are NOT included and need to be added when laying out the pattern.

Note on length of fabric:

Attention! The amount of fabric needed for your pattern is not included. It will depend on the selected pattern size, the width, and design of the fabric you plan to use. First, print all the paper patterns and lay them out at the width of fabric you plan to use (usually from 90 to 150 cm). Measure how much fabric you will need. Don't forget to account for pieces that need to be cut multiple times and pieces that are cut on the fold.



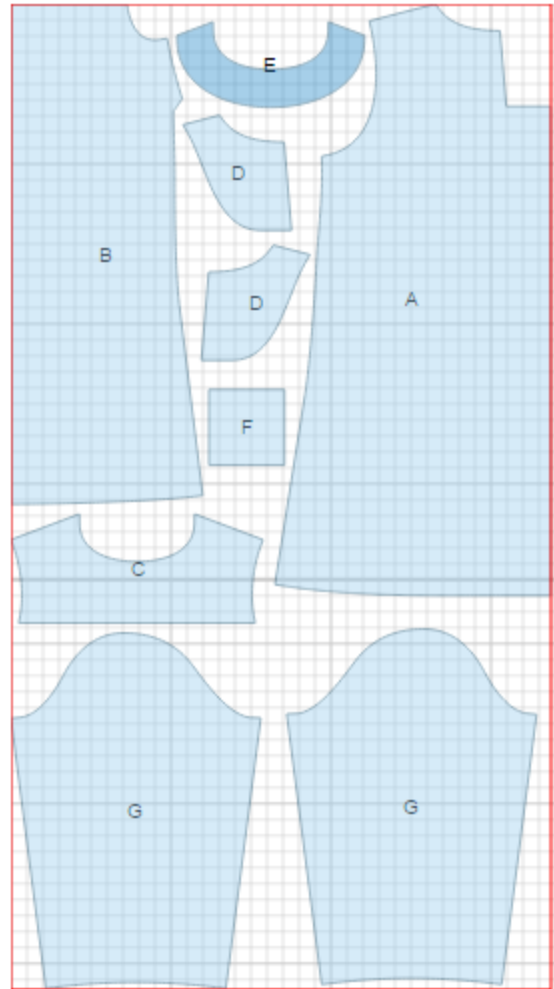
CUTTING:

Main fabric:

1. Back - cut 1 on fold (A)
2. Front - cut 1 on fold (B)
3. Front yoke - cut 1 (C)
4. Back neck facing - cut 2 (D)
5. Front neck facing - cut 1 (E)
6. Bow - cut 1 (F)
7. Sleeve - cut 2 (G)

Fusible interfacing:

1. Back neck facing - cut 2 (D)
2. Front neck facing - cut 1 (E)



INSTRUCTIONS:

1. Apply fusible interfacing to neck facings.
2. Fold back piece in half lengthwise right sides together and sew the pleat at 6-7 cm from upper edge. Unfold bulks of pleat shaping a bow pleat and press.
3. Sew darts on front. Press bulk upwards.
4. Sew front yoke to front. Serge and press seam towards yoke.
5. Sew shoulder and side seams. Serge and press towards back.
6. Sew shoulder seams of neck facings. Serge outer edge. Pin facing and dress right sides together and sew. Clip seam on curves, trim in corners. Turn facing to inside and press. Tack upper edge of pleat bulk to facing.
7. Sew sleeve seam. Serge and press towards back. Make a gathering stitch along sleeve cap to adjust ease. Sew sleeves into armholes matching notches and adjusting ease. Serge and press seams.
8. Serge lower edge of dress, turn under, press and topstitch. Serge lower edge of sleeve, turn under, press and topstitch.
9. Fold bow piece in half lengthwise right sides together and sew on three sides leaving an opening for turnout. Trim seams in corners. Turn bow right side out and press. Sew opening closed by hand. Make a gathering stitch along bow's center and gather fullness. Sew bow on dress according to technical drawing.

TECHNICAL DRAWING:

