

Recommendations on fabric: blouse fabric of two colours.

You will also need: a button.

Seam allowances: lower edge of sleeve - 1.5 cm, other seams - 1.0 cm.

Note on seam allowances:

- If the pattern has double contour the seam allowances are included. They are 1 cm unless specified otherwise.
- If the pattern has single contour, the seam allowances are NOT included and need to be added when laying out the pattern.

Note on length of fabric:

Attention! The amount of fabric needed for your pattern is not included. It will depend on the selected pattern size, the width, and design of the fabric you plan to use. First, print all the paper patterns and lay them out at the width of fabric you plan to use (usually from 90 to 150 cm). Measure how much fabric you will need. Don't forget to account for pieces that need to be cut multiple times and pieces that are cut on the fold.

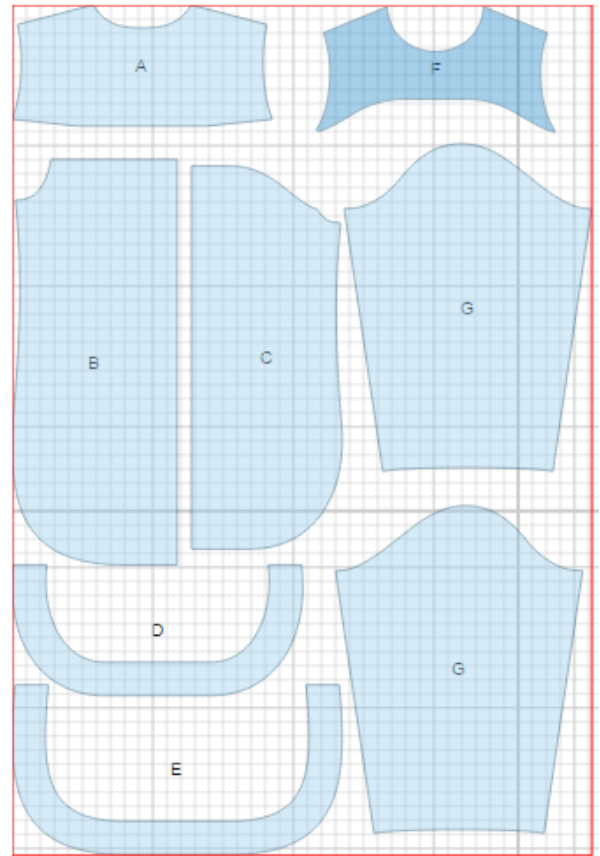


CUTTING:

Main fabric:

1. Back yoke - cut 1 (A)
2. Back - cut 1 on fold (B)
3. Front - cut 1 on fold (C)
4. Front hem facing - cut 1 (D)
5. Back hem facing - cut 1 (E)
6. Front yoke - cut 1 (F)*
7. Sleeve - cut 2 (G)*

** Pieces can be cut out of contrast fabric if desired.*



INSTRUCTIONS:

1. Sew back yoke to back. Serge and press seam upwards.
2. Cut a bias tape of 2.5 cm wide and 5 cm long for button loop. Fold bias tape in half and sew at 0.3 cm from fold. Cut seam allowances off close to stitch, turn tape right side out and straighten. Adjust loop length.
3. Make a slit on back from upper edge to mark. Cut a bias tape of 4.0 cm wide. Length is equal to slit length + 4 cm. Fold bias tape in half right side out and press. Finish back slit with bias tape inserting loop.
4. Sew front yoke to front. Serge and press seam upwards.
5. Sew shoulder seams. Serge and press seams towards back.
6. Cut a bias tape of 4.0 cm wide. Length is equal to neckline length + 4 cm. Fold bias tape in half right side out and press. Finish neckline with bias tape.
7. Clip into side seam at the mark. Sew side seams. Serge and press towards back. Serge upper edge of front facing. Pin facing to hem right sides together and sew on lower edge. Trim seam. Turn facing to inside. Topstitch facing to the front from the right side of the garment. Sew back hem facing the same way.
8. Sew sleeve seam. Serge and press seam towards back. Make a gathering stitch along the sleeve cap to adjust ease. Sew sleeves into armholes matching notches. Serge and press seams. Serge lower edge of sleeve, press under and topstitch.
9. Sew a button on back.

TECHNICAL DRAWING:

