

Recommendations on fabric: light-weight natural or mixed suiting fabrics.

You will also need: fusible interfacing, invisible zipper.

Seam allowances: hem – 4.0 cm, other seams – 1.0 cm.

**Note on seam allowances:**

- If the pattern has double contour the seam allowances are included. They are 1 cm unless specified otherwise.
- If the pattern has single contour, the seam allowances are NOT included and need to be added when laying out the pattern.

**Note on length of fabric:**

Attention! The amount of fabric needed for your pattern is not included. It will depend on the selected pattern size, the width, and design of the fabric you plan to use. First, print all the paper patterns and lay them out at the width of fabric you plan to use (usually from 90 to 150 cm). Measure how much fabric you will need. Don't forget to account for pieces that need to be cut multiple times and pieces that are cut on the fold.



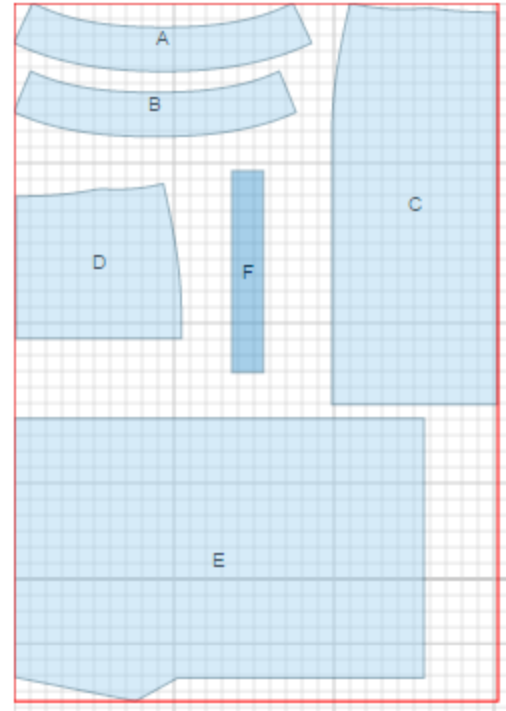
## CUTTING:

### Main fabric:

1. Front facing – cut 1 (A)
2. Back facing - cut 1 (B)
3. Back - cut 1 on fold (C)
4. Front yoke - cut 1 (D)
5. Lower front - cut 1 on fold (E)
6. Belt-loop - cut 1 (F)

### Fusible interfacing:

1. Front facing – cut 1 (A)
2. Back facing - cut 1 (B)



## INSTRUCTIONS:

1. Apply fusible interfacing to facings.
2. Sew darts on front yoke and back, press bulk towards center.
3. Make and fasten pleats on lower front. Sew lower front to front yoke. Serge and press seam upwards.
4. Serge separately left side edges. Sew left side seam from zipper mark down to hem. Press seam open pressing slit for zipper. Sew in zipper. Sew right side seam. Serge and press seam towards back.
5. Sew right side seam of facings. Press seam open. Serge outer edge. Pin facing to upper edge of skirt right sides together and sew. Understitch seam allowance on facing at 0.2 cm from connecting seam. Turn facing to inside and press. Tack seam allowances to zipper tape.
6. Serge lower edge of skirt. Turn under and slipstitch.

7. Fold belt-loop in half lengthwise right sides together and sew at 0.5 - 0.7 cm from edge. Turn right side out, straighten and press. Cut into loops and topstitch them on darts according to technical drawing.

**TECHNICAL DRAWING:**

