

Recommendations on fabric: natural or mixed fabric suitable for blouses.

You will also need: fusible interfacing, 6 buttons

Seam allowances: all seams – 1.0 cm, hem - 1.5 cm.

**Note on seam allowances:**

- If the pattern has double contour the seam allowances are included. They are 1 cm unless specified otherwise.
- If the pattern has single contour, the seam allowances are NOT included and need to be added when laying out the pattern.

**Note on length of fabric:**

*Attention! The amount of fabric needed for your pattern is not included. It will depend on the selected pattern size, the width, and design of the fabric you plan to use. First, print all the paper patterns and lay them out at the width of fabric you plan to use (usually from 90 to 150 cm). Measure how much fabric you will need. Don't forget to account for pieces that need to be cut multiple times and pieces that are cut on the fold.*



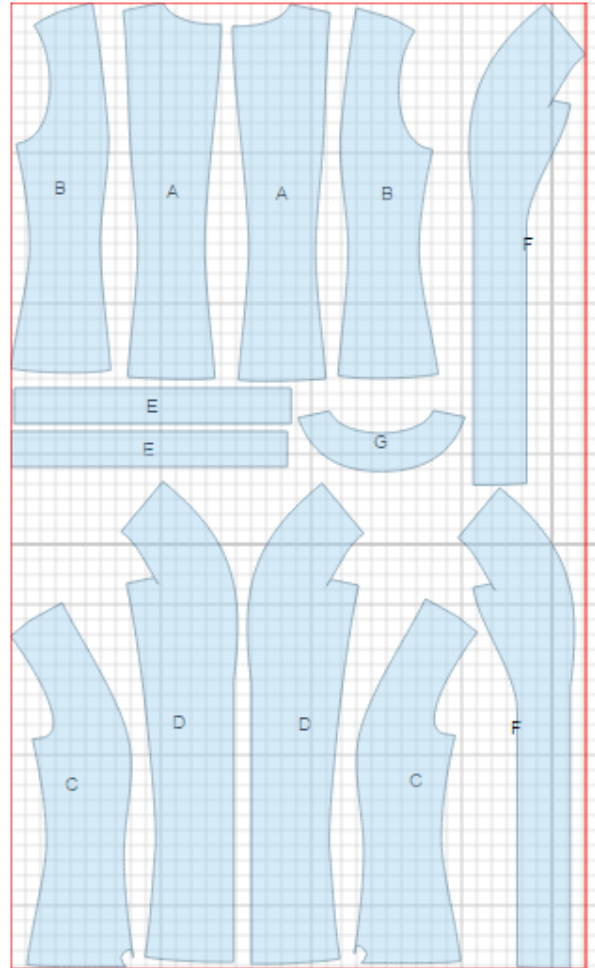
## CUTTING:

### Main fabric:

1. Center back – cut 2 (A)
2. Side back - cut 2 (B)
3. Side front - cut 2 (C)
4. Center front - cut 2 (D)
5. Cuff - cut 2 (E)
6. Front facing - cut 2 (F)
7. Back neck facing - cut 1 (G)

### Fusible interfacing:

1. Front facing - cut 2 (F)
2. Back neck facing - cut 1 (G)



---

## INSTRUCTIONS:

1. Apply fusible interfacing to facings.
2. Sew side backs to center backs. Serge and press seams towards center. Sew center back seam. Serge and press seam towards left side seam.
3. Sew side fronts to center fronts. Serge and press seams towards center.
4. Sew side seams. Serge and press seams towards back.
5. Sew shoulder seams. Serge and press seams open. Sew collar seam and press open. Snip seam allowance near shoulder seam and sew collar into back neckline.
6. Sew shoulder seams of front facing and back neck facing. Press seams open. Sew collar seam of front facing. Press open. Snip seam allowance near shoulder seam and sew collar into neckline of back neck facing. Serge outer edges of front facings and back neck facing.
7. Place front facings and neck facing on blouse right sides together and sew along front edge and collar. Turn front facings under and press. Tack collars together along connecting seam. Tack front facings and neck facing to shoulder seams.
8. Sew cuff into ring. Press seam open. Fold cuff in half along center line and press. Sew cuff into armhole. Serge seam.
9. Serge hem of blouse, turn under and topstitch.
10. Make buttonholes on right front. Sew buttons on left front.

TECHNICAL DRAWING:

