

S3071 Sewist 3071

Recommended fabrics: natural/mixed well draping fabrics suitable for skirts.

Ease: about 1/2 inch around waist and around 1 inch around hips.

Seam allowances: all seams 3/8 inch, back center seam 5/8 inch to allow for zipper installation, hem of skirt - 1 inch.

You will also need: zipper, hook and eye, fusible interfacing.

Note on seam allowances:

- If the pattern has double contour the seam allowances are included.

- If the pattern has single contour, the seam allowances are NOT included and need to be added when laying out the pattern.

Note on length of fabric:

Attention! The amount of fabric needed for your pattern is not included. It will depend on the selected pattern size, the width, and design of the fabric you plan to use. You are welcome to use the Online Fabric Estimator to make calculations.

Alternatively, print all the paper patterns and lay them out at the width of fabric you plan to use (usually from 90 to 150 cm). Measure how much fabric you will need. Don't forget to account for pieces that need to be cut multiple times and pieces that are cut on the fold.



PRINTING:

Please use Adobe Reader software to open your PDF pattern. You can get Adobe Reader free of charge at this link - <https://get.adobe.com/reader/>.

Make sure you print your patterns at actual size (100%% scale or None) and on single sides of plain A4 paper. Verify that the print out size is to the correct scale by measuring the test square on the first page. The upper edge of the square features a centimeter scale, and the bottom edge features an inch scale.

Trim top and/or right margin of the pages where you see the scissors symbols. In the center of each page, the number of row and column is printed, separated by / sign. Construct layout pages according to these marks (for example, page marked 2/3 is in the second row and in the third column). Align pages using margins and tape or glue together.

CUTTING:

Note on cutting:

Lay out your pieces according to straight of grain as marked on the pattern pieces.

Some pieces will be cut on the fold, the corresponding edge will then be marked with a fold mark. Kindly pay attention to notes regarding type of fabric and quantity of required pieces on a block. For example, [Main, Interfacing - cut 1+1] on a pattern piece means that you need to cut 1 piece as is and 1 mirrored piece from the main fabric as well as from interfacing.

Make sure to mark all notches and other design features such as pleats etc. from the pattern piece onto your fabric. When sewing the garment, pay attention to notches, they must match up.

Self 1

- (A) Center Front - cut 1 on fold
- (B) Center Back - cut 1 +1
- (C) Upper Side Back - cut 1 +1

Self 2

- (D) Inset 1 - cut 1 +1

Self 3

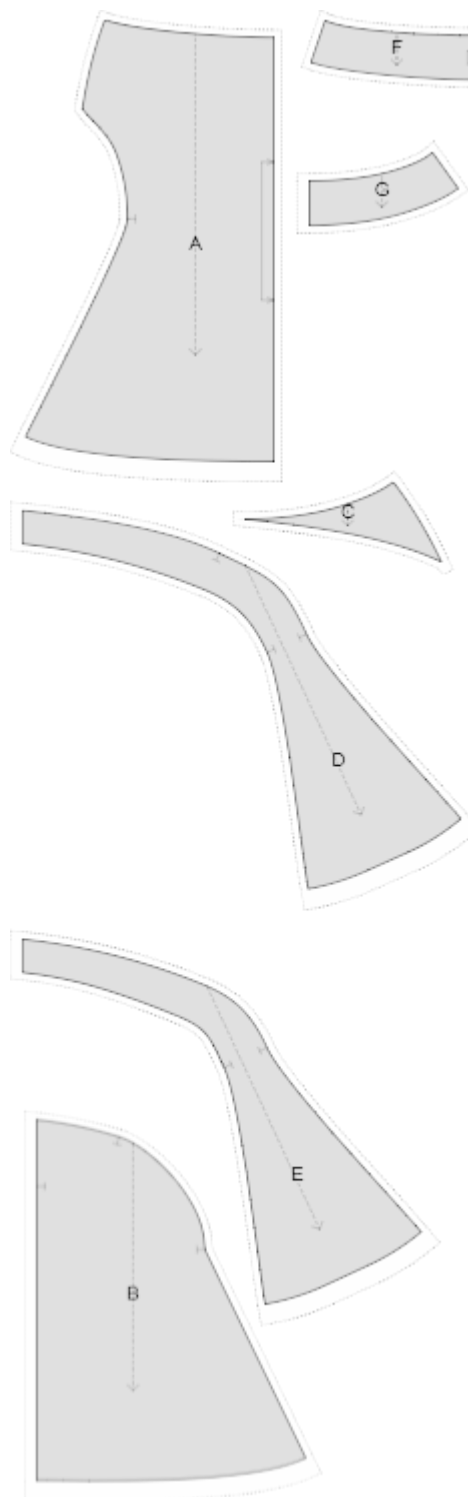
- (E) Inset 2 - cut 1 +1

Self

- (F) Front Waistband / Facing - cut 1 on fold
 - (G) Back Waistband / Facing - cut 1 +1
- Interfacing

- (F) Front Waistband / Facing - cut 1 on fold
- (G) Back Waistband / Facing - cut 1 +1

* The capital letters in brackets correspond to pattern blocks as seen in Online Fabric Estimator and in pattern blocks preview on the right.



INSTRUCTIONS:

1. Apply fusible interfacing to front and back waistband facings.
2. Sew Upper Backs to Center Fronts along side seams. Serge and press towards back.

3. Pin upper edge of Inset 1 to lower edge of Upper Back and Center Front from the right side, right sides together, matching notches of side seam and those on Center Front. Sew, clip into curves, serge and press towards bottom.
4. Pin upper edge of Inset 2 to lower edge of Inset 1 from the right side, right sides together, matching notches. Sew, clip into curves, serge and press towards bottom.
5. Pin upper edge of Center Back to lower edge of Inset 2 from the right side, right sides together, matching notches. Sew, clip into curves, serge and press towards bottom.
6. Sew side seams on front and back waistbands (same pattern block as for facings). Press seam apart. Repeat for waistband facings.
7. Pin waistband onto skirt from the right side, right sides together, matching side seams and center front. Sew, serge and press towards waistband.
8. Serge lower edge of waistband facings. Pin waistband facings to waistband, right sides together, matching side seams and center front. Sew, turn facing onto wrong side and press.
9. Serge center back seams separately. Pin right back to lower back, right sides together, matching notches and sew from zipper notch to bottom. Press seam apart, pressing the slit for zipper at the same time. Sew in zipper.
10. Turn seam allowances on waistband facings near center back seam and press. Slip stitch them to zipper tape. Pin waistband and waistband facings together and stitch in the ditch from the right side. Sew hook and eye close to waist.
11. Hem the skirt by hand or machine as desired.

TECHNICAL DRAWING:

