

Recommendations on fabric: natural or mixed suiting fabric.

You will also need: fusible interfacing, raglan shoulder pads, 2 hooks with eyelets.

Seam allowances: all seams – 1.0 cm, lower edge of sleeves - 3.0 cm.

Note on seam allowances:

- If the pattern has double contour the seam allowances are included. They are 1 cm unless specified otherwise.

- If the pattern has single contour, the seam allowances are NOT included and need to be added when laying out the pattern.

Note on length of fabric:

Attention! The amount of fabric needed for your pattern is not included. It will depend on the selected pattern size, the width, and design of the fabric you plan to use. First, print all the paper patterns and lay them out at the width of fabric you plan to use (usually from 90 to 150 cm). Measure how much fabric you will need. Don't forget to account for pieces that need to be cut multiple times and pieces that are cut on the fold.



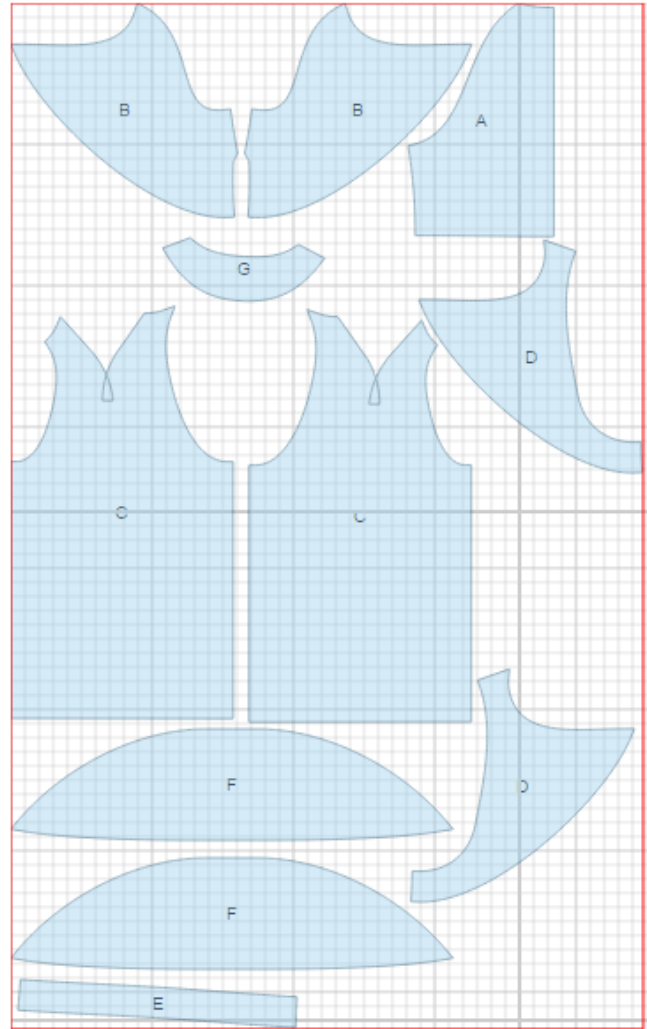
CUTTING:

Main fabric:

1. Back – cut 1 on fold (A)
2. Front - cut 2 (B)
3. Sleeve - cut 2 (C)
4. Front facing - cut 2 (D)
5. Back hem facing - cut 1 (E)
6. Collar - cut 2 (F)
7. Back neck facing - cut 1 (G)

Fusible interfacing:

1. Front facing - cut 2 (D)
2. Back neck facing - cut 1 (G)
3. Collar - cut 1 (F)
4. Back hem facing - cut 1 (E)



INSTRUCTIONS:

1. Apply fusible interfacing to listed pieces as well as to lower edge of sleeves.
2. Sew dart on sleeve. Cut bulk off to 1 cm and press open.
3. Sew darts on fronts. Press bulk up.
3. Sew back part of sleeve to back, press seam open. Sew front part of sleeve to front. Press seam open. Sew sleeve and side seam with one continuous stitch. Press seam open.
4. Sew outer collar into neckline. Sew front facing to back neck facing. Sew inner collar into neckline of facing. Press seams open.
5. Sew facing to back hem facing. Press seams open. Pin facing, right sides together, to garment., Sew along front edge, collar, and lower back edge. Trim seam in corners, turn right side out and straighten. Press facings under and press collar. Tack collar together along neckline connecting seam. Slipstitch hem facing to back.
6. Sew in shoulder pads.
7. Sew a hook and eye on inner and outer fronts.

TECHNICAL DRAWING:

