

S3067 Sewist 3067

Recommended fabrics: natural/mixed fabric suitable for skirts.

Seam allowances: all seams 3/8 inch, hem of skirt and lining 1 inch. Center back seam - 5/8 inch to allow for zipper installation.

Note on seam allowances:

- If the pattern has double contour the seam allowances are included.

- If the pattern has single contour, the seam allowances are NOT included and need to be added when laying out the pattern.

Note on length of fabric:

Attention! The amount of fabric needed for your pattern is not included. It will depend on the selected pattern size, the width, and design of the fabric you plan to use. You are welcome to use the Online Fabric Estimator to make calculations.

Alternatively, print all the paper patterns and lay them out at the width of fabric you plan to use (usually from 90 to 150 cm). Measure how much fabric you will need. Don't forget to account for pieces that need to be cut multiple times and pieces that are cut on the fold.



PRINTING:

Please use Adobe Reader software to open your PDF pattern. You can get Adobe Reader free of charge at this link - <https://get.adobe.com/reader/>.

Make sure you print your patterns at actual size (100%% scale or None) and on single sides of plain A4 paper. Verify that the print out size is to the correct scale by measuring the test square on the first page. The upper edge of the square features a centimeter scale, and the bottom edge features an inch scale.

Trim top and/or right margin of the pages where you see the scissors symbols. In the center of each page, the number of row and column is printed, separated by / sign. Construct layout pages according to these marks (for example, page marked 2/3 is in the second row and in the third column). Align pages using margins and tape or glue together.

CUTTING:

Note on cutting:

Lay out your pieces according to straight of grain as marked on the pattern pieces.

Some pieces will be cut on the fold, the corresponding edge will then be marked with a fold mark. Kindly pay attention to notes regarding type of fabric and quantity of required pieces on a block. For example, [Main, Interfacing - cut 1+1] on a pattern piece means that you need to cut 1 piece as is and 1 mirrored piece from the main fabric as well as from interfacing.

Make sure to mark all notches and other design features such as pleats etc. from the pattern piece onto your fabric. When sewing the garment, pay attention to notches, they must match up.

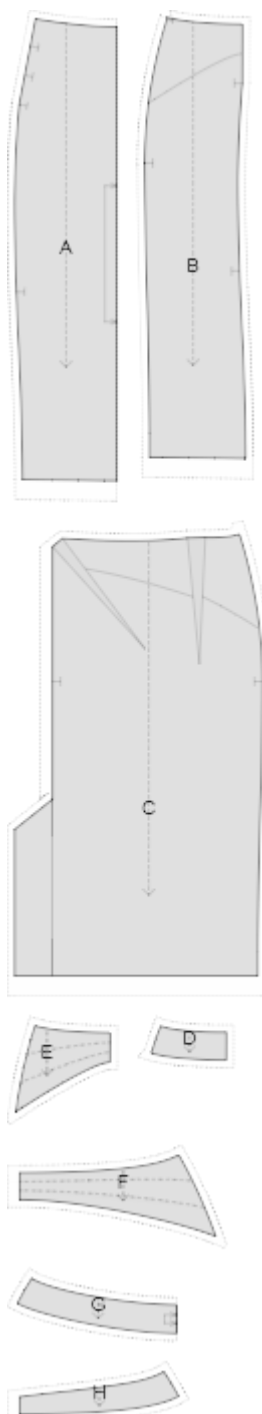
Self

- (A) Center Front - cut 1 on fold
- (B) Side Front - cut 1 +1
- (C) Back - cut 1 +1
- (D) Side Front Waistband - cut 1 +1
- (E) Side Front Inset - cut 1 +1
- (F) Back Inset - cut 1 +1
- (G) Front Facing - cut 1 on fold
- (H) Back Facing & Waistband - cut 2 +2

Interfacing

- (D) Side Front Waistband - cut 1 +1
- (G) Front Facing - cut 1 on fold
- (H) Back Facing & Waistband - cut 2 +2

* The capital letters in brackets correspond to pattern blocks as seen in Online Fabric Estimator and in pattern blocks preview on the right.



INSTRUCTIONS:

Apply fusible interfacing to Side Front Waistband, Back Waistband and Front and Back Facings.

1. Sew darts on Backs. Press bulk of the side dart towards center, and bulk of the diagonal dart towards bottom.
2. Pin lower edge of Back Inset onto back along the markings, right sides together, and sew. Grade seam, turn right side out and press.

Alternatively you may turn seam allowances on Back Inset under, pin or baste in place according to markings and sew close to the edge.

3. Baste together Back and Back Inset along center back, upper seam and side seams. Stitch decorative stitches along the markings. The resulting piece is referred to as Back in the future.

4. Pin Back Waistband onto Back from the right side, right sides together, and sew. Serge and press towards waistband.

5. Pin Lower edge of Front Inset onto Side Front along marked line, right sides together, and sew. Grade seam, turn right side out and press.

Alternatively you may press seam allowances on Front Inset under along lower edge, pin or baste in place according to markings and topstitch close to the edge.

6. Baste together seam allowances of Front Inset and Front along side seam, upper edge and princess seam. Stitch decorative stitches according to markings.

7. Pin Side Front Waistband onto Side Front from the right side, right sides together, and sew. Serge and press towards waistband. The resulting piece is referred to as Side Front in the future.

8. Sew Center Front to Side Fronts matching notches. Serge and press towards center.

9. Sew side seams, serge and press towards back.

10. Serge center back seams separately. Pin together Right Back and Left Back. Sew center back seam from notch for zipper down to vent corner. Press vent seam allowances to left side edge. Press right side of the vent at 1 cm and topstitch. Topstitch along vent marking. Press apart center back seam, including the slit for zipper. Sew in zipper.

11. Sew darts on Front Lining and on Back Linings.

12. Sew Front Facing to Front Lining, matching center front. Serge and press towards lining.

13. Sew Back Facing to Back Lining. Serge and press towards lining.

14. Serge side edges separately, sew side seams on waist facings, and press apart.

15. Serge center back seam on linings and facings separately. Sew back center seam on lining from notch to vent corner. Press apart, including the slit for zipper.

16. Pin waist facing with lining onto skirt from the right side, right sides together, and sew along waist. Turn facing onto the wrong side and press. Slip stitch seam allowances of facings and linings to zipper tape. Sew a hook and eye near waist on the back. Optionally stitch in the ditch along lower edge of waistband from the right side, connecting the two layers of the waistband.

17. Serge the hem on lining, turn under and topstitch. Attach seam allowances along vent on lining to self vent.

18. Hem the skirt by hand or machine as desired.

TECHNICAL DRAWING:

