

S3066 Sewist 3066

Recommended fabrics: natural/mixed fabrics suitable for skirts.

You will also need: zipper, hook and eye, fusible interfacing, lining.

This pencil skirt just below knee features multiple flattering insets.

Note on seam allowances:

- If the pattern has double contour the seam allowances are included.
- If the pattern has single contour, the seam allowances are NOT included and need to be added when laying out the pattern.

Note on length of fabric:

Attention! The amount of fabric needed for your pattern is not included. It will depend on the selected pattern size, the width, and design of the fabric you plan to use. You are welcome to use the Online Fabric Estimator to make calculations. Alternatively, print all the paper patterns and lay them out at the width of fabric you plan to use (usually from 90 to 150 cm). Measure how much fabric you will need. Don't forget to account for pieces that need to be cut multiple times and pieces that are cut on the fold.



PRINTING:

Please use Adobe Reader software to open your PDF pattern. You can get Adobe Reader free of charge at this link - <https://get.adobe.com/reader/>.

Make sure you print your patterns at actual size (100%% scale or None) and on single sides of plain A4 paper. Verify that the print out size is to the correct scale by measuring the test square on the first page. The upper edge of the square features a centimeter scale, and the bottom edge features an inch scale.

Trim top and/or right margin of the pages where you see the scissors symbols. In the center of each page, the number of row and column is printed, separated by / sign. Construct layout pages according to these marks (for example, page marked 2/3 is in the second row and in the third column). Align pages using margins and tape or glue together.

CUTTING:

Note on cutting:

Lay out your pieces according to straight of grain as marked on the pattern pieces.

Some pieces will be cut on the fold, the corresponding edge will then be marked with a fold mark. Kindly pay attention to notes regarding type of fabric and quantity of required pieces on a block. For example, [Main, Interfacing - cut 1+1] on a pattern piece means that you need to cut 1 piece as is and 1 mirrored piece from the main fabric as well as from interfacing.

Make sure to mark all notches and other design features such as pleats etc. from the pattern piece onto your fabric. When sewing the garment, pay attention to notches, they must match up.

Main 1

- (A) Center Front - cut 1 on fold
- (B) Center Back - cut 1 +1
- (I) Front Inset 4 - cut 1 +1
- (J) Back Inset 4 - cut 1 +1
- (K) Front Inset 5 - cut 1 +1
- (L) Back Inset 5 - cut 1 +1
- (Q) Front Facing - cut 1 on fold
- (R) Back Facing - cut 1 +1

Main 2

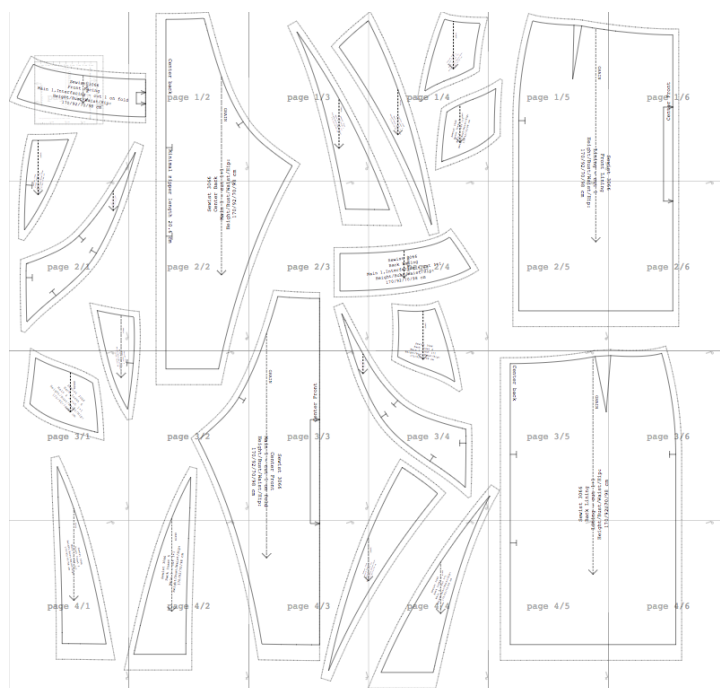
- (C) Front Inset 1 - cut 1 +1
- (D) Back Inset 1 - cut 1 +1

Main 3

- (E) Front Inset 2 - cut 1 +1
- (F) Back Inset 2 - cut 1 +1
- (G) Front Inset 3 - cut 1 +1
- (H) Back Inset 3 - cut 1 +1

Main 4

- (M) Front Inset 6 - cut 1 +1
- (N) Back Inset 6 - cut 1 +1
- (O) Front Inset 7 - cut 1 +1
- (P) Back Inset 7 - cut 1 +1



Interfacing

- (Q) Front Facing - cut 1 on fold
- (R) Back Facing - cut 1 +1

Lining

- (S) Front Lining - cut 1
- (T) Back Lining - cut 1 +1

* The capital letters in brackets correspond to pattern blocks as seen in Online Fabric Estimator and in pattern blocks preview on the right.

INSTRUCTIONS:

FRONT SKIRT

1. Sew Front Inset 4 to Front Inset 6. Serge and press towards bottom.
2. Sew these to Front Inset 3. Serge and press towards side.
3. Sew the resulting piece to Front Inset 1, matching the notch with the seam of Front Inset 3. Grade seam, serge and press towards bottom. The resulting piece is referred to as Side Front Inset in the future.
4. Sew Front Inset 5 to Front Inset 7. Serge and press towards side.
5. Sew side edge of Front Inset 2 to Front Inset 7. Serge and press towards side.
6. Sew lower side edge of Center Front to Front Inset 2. Serge and press towards side. The resulting piece is referred to as Center Front in the future.
7. Sew Side Front Inset to side edge of Center Front, matching notches. Grade seam, serge and press towards bottom.

* Repeat for both sides of the front skirt.

BACK SKIRT

1. Sew Back Inset 4 to Back Inset 6. Serge and press towards bottom.
2. Sew these to Back Inset 3. Serge and press towards side.
3. Sew the resulting piece to Back Inset 1, matching the notch with the seam of Back Inset 3. Grade seam, serge and press towards bottom. The resulting piece is referred to as Side Back Inset in the future.
4. Sew Back Inset 5 to Back Inset 7. Serge and press towards side.

5. Sew side edge of Back Inset 2 to Back Inset 7. Serge and press towards side.
6. Sew lower side edge of Center Back to Back Inset 2. Serge and press towards side. The resulting piece is referred to as Center Back in the future.
7. Sew Side Back Inset to side edge of Center Back, matching notches. Grade seam, serge and press towards bottom.

* Repeat for both sides of the front skirt.

SKIRT

1. Sew side seams, serge and press towards back.
2. Serge center back edges separately. Serge seam allowances of the vents separately. Pin together Right Back and Left Back. Sew center back seam from notch for zipper down to vent corner. Press vent seam allowances to left side edge. Press right side of the vent at 1 cm and topstitch. Topstitch along vent marking. Press apart center back seam, including the slit for zipper. Sew in zipper.
3. Apply fusible interfacing to Front Facing and Back Facings.
4. Sew darts on Front Lining and on Back Linings.
5. Sew Front Facing to Front Lining, matching center front. Serge and press towards lining.
6. Sew Back Facing to Back Lining. Serge and press towards lining.
7. Serge side edges separately, sew side seams on waist facings, and press apart.
8. Serge center back seam on linings and facings separately. Sew back center seam on lining from notch to vent corner. Press apart, including the slit for zipper.
9. Serge the hem on lining, turn under and topstitch. Attach seam allowances along vent on lining to self vent.
10. Pin waist facing with lining onto skirt from the right side, right sides together, and sew along waist. Turn facing onto the wrong side and press. Slip stitch seam allowances of facings and linings to zipper tape. Sew a hook and eye near waist on the back.
11. Hem the skirt by hand or machine as desired.

TECHNICAL DRAWING:

