

Recommendations on fabric: natural/mixed fabric suitable for coats.

You will also need: lining, fusible interfacing, 1 big button, 3 buttons for closure.

Seam allowances: pocket opening edges - 2.5 cm, hem of coat – 3.0 cm, other seams – 1 cm.

Note on seam allowances:

- If the pattern has double contour the seam allowances are included. They are 1 cm unless specified otherwise.
- If the pattern has single contour, the seam allowances are NOT included and need to be added when laying out the pattern.

Note on length of fabric:

Attention! The amount of fabric needed for your pattern is not included. It will depend on the selected pattern size, the width, and design of the fabric you plan to use. First, print all the paper patterns and lay them out at the width of fabric you plan to use (usually from 90 to 150 cm). Measure how much fabric you will need. Don't forget to account for pieces that need to be cut multiple times and pieces that are cut on the fold.



CUTTING:

Main fabric:

1. Back – cut 2 (A)
2. Front – cut 2 (B)
3. Front facing – cut 2 (C)
4. Back neck facing - cut 2 (D)
5. Upper sleeve – cut 2 (E)
6. Lower sleeve – cut 2 (F)
7. Belt – cut 1 (G)
8. Collar – cut 2 (H)
9. Pocket – cut 2 (I)

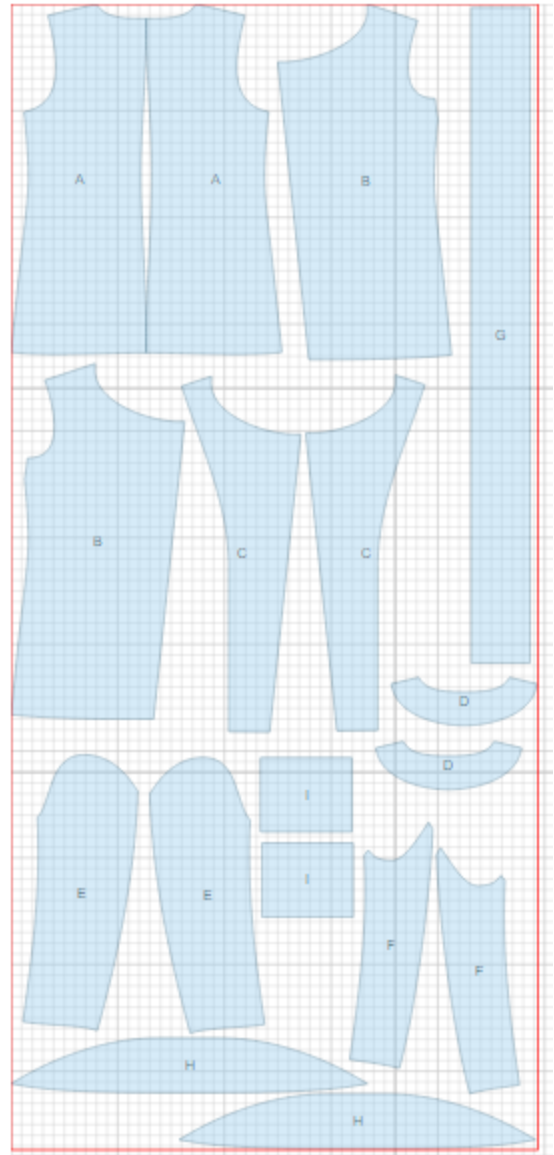
Lining:

1. Back – cut 2 (A)
2. Front – cut 2 (B)
3. Upper sleeve – cut 2 (E)
4. Lower sleeve – cut 2 (F)

*ATTENTION: Lining is cut using main fabric patterns excluding the width of front facing. Add a pleat on lining.

Fusible interfacing:

1. Front facing - cut 2 (C)
2. Collar - cut 1 (H)
3. Back neck facing - cut 1 (D)



INSTRUCTIONS:

1. Apply fusible interfacing to listed pieces.
2. Sew darts on fronts, press bulk downwards.
3. Serge pockets on all sides. Turn pocket opening under and topstitch. Press other edges under. Place pocket on front according to marking and topstitch on three sides.
4. Sew side and shoulder seams. Press seams open.
5. Make inner buttonholes on right front facing. Sew shoulder seams of front and neck facings. Press seams open.
6. Place collars right sides together and sew outer edge. Start and finish stitch exactly at marked line of collar connection. Turn collar right side out, straighten and press.
7. Pin front facings to front, right sides together, and sew along front edge. Turn front facings right side out and straighten seams.
8. Sew outer collar into neckline and inner collar into front/ back neckline. Press connection seams open and baste close to seams.
9. Sew and press open elbow and front sleeve seams. Make a gathering stitch along sleeve cap to adjust ease. Sew sleeves into armholes matching notches and adjusting ease on sleeve cap.
10. Sew lining together leaving an opening in left front sleeve seam.
11. Sew lining to inner edges of front facings and to back neck facing.
12. Sew lining to lower edge of sleeves and to hem of coat. Turn coat right side out through the opening in sleeve. Sew opening closed.
13. Fold belt in half lengthwise and sew short and long sides, leaving an opening for turning. Clip seams in corners. Turn belt right side out and press. Sew opening closed.
14. Make outer buttonhole. Sew buttons according to marks.

TECHNICAL DRAWING:

