

Recommendations on fabric: natural/mixed heavy-weight double-sided suiting fabric.

You will also need: fusible interfacing.

Seam allowances: hem and upper edge of pocket - 3.0 cm, other seams - 1.0 cm.

Note on seam allowances:

- If the pattern has double contour the seam allowances are included. They are 1 cm unless specified otherwise.
- If the pattern has single contour, the seam allowances are NOT included and need to be added when laying out the pattern.

Note on length of fabric:

Attention! The amount of fabric needed for your pattern is not included. It will depend on the selected pattern size, the width, and design of the fabric you plan to use. First, print all the paper patterns and lay them out at the width of fabric you plan to use (usually from 90 to 150 cm). Measure how much fabric you will need. Don't forget to account for pieces that need to be cut multiple times and pieces that are cut on the fold.



CUTTING:

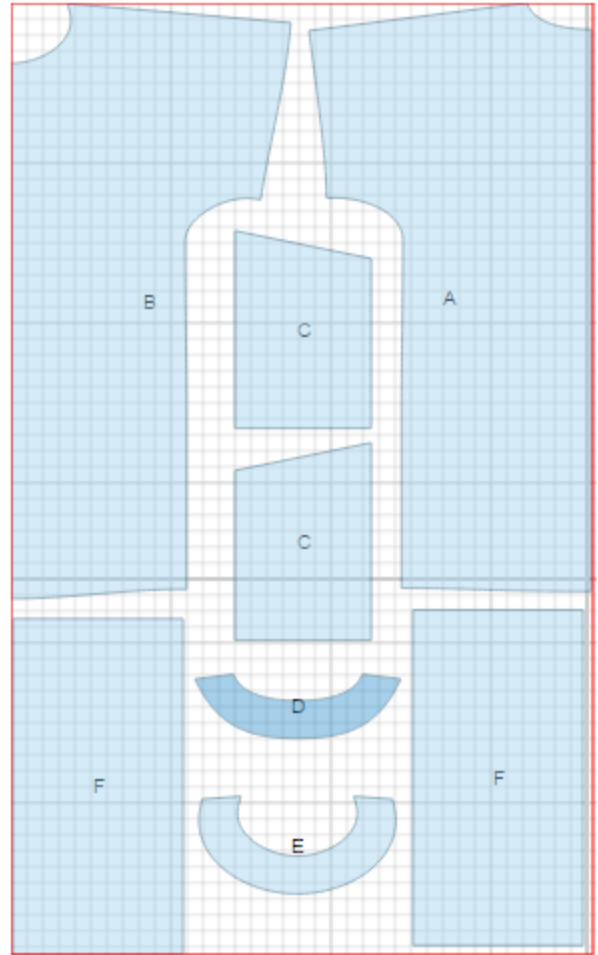
Main fabric:

1. Back - cut 1 on fold (A)
2. Front - cut 1 on fold (B)
3. Pocket - cut 2 (C)
4. Back neck facing - cut 1 (D)
5. Front neck facing - cut 1 (E)
6. Sleeve - cut 2 (F)

Fusible interfacing:

1. Back neck facing - cut 1 (D)
2. Front neck facing - cut 1 (E)

1.



INSTRUCTIONS:

1. Apply fusible interfacing to listed pieces.
2. Apply fusible interfacing to upper edge of pocket and press under at 1 cm. Unfold and turn upper edge to right side and sew on side edges. Turn right side out, straighten corners. Press side and lower edges under. Topstitch upper edge at 2.5 cm. Topstitch pocket on front according to marking.
3. Sew shoulder seams. Serge and press seams towards back.
4. Sew sleeve to dress. Serge and press seam towards sleeve.
5. Sew side and sleeve seam with one continuous stitch. Serge and press seams towards back.
6. Sew shoulder seams of facings and press open. Serge outer edge. Pin facing to neckline right sides together and sew. Trim seam, turn facing to inside and press.
7. Press lower edge of sleeve twice towards right side according to marking. Slip-stitch fold to sleeve.
8. Serge lower edge of dress, fold under, press and slip-stitch.

TECHNICAL DRAWING:

