

Recommendations on fabric: natural/mixed fabric of two colours.

You will also need: fusible interfacing, invisible zipper, 2 buttons.

Seam allowances: hem - 2.0 cm, lower edge of sleeve - 1.5 cm, other seams - 1.0 cm.

**Note on seam allowances:**

- If the pattern has double contour the seam allowances are included. They are 1 cm unless specified otherwise.
- If the pattern has single contour, the seam allowances are NOT included and need to be added when laying out the pattern.

**Note on length of fabric:**

*Attention! The amount of fabric needed for your pattern is not included. It will depend on the selected pattern size, the width, and design of the fabric you plan to use. First, print all the paper patterns and lay them out at the width of fabric you plan to use (usually from 90 to 150 cm). Measure how much fabric you will need. Don't forget to account for pieces that need to be cut multiple times and pieces that are cut on the fold.*



## CUTTING:

### Main fabric:

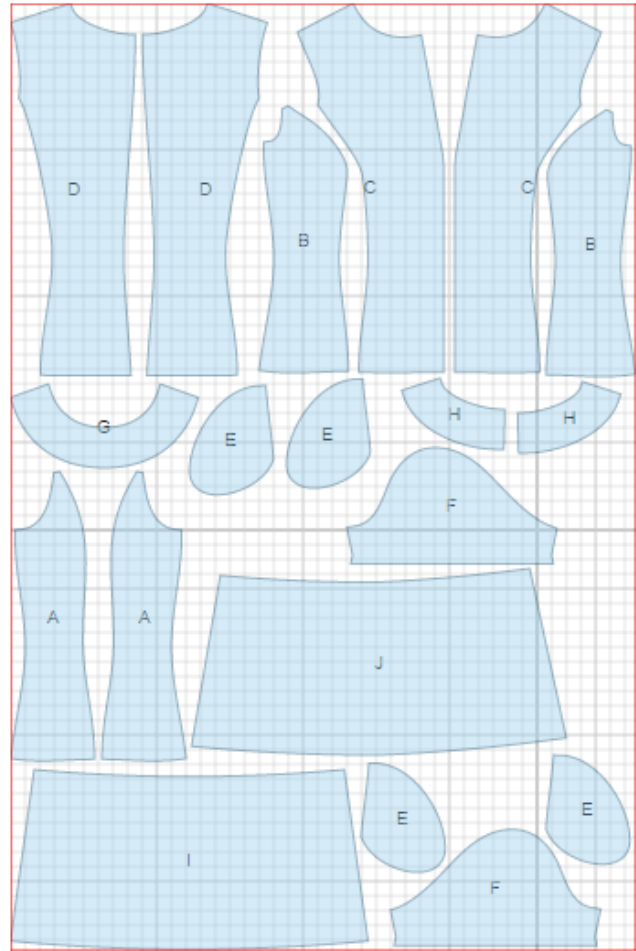
1. Side back - cut 2 (A)
2. Side front - cut 2 (B)
3. Center front - cut 2 (C)
4. Center back - cut 2 (D)
5. Pocket bag - cut 4 (E)
6. Sleeve - cut 2 (F)
7. Front neck facing - cut 1 (G)
8. Back neck facing - cut 2 (H)

### Contrast fabric:

1. Lower front - cut 1 (I)
2. Lower back - cut 1 (J)

### Fusible interfacing:

1. Back neck facing - cut 1 (H)
2. Front neck facing - cut 1 (G)



1.

---

**INSTRUCTIONS:**

1. Apply fusible interfacing to neck facings.
2. Sew side backs to center backs. Serge and press seams towards center. Serge separately center back edges. Sew center back seam from zipper mark down. Press seam open pressing slit for zipper. Install zipper. Sew lower back piece to back. Serge and press seam upwards.
3. Sew dart on each center front. Press bulk upwards. Sew center front seam. Serge and press seam towards left side.
4. Lay pocket bags on right side of center and side fronts and sew. Serge seam on side piece. Sew side fronts to center front sewing edges of pocket bags with one continuous stitch. Serge and press seams towards center. Sew lower front piece to front. Serge and press seam upwards.
5. Sew shoulder and side seams. Serge and press seams towards back.
6. Sew shoulder seams of facings and press open. Serge outer edge. Pin facing to neckline right sides together and sew. Trim seam, turn facing to inside and press. Tack facing to shoulder seams and zipper tape.
7. Sew sleeve seam. Serge and press seam towards back. Make a gathering stitch along sleeve cap to adjust ease. Sew sleeves in matching notches and adjusting ease on sleeve cap. Serge seams.
8. Serge lower edge of dress and of sleeves, fold under, press and topstitch. Sew decorative buttons on front pockets.

TECHNICAL DRAWING:

