

Recommendations on fabric: natural/mixed fabric suitable for dresses.

You will also need: fusible interfacing; invisible zipper, 2 buttons.

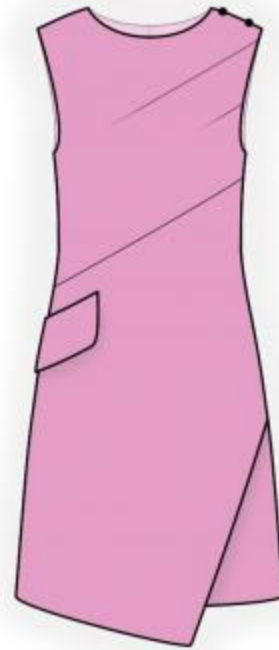
Seam allowances: along upper and lower edges of overlay piece - 2.0 cm, hem - 2.0 cm, other seams - 1.0 cm.

Note on seam allowances:

- If the pattern has double contour the seam allowances are included. They are 1 cm unless specified otherwise.
- If the pattern has single contour, the seam allowances are NOT included and need to be added when laying out the pattern.

Note on length of fabric:

Attention! The amount of fabric needed for your pattern is not included. It will depend on the selected pattern size, the width, and design of the fabric you plan to use. First, print all the paper patterns and lay them out at the width of fabric you plan to use (usually from 90 to 150 cm). Measure how much fabric you will need. Don't forget to account for pieces that need to be cut multiple times and pieces that are cut on the fold.



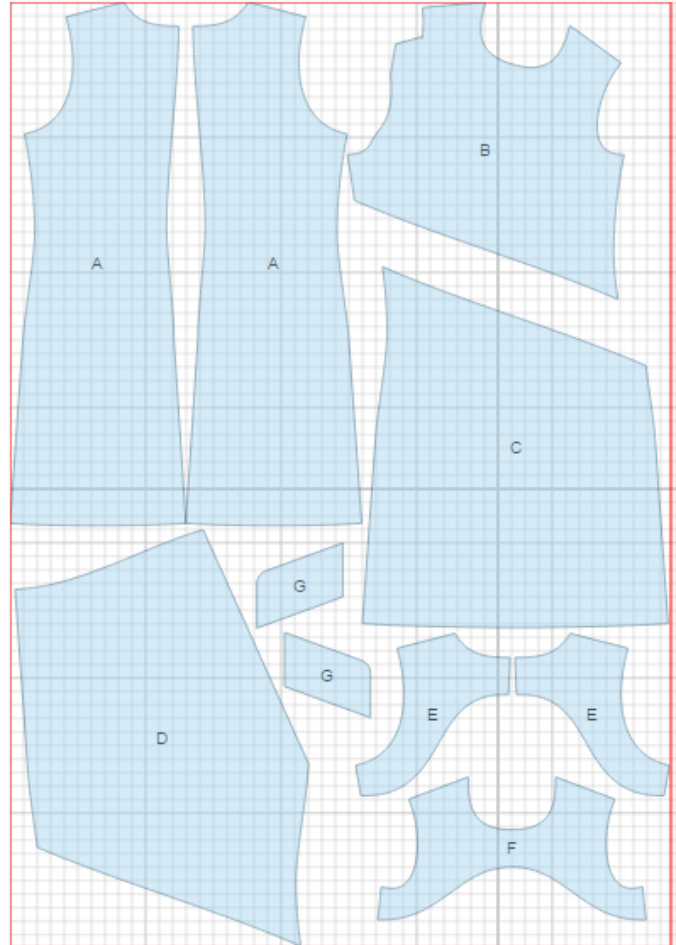
CUTTING:

Main fabric:

1. Back - cut 2 (A)
2. Upper front - cut 1 (B)
3. Lower front - cut 1 (C)
4. Front overlay - cut 1 (D)
5. Back facing - cut 2 (E)
6. Front facing - cut 1 (F)
7. Flap - cut 2 (G)

Fusible interfacing:

1. Back facing - cut 2 (E)
2. Front facing - cut 1 (F)
3. Flap - cut 1 (G)



INSTRUCTIONS:

1. Apply fusible interfacing to facings and flap.
2. Sew darts on front, cut bulk off of 1 cm , if desired, and press upwards.
3. Serge separately center back edges. Sew center back seam from zipper mark down to hem, press seam open. Install zipper.
4. Place flaps right sides together and sew on three sides. Trim seams, turn flap right side out, straighten and press. Serge upper edge. Sew flap to overlay front piece, turn it down and topstitch along connecting seam.
5. Serge upper edge of overlay piece, fold to wrong side, press and topstitch. Serge lower edge of overlay piece, fold to wrong side, press and topstitch. Place overlay piece on lower front and pin on upper and side edges. Then sew as one piece.
6. Sew upper front to lower front, serge and press seam upwards.
7. Sew side and shoulder seams. Serge and press seams towards back.
8. Sew shoulder seams of facings. Press seams open. Serge lower edge. Pin facing to dress right sides together and sew. Trim seams, turn facing to inside and press. Sew armhole in two steps: first front side, then back side of armhole.
9. Serge lower edge of dress, fold under, press and topstitch.
10. Sew decorative buttons to shoulder seam.

TECHNICAL DRAWING:

