

Recommendations on fabric: natural/mixed fabric suitable for dresses.

You will also need: fusible interfacing; invisible zipper.

Seam allowances: hem - 2.0 cm, lower edge of sleeve - 1.2 cm, other seams - 1.0 cm.

Note on seam allowances:

- If the pattern has double contour the seam allowances are included. They are 1 cm unless specified otherwise.

- If the pattern has single contour, the seam allowances are NOT included and need to be added when laying out the pattern.

Note on length of fabric:

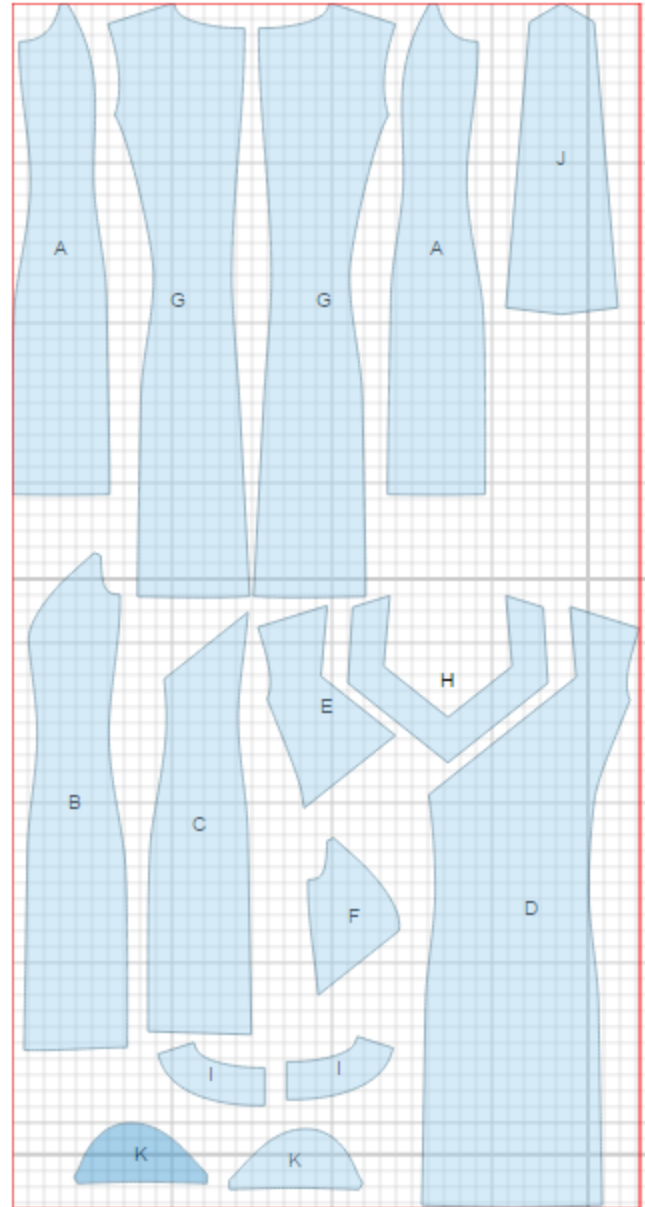
Attention! The amount of fabric needed for your pattern is not included. It will depend on the selected pattern size, the width, and design of the fabric you plan to use. First, print all the paper patterns and lay them out at the width of fabric you plan to use (usually from 90 to 150 cm). Measure how much fabric you will need. Don't forget to account for pieces that need to be cut multiple times and pieces that are cut on the fold.



CUTTING:

Main fabric:

1. Side back - cut 2 (A)
2. Right side front - cut 1 (B)
3. Left side front - cut 1 (C)
4. Center front - cut 1 (D)
5. Center upper front - cut 1 (E)
6. Upper left front - cut 1 (F)
7. Center front - cut 2 (G)
8. Front neck facing - cut 1 (H)
9. Back neck facing - cut 2 (I)
10. Lapel - cut 1 (J)
11. Sleeve - cut 2 (K)



Fusible interfacing:

1. Back neck facing - cut 2 (H)
2. Front neck facing - cut 1 (I)
3. Lapel - cut 1 (J)

INSTRUCTIONS:

1. Apply fusible interfacing to listed pieces.
2. Sew side backs to center backs. Serge and press seams towards center.
3. Serge separately center back edges. Sew center back seam from zipper mark down to hem, press seam open. Install zipper.
4. Sew side fronts to center front. Serge and press seams towards center. Sew center upper front to left upper front. Serge and press seam towards center.
5. Fold lapel in half right sides together and sew long side. Trim seam in corner, turn lapel right side out and press.
6. Place upper front piece on right side of center piece inserting lapel between them. Sew. Press seam downwards. Serge seam leaving 2.0 cm to center corner. Baste side edge of lapel to side edge of dress.
7. Sew side and shoulder seams. Serge and press seams towards back.
8. Sew shoulder seams of facings. Press seams open. Serge outer edge. Pin facing to dress right sides together and sew. Trim seams, clip in corners, turn facing to inside and press.
9. Serge lower edge of sleeve. Turn under and topstitch. Sew sleeves into armholes. Serge and press seams.
10. Cut a bias tape of 4 cm. Length is equal to lower part of armhole + 6 cm. Fold bias tape in half lengthwise right side out and press. Place bias tape on armhole from right side leaving tails, and sew. Turn bias tape to inside, clip into seam and topstitch along the fold. Press seam.
11. Serge lower edge of dress, fold under, press and topstitch.

TECHNICAL DRAWING:

