

Recommendations on fabric: natural/mixed fabric suitable for dresses. Top could be a matching or coordinating lightweight fabric.

You will also need: fusible interfacing; lining; invisible zipper.

Seam allowances: hem of dress and lower edge of sleeve - 2.0 cm, other seams - 1.0 cm.

Note on seam allowances:

- If the pattern has double contour the seam allowances are included. They are 1 cm unless specified otherwise.
- If the pattern has single contour, the seam allowances are NOT included and need to be added when laying out the pattern.

Note on length of fabric:

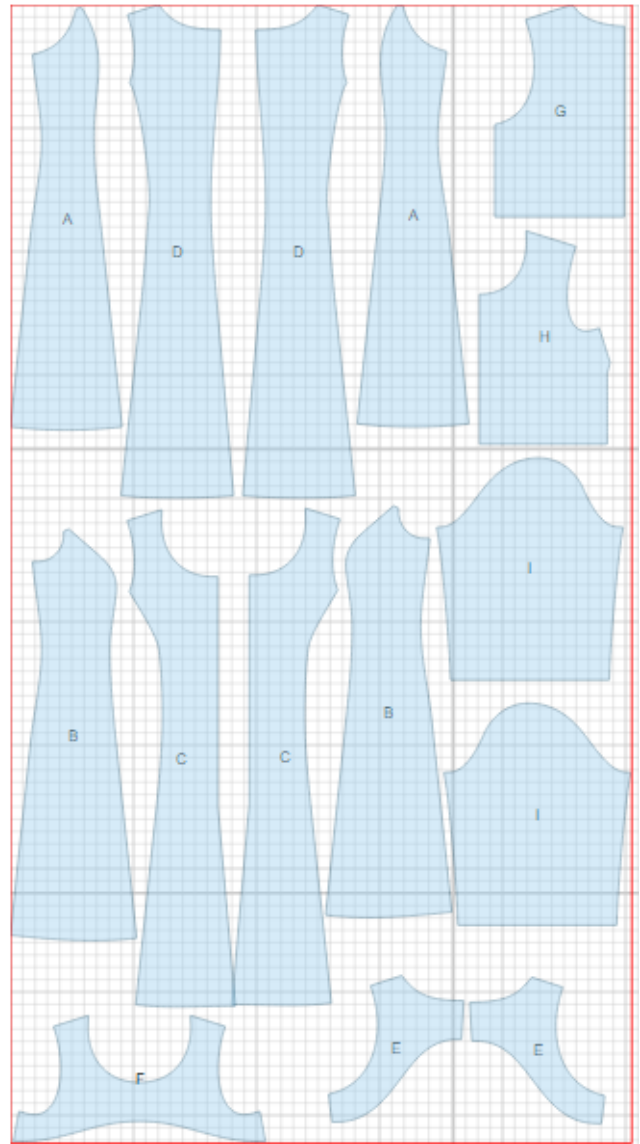
Attention! The amount of fabric needed for your pattern is not included. It will depend on the selected pattern size, the width, and design of the fabric you plan to use. First, print all the paper patterns and lay them out at the width of fabric you plan to use (usually from 90 to 150 cm). Measure how much fabric you will need. Don't forget to account for pieces that need to be cut multiple times and pieces that are cut on the fold.



CUTTING:

Main fabric:

1. Side back - cut 2 (A)
2. Side front - cut 2 (B)
3. Center front - cut 2 (C)
4. Center back - cut 2 (D)
5. Back facing - cut 2 (E)
6. Front facing - cut 1 (F)
7. Back of top - cut 1 on fold (G)
8. Front of top - cut 1 on fold (H)
9. Sleeve - cut 2 (I)



Fusible interfacing:

1. Back facing - cut 2 (E)
2. Front facing - cut 1 (F)

Lining:

1. Back of top - cut 1 on fold (G)
2. Front of top - cut 1 on fold (H)

INSTRUCTIONS:

Dress:

1. Apply fusible interfacing to facings.
2. Sew side backs to center backs. Serge and press seams towards center.
3. Serge separately center back edges. Sew center back seam from zipper mark down to hem, press seam open. Install zipper.
4. Sew center front seam. Press seam open. Sew side fronts to center front. Serge and press seams towards center.
5. Sew side and shoulder seams. Serge and press seams towards back.
8. Sew shoulder seams of facings. Press seams open. Serge lower edge. Pin facing and dress right sides together and sew. Trim seams, turn facing to inside and press. Sew armhole in two steps: first front side, then back side of armhole.
9. Serge lower edge of dress, fold under, press and topstitch.

Top:

1. Sew darts on front, press bulk upwards.
2. Sew side and shoulder seams. Press seams open.
3. Sew side and shoulder seams on lining pieces. Press seams open.
4. Place lining and top right sides together and sew neckline and lower edge. Clip seam on curves, turn top right side out, straighten and press. Baste lining and fabric together along armholes..
5. Sew sleeve seam, serge and press towards back. Make a gathering stitch along sleeve cap for adjusting ease. Sew sleeves in matching notches and adjusting ease. Serge and press seams.
6. Serge lower edge of sleeve, fold under, press and topstitch.

TECHNICAL DRAWING:

