

Recommendations on fabric: natural/mixed fabric suitable for dresses.

You will also need: fusible interfacing; 1 button.

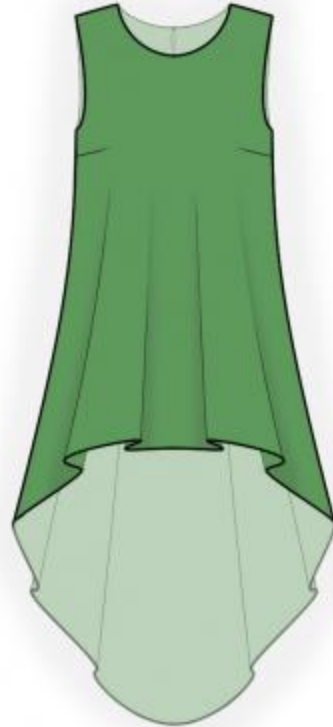
Seam allowances: all seams - 1.0 cm.

Note on seam allowances:

- If the pattern has double contour the seam allowances are included. They are 1 cm unless specified otherwise.
- If the pattern has single contour, the seam allowances are NOT included and need to be added when laying out the pattern.

Note on length of fabric:

Attention! The amount of fabric needed for your pattern is not included. It will depend on the selected pattern size, the width, and design of the fabric you plan to use. First, print all the paper patterns and lay them out at the width of fabric you plan to use (usually from 90 to 150 cm). Measure how much fabric you will need. Don't forget to account for pieces that need to be cut multiple times and pieces that are cut on the fold.



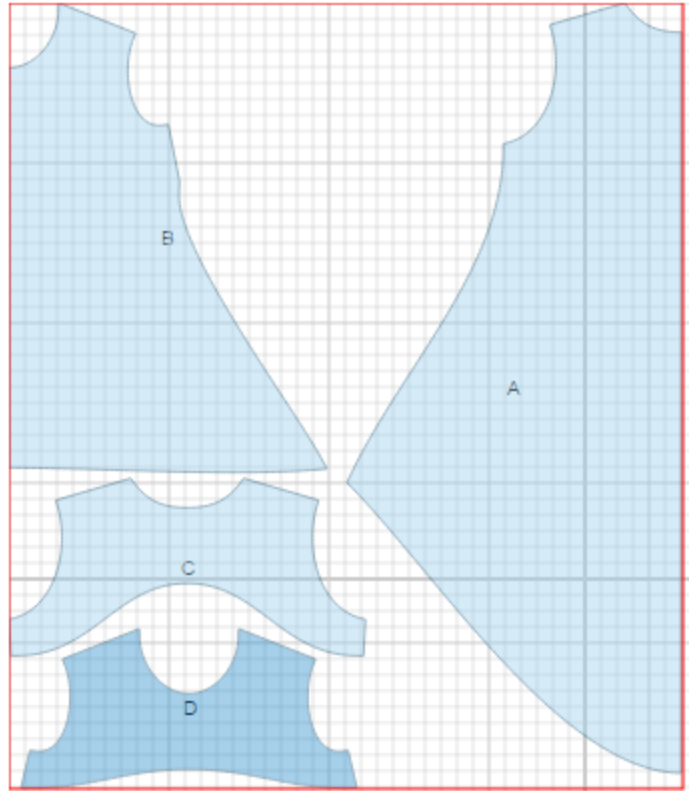
CUTTING:

Main fabric:

1. Back - cut 1 on fold (A)
2. Front - cut 1 on fold (B)
3. Back facing - cut 1 (C)
4. Front facing - cut 1 (D)

Fusible interfacing:

1. Back facing - cut 1 (C)
2. Front facing - cut 1 (D)



INSTRUCTIONS:

1. Apply fusible interfacing to facings.
2. Sew darts on front, press bulk upwards.
3. Sew shoulder seams. Press seams open. Sew side seams. Serge and press seams towards back.
4. Sew shoulder and side seams of facings. Press seams open. Serge lower edge. Pin facing and dress right sides together and sew along neckline.
5. Cut a bias tape of 2.5 cm wide and 5 cm long for a button loop. Fold bias tape in half along center line right sides together and sew at 0.3 cm from the fold. Grade seam, turn bias tape right side out and straighten. Adjust loop length.
6. For the button closure: make a cut on center back facing/back from top to mark. Insert the loop in the upper corner under the neckline stitches. Sew closely on either side of cut, sewing over button loop ends as well. Come to a point at the bottom of the line. Reinforce the stitches at the point. Trim the neckline seam. Turn facing toward the inside and press. Finish armhole with facing in two steps: first the front side of armhole, then the back side.
7. Serge lower edge of dress, fold under, press and topstitch. Sew on button.

TECHNICAL DRAWING:

