

Recommendations on fabric: light-weight natural/mixed suiting fabric.

You will also need: fusible interfacing; lining; 2 snaps.

Seam allowances: hem - 3.0 cm, other seams - 1.0 cm.

**Note on seam allowances:**

- If the pattern has double contour the seam allowances are included. They are 1 cm unless specified otherwise.
- If the pattern has single contour, the seam allowances are NOT included and need to be added when laying out the pattern.

**Note on length of fabric:**

*Attention! The amount of fabric needed for your pattern is not included. It will depend on the selected pattern size, the width, and design of the fabric you plan to use. First, print all the paper patterns and lay them out at the width of fabric you plan to use (usually from 90 to 150 cm). Measure how much fabric you will need. Don't forget to account for pieces that need to be cut multiple times and pieces that are cut on the fold.*



## CUTTING:

### Main fabric:

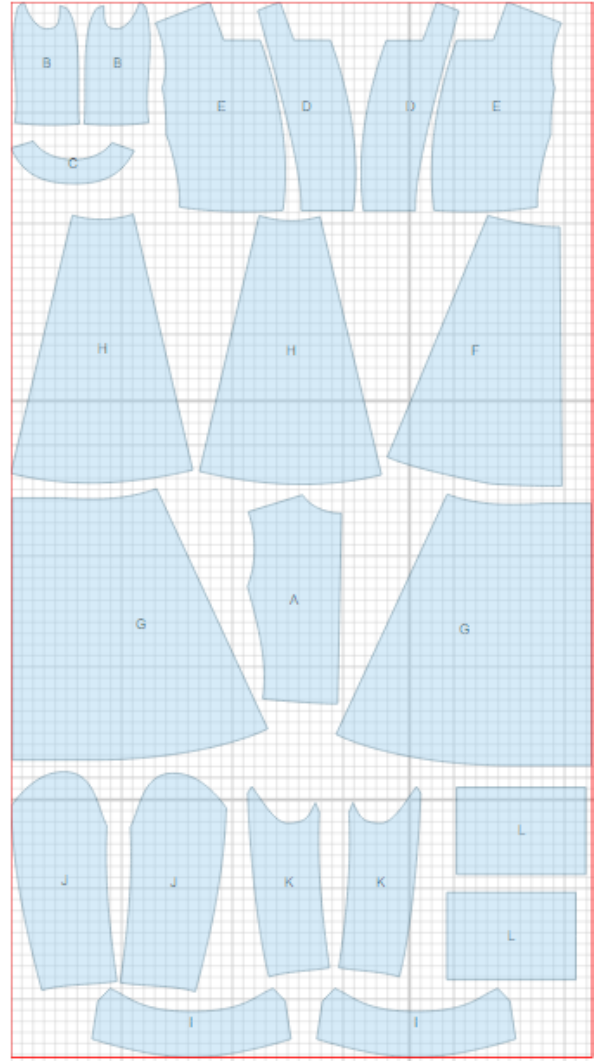
1. Upper back - cut 1 on fold (A)
2. Upper side - cut 2 (B)
3. Back neck facing - cut 1 (C)
4. Front facing - cut 2 (D)
5. Upper front - cut 2 (E)
6. Lower back - cut 1 on fold (F)
7. Lower front - cut 2 (G)
8. Lower side - cut 2 (H)
9. Collar - cut 2 (I)
10. Upper sleeve - cut 2 (J)
11. Lower sleeve - cut 2 (K)
12. Cuff - cut 2 (L)

### Lining:

1. Upper back - cut 1 on fold (A)
2. Upper side - cut 2 (B)
3. Upper front - cut 2 (E)
4. Lower side - cut 2 (H)
5. Lower front - cut 2 (G)
6. Lower back - cut 1 on fold (F)
7. Upper sleeve - cut 2 (J)
8. Lower sleeve - cut 2 (K)

### Fusible interfacing:

1. Collar - cut 2 (I)
2. Front facing - cut 2 (D)
3. Back neck facing - cut 1 (C)
4. Cuff - cut 2 (L)



Note: Lining pieces are cut excluding the width of neck and center front facings.

---

**INSTRUCTIONS:**

1. Sew upper side to upper back. Press seam open.
2. Sew darts on upper fronts, press bulk downwards. Sew upper side fronts to upper front, press seams open.
3. Sew side and shoulder seams of bodice. Press seams open.
4. Sew shoulder seams of front facings and back neck facing. Press seams open.
5. Pin inner and outer collars right sides together and sew outer edge and ends. Start and finish stitch exactly at marked line of collar connection. Trim seam in corners, clip at mark. Turn collar right side out, straighten and press.
6. Pin front facing to front right sides together, and sew along center front. Sew up to the notch where collar is connected. Trim seams in corners. Turn front facings right side out, straighten seams.
7. Sew inner collar into neckline and outer collar into facing neckline. Press seams open and fasten together close to seams.
8. Sew lower side to lower back, press seam open. Sew lower side to lower front, press seam open.
9. Sew bodice to skirt, press seam towards bodice.
10. Sew elbow and front sleeve seam and press open. Make a gathering stitch along sleeve cap to adjust ease. Sew sleeve into armhole matching notches and adjusting ease on sleeve cap.
11. Fold cuff in half lengthwise, right sides together, and sew sides from fold to mark. Trim seam in corners, clip at mark. Fold cuff into ring, and sew sections from mark to the edge. Turn cuff right side out, straighten and press. Pin cuff on sleeve, match cuff seam with mark, and sew to lower edge of sleeve. Straighten and press cuff.
12. Sew lining together and sew in lining sleeves. Leave an opening in front left sleeve seam for turning.
13. Sew lining to inner edges of front facings and back neck facing.
14. Sew lining to lower edge of dress. Fold sleeve lining under and slipstitch to cuff. Turn dress right side out through the opening in sleeve. Sew opening closed.

15. Install snaps according to marks.

**TECHNICAL DRAWING:**

