

Recommendations on fabric: heavy-weight natural or mixed light to medium stretch-knit fabric.

You will also need: fusible interfacing, 2 buttons, 1 dress zipper.

Seam allowances: hem – 2.0 cm, lower edge of sleeve - 2.0 cm, flap outer edge - 0.5 cm, flap connection edge - 2.0 cm, other seams – 1.0 cm.

Note on seam allowances:

- If the pattern has double contour the seam allowances are included. They are 1 cm unless specified otherwise.
- If the pattern has single contour, the seam allowances are NOT included and need to be added when laying out the pattern.

Note on length of fabric:

Attention! The amount of fabric needed for your pattern is not included. It will depend on the selected pattern size, the width, and design of the fabric you plan to use. First, print all the paper patterns and lay them out at the width of fabric you plan to use (usually from 90 to 150 cm). Measure how much fabric you will need. Don't forget to account for pieces that need to be cut multiple times and pieces that are cut on the fold.



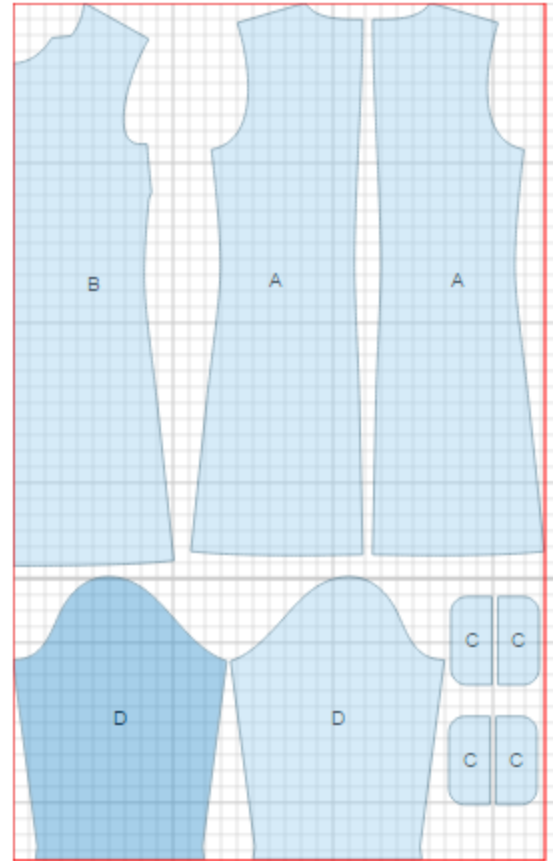
CUTTING:

Main fabric:

1. Back - cut 2 (A)
2. Front - cut 1 on fold (B)
3. Flap - cut 4 (C)
4. Sleeve - cut 2 (D)

Fusible interfacing:

1. Flap - cut 2 (C)



Advice: Knit fabric pieces are sewn together with special elastic or narrow zig-zag stitch. Seam allowance on hem is stitched with twin needles to save stretchiness. Pieces can also be sewn together with 3 or 4 – thread serger. When serging, cut seam allowances to 0.6 – 0.8 cm.

INSTRUCTIONS:

1. Apply fusible interfacing to outer flaps.
2. Serge center back seam edges separately. Sew center back seam from end of zipper length to hem.. Press seam open, including opening for zipper. Install zipper.
3. Sew darts on front. Press bust darts downwards, neck darts - towards center.
4. Sew shoulder seams. Serge and press seams towards back.
5. Cut a bias tape of 4 cm wide. Length is equal to neckline + 5 cm. Fold bias tape in half lengthwise wrong sides together and press. Pin bias tape to neckline from right side and sew. Clip into seam. Turn bias tape to the inside and topstitch along the fold. Press seam.
6. Sew sleeves into open armholes. Serge and press seams towards sleeve.
7. Sew side and sleeve seams with one continuous stitch. Serge and press seams towards back.
8. Place flaps right sides together and sew along outer (shaped) edge. Turn flaps right side out and press. Topstitch flap and serge straight edge. Pin flap to front according to marking. With shaped edge directed towards center, sew serged edge to dress. Turn flap towards side seams and make decorative stitch at 1 cm from fold.. Sew buttons.
9. Serge lower edge of dress and sleeves, fold to wrong side, press and topstitch.

TECHNICAL DRAWING:

