

Recommendations on fabric: natural or mixed dress fabric.

You will also need: fusible interfacing, invisible zipper.

Seam allowances: hem – 2.0 cm, lower edge of sleeve - 2.0 cm, other seams – 1.0 cm.

Note on seam allowances:

- If the pattern has double contour the seam allowances are included. They are 1 cm unless specified otherwise.
- If the pattern has single contour, the seam allowances are NOT included and need to be added when laying out the pattern.

Note on length of fabric:

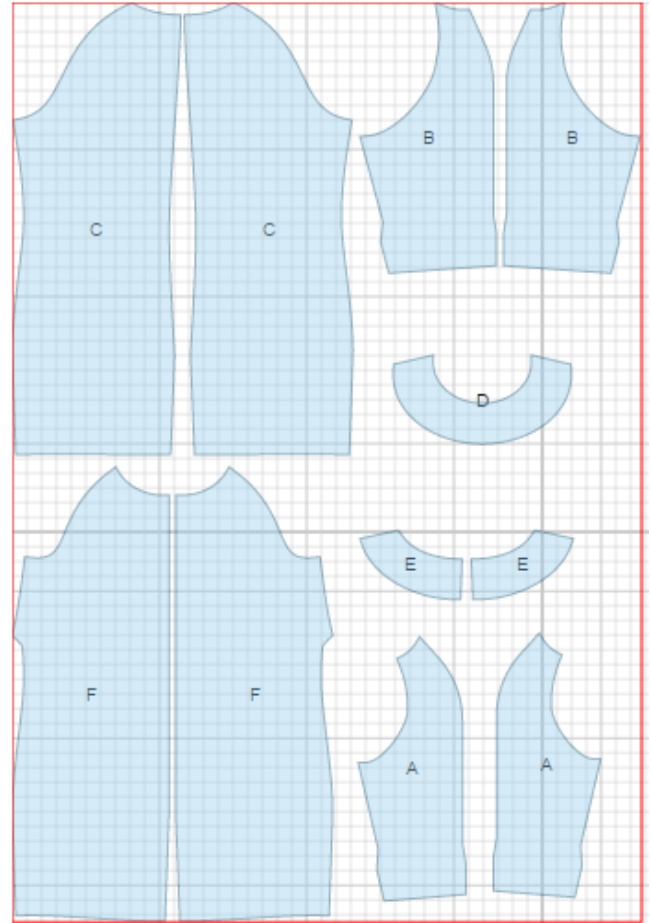
Attention! The amount of fabric needed for your pattern is not included. It will depend on the selected pattern size, the width, and design of the fabric you plan to use. First, print all the paper patterns and lay them out at the width of fabric you plan to use (usually from 90 to 150 cm). Measure how much fabric you will need. Don't forget to account for pieces that need to be cut multiple times and pieces that are cut on the fold.



CUTTING:

Main fabric:

1. Front sleeve - cut 2 (A)
2. Back sleeve - cut 1 (B)
3. Back - cut 2 (C)
4. Front neck facing - cut 1 (D)
5. Back neck facing - cut 2 (E)
6. Front - cut 2 (F)



Fusible interfacing:

1. Front neck facing - cut 1 (D)
2. Back neck facing - cut 2 (E)

INSTRUCTIONS:

1. Apply fusible interfacing to neck facings.
2. Serge separately back center edges. Sew center back seam from zipper mark down to hem. Press seam open. Install zipper.
3. Sew center front seam. Serge and press seam towards left side.
4. Sew front sleeves to front and back sleeves to back. Serge seams.
5. Sew upper sleeve seams. Serge and press seams towards back.
6. Sew side and sleeve seams. Serge and press seams towards back.
7. Sew shoulder seams of neck facings. Press seams open. Serge outer edge. Pin facing to dress, right sides together, and sew. Turn facing to the inside and press. Tack facing to shoulder seams and zipper tape.
8. Serge lower edge of sleeve. To make the cuff: fold lower edge of sleeve to wrong side, and sew edge to sleeve. Fold cuff to right side. Tack cuff to seam allowance of sleeve.
9. Serge lower edge of dress, fold to wrong side, press, and topstitch.

TECHNICAL DRAWING:

