

Recommendations on fabric: natural/mixed light-weight fabric suitable for coats.

You will also need: 2 buttons; fusible interfacing.

Seam allowances: all seams 1 cm, on hem - 4.0 cm, hem of sleeve - 2 cm.

**Note on seam allowances:**

- If the pattern has double contour the seam allowances are included. They are 1 cm unless specified otherwise.
- If the pattern has single contour, the seam allowances are NOT included and need to be added when laying out the pattern.

**Note on length of fabric:**

*Attention! The amount of fabric needed for your pattern is not included. It will depend on the selected pattern size, the width, and design of the fabric you plan to use. First, print all the paper patterns and lay them out at the width of fabric you plan to use (usually from 90 to 150 cm). Measure how much fabric you will need. Don't forget to account for pieces that need to be cut multiple times and pieces that are cut on the fold.*



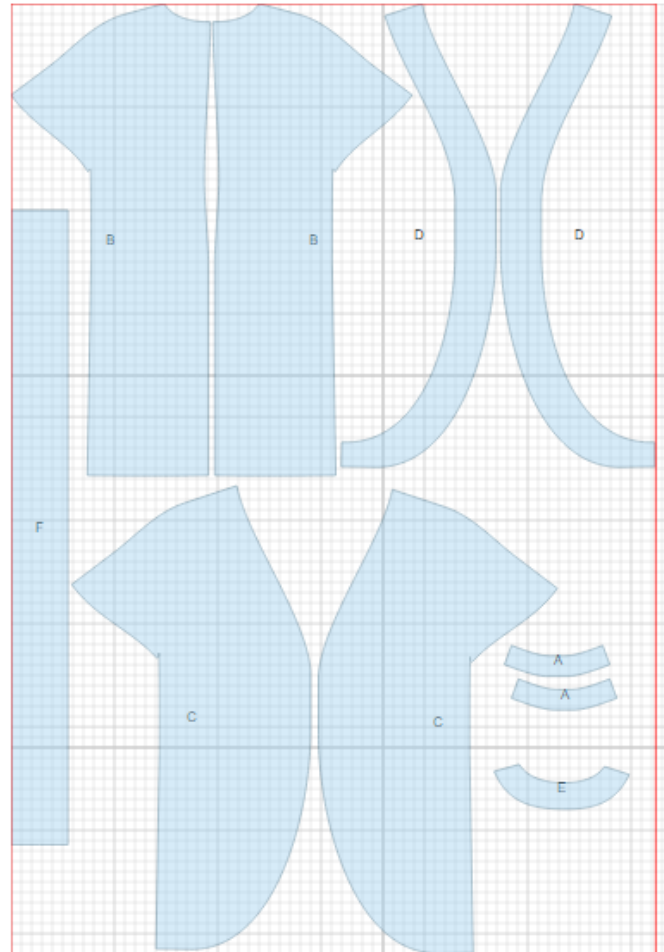
## CUTTING:

### Main fabric:

1. Collar - cut 2 ( A )
2. Back – cut 2 ( B )
3. Front – cut 2 ( C )
4. Center front facing – cut 2 ( D )
5. Back neck facing - cut 1 ( E )
6. Belt - cut 1 ( F )

### Fusible interfacing:

1. Back neck facing - cut 1 ( E )
2. Center front facing – cut 2 ( D )
3. Collar - cut 1 ( A )



---

**INSTRUCTIONS:**

1. Apply fusible interfacing to listed pieces.
2. Sew center back seam. Serge and press sam towards left side. Make decorative stitch at 0.7 cm from seam.
3. Sew outer collar into back neckline. Clip into seam and press open.
4. Sew shoulder seams together with collar edge. Clip into seams, and press open.
5. Sew inner collar into neckline of facing. Clip into seam, and press open. Sew shoulder seams of center front facings, neck facing, and collar seam at the same time. Press seams open. Serge outer edge.
6. Press hem allowance on back and serge edge. Place center front facing and front, right sides together, and sew along center front, and collar edge. Clip seam on curves. Turn front facing and collar right side out, straighten seams.
7. Trim seam allowance of side edge in armhole corner. Serge lower edge of sleeve, turn under, press and topstitch. Sew side seams, matching front facing vertical seam with back hem allowance. Serge and press seams towards back.
8. Hem turned up edge of back by hand.
9. Make decorative stitch along center front at 0.7 cm from the edge. Make buttonholes. Sew outer and inner buttons.
10. Fold belt in half lengthwise, right sides together, and sew on contour leaving an opening for turning.. Turn belt right side out, turn edges of opening inside and make decorative stitch at 0.7 cm from the edge on all sides.

TECHNICAL DRAWING:

