

Recommendations on fabric: natural/mixed fabric suitable for coats.

You will also need: lining; 6 snaps; fusible interfacing.

Seam allowances: all seams 1 cm, on hem - 3.0 cm, hem of sleeve - 3 cm.

Note on seam allowances:

- If the pattern has double contour the seam allowances are included. They are 1 cm unless specified otherwise.
- If the pattern has single contour, the seam allowances are NOT included and need to be added when laying out the pattern.

Note on length of fabric:

Attention! The amount of fabric needed for your pattern is not included. It will depend on the selected pattern size, the width, and design of the fabric you plan to use. First, print all the paper patterns and lay them out at the width of fabric you plan to use (usually from 90 to 150 cm). Measure how much fabric you will need. Don't forget to account for pieces that need to be cut multiple times and pieces that are cut on the fold.



CUTTING:

Main fabric:

1. Back neck facing - cut 1 (A)
2. Center front facing – cut 2 (B)
3. Upper back – cut 2 (C)
4. Lower back – cut 2 (D)
5. Upper front - cut 2 (E)
6. Lower front - cut 2 (F)
7. Pocket bag – cut 2 (G)
8. Off-set welt - cut 2 (H)
9. Sleeve – cut 2 (I)

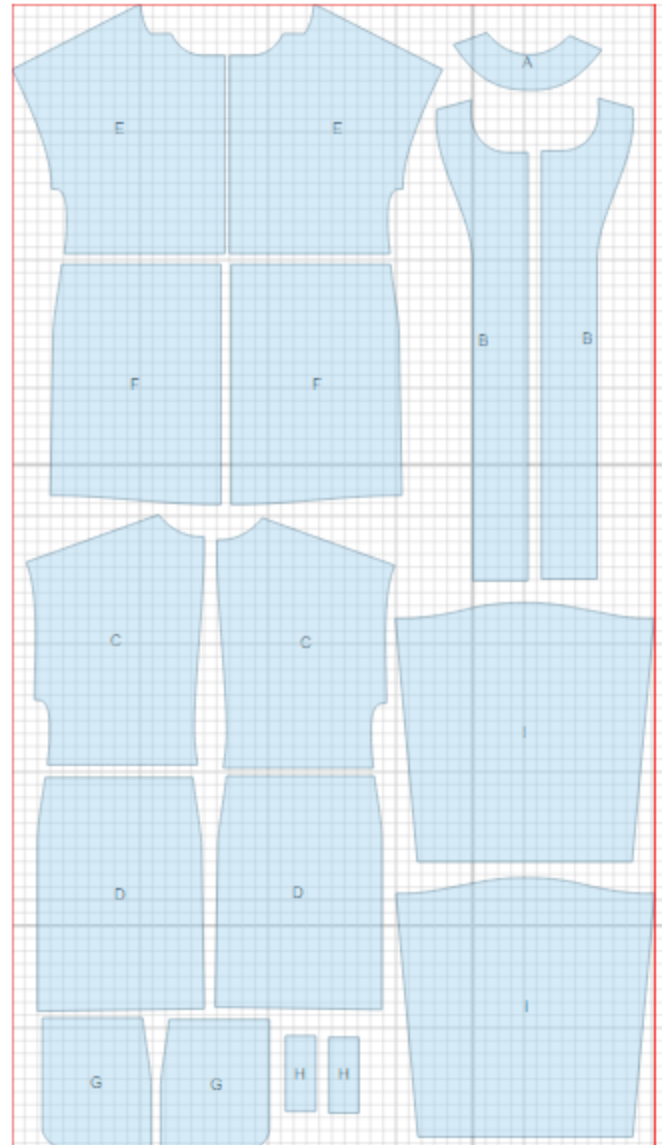
Lining:

1. Pocket bag – cut 2 (G)
2. Upper back – cut 2 (C)
3. Lower back – cut 2 (D)
4. Upper front - cut 2 (E)
5. Lower front - cut 2 (F)
6. Sleeve – cut 2 (I)

*ATTENTION: Lining is cut using main fabric patterns excluding the width of center front facing. Add a pleat on lining.

Fusible interfacing:

1. Back neck facing - cut 1 (A)
2. Center front facing – cut 2 (B)
3. Off-set welt - cut 2 (H)



INSTRUCTIONS:

1. Apply fusible interfacing to listed pieces.
2. Fold off-set welt in half along center line right sides together and sew short sides. Turn welt right side out and press. Serge unfinished edge. Lay pocket bag with right side onto front. Mark pocket location. Sew pocket bag according to marked lines. Finish stitches at parallel lines of pocket marking. From right side stitches should be parallel. Cut pocket opening. Pull pocket bag to wrong side through the opening and straighten edges. Place off-set welt onto right side and sew at 0.5 cm from lining connection line. Turn off-set welt upwards and topstitch short sides. Lay pocket lining under pocket and make fastening stitch on contour from right side. Fasten pocket pieces on side and upper edges.
3. Sew center seam of upper backs and lower backs. Press seams open. Sew lower back to upper back, press seam upwards.
4. Sew darts on fronts. Press bulk towards center. Sew lower fronts to upper fronts, press seams upwards.
5. Make a decorative stitch along waist seam at 0.5 cm.
6. Sew shoulder seams. Press open.
7. Sew sleeves into open armholes. Press seams open. Sew side and sleeve seams. Press seams open.
8. Sew snaps on right front facing. Sew lining pieces leaving an opening in left sleeve seam. Sew shoulder seams of back neck facing and center front facings. Press seams open. Sew lining to neck facing and center front facing. Press seam towards lining. Place facing on right side of coat and sew to hem, center front, neckline and lower edge of sleeves. Turn coat right side out through the opening in sleeve. Sew opening closed.
9. Sew snaps on left front band.

TECHNICAL DRAWING:

