

Recommendations on fabric: natural or mixed blouse fabric.

You will also need: fusible interfacing.

Seam allowances: hem of blouse / sleeve – 2 cm, other seams – 1 cm.

Note on seam allowances:

- If the pattern has double contour the seam allowances are included. They are 1 cm unless specified otherwise.
- If the pattern has single contour, the seam allowances are NOT included and need to be added when laying out the pattern.

Note on length of fabric:

Attention! The amount of fabric needed for your pattern is not included. It will depend on the selected pattern size, the width, and design of the fabric you plan to use. First, print all the paper patterns and lay them out at the width of fabric you plan to use (usually from 90 to 150 cm). Measure how much fabric you will need. Don't forget to account for pieces that need to be cut multiple times and pieces that are cut on the fold.



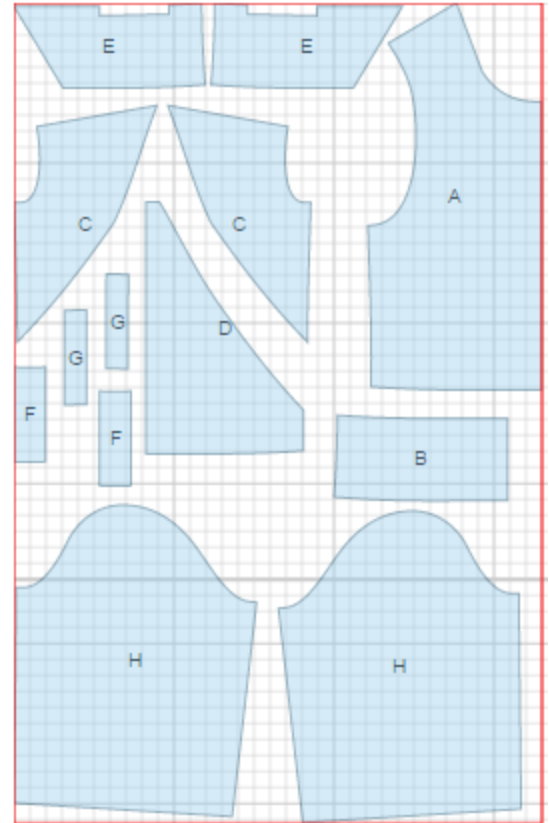
CUTTING:

Main fabric:

1. Back - cut 1 on fold (A)
2. Back placket - cut 2 (B)
3. Side front - cut 2 (C)
4. Front - cut 1 on fold (D)
5. Front placket - cut 2 (E)
6. Off-set welt - cut 2 (F)
7. Underlay piece - cut 2 (G)
8. Sleeve - cut 2 (H)

Fusible interfacing:

1. Off-set welt - cut 2 (F)



INSTRUCTIONS:

1. Apply fusible interfacing to listed pieces.
2. Sew back placket to back, serge and press seam upwards. Topstitch at 0.7 cm from seam.
3. Cut a bias tape of 4 cm wide. Length is equal to back neckline + 5 cm. Fold bias tape in half lengthwise right side out and press. Pin bias tape to back neckline from right side and sew. Clip into seam, turn bias tape to wrong side and topstitch along the fold. Press.
4. Sew side fronts to front. Serge and press seams towards center. Topstitch at 0.7 cm from seam.
5. Press off-set welt in half along centerline right side out. Pin off-set welt to front placket from right side and sew lower side. Clip seams in placket corners, turn placket right side out, straighten and sew short sides.
6. Serge center edges of front placket, fold under, press and topstitch. Lay right placket over left and pin on upper edge. Sew front placket to front, press seam upwards.
7. Place underlay piece on off-set welt from wrong side and topstitch into front placket connecting seam. Serge seam. Topstitch at 0.7 cm from placket connecting seam.
8. Cut a bias tape of 4 cm wide. Length is equal to front upper edge + 5 cm. Fold bias tape in half lengthwise right side out and press. Place back shoulder edges to front right sides together, baste. Pin bias tape to front neckline from right side, and sew. Turn bias tape to wrong side, press, and topstitch along the fold onto front.
9. Make a gathering stitch along sleeve cap. Sew sleeve into open armhole adjusting ease. Serge and press seam towards sleeve.
10. Sew sleeve and side seam. Serge and press seams towards back.
11. Turn lower edge of blouse and lower edge of sleeve twice under at 1 cm, press, and topstitch.

TECHNICAL DRAWING:

