

Recommendations on fabric: natural or mixed dress fabric with lycra.

You will also need: fusible interfacing, invisible zipper.

Seam allowances: hem – 2.5 cm, lower edge of sleeve - 1.2 cm, other seams – 1.0 cm.

**Note on seam allowances:**

- If the pattern has double contour the seam allowances are included. They are 1 cm unless specified otherwise.
- If the pattern has single contour, the seam allowances are NOT included and need to be added when laying out the pattern.

**Note on length of fabric:**

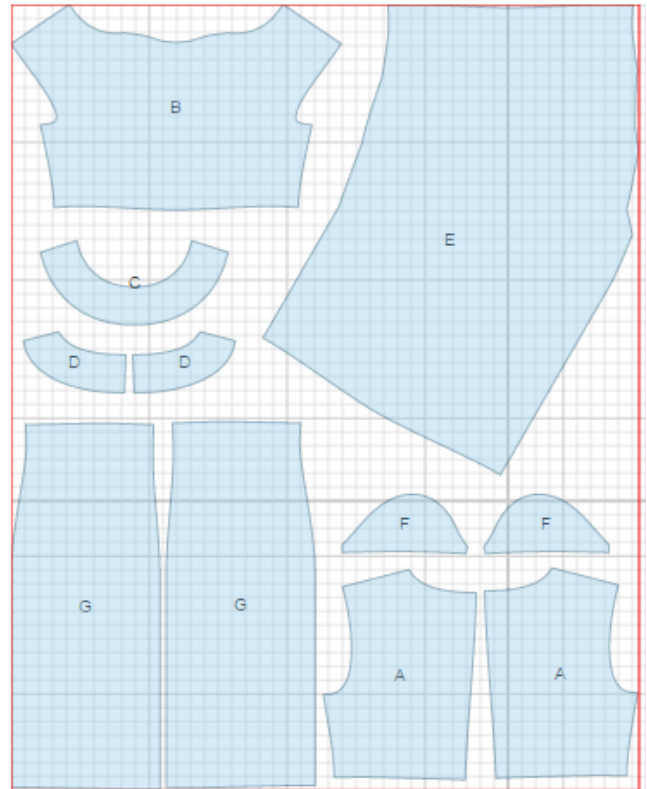
*Attention! The amount of fabric needed for your pattern is not included. It will depend on the selected pattern size, the width, and design of the fabric you plan to use. First, print all the paper patterns and lay them out at the width of fabric you plan to use (usually from 90 to 150 cm). Measure how much fabric you will need. Don't forget to account for pieces that need to be cut multiple times and pieces that are cut on the fold.*



## CUTTING:

### Main fabric:

1. Upper back - cut 2 (A)
2. Upper front - cut 1 (B)
3. Front neck facing - cut 1 (C)
4. Back neck facing - cut 2 (D)
5. Lower front - cut 1 (E)
6. Sleeve - cut 2 (F)
7. Lower back - cut 2 (G)



### Fusible interfacing:

1. Front neck facing - cut 1 (C)
2. Back neck facing - cut 2 (D)

---

## INSTRUCTIONS:

1. Apply fusible interfacing to neck facings.
2. Sew darts on backs. Press bulk towards center. Sew upper backs to lower backs. Serge and press seams upwards. Serge center back edges separately. Sew center back seam from zipper mark down to hem. Press seam open pressing slit for zipper. Install zipper.
3. Make and fasten pleats on lower front. Make and fasten pleats on upper front. Sew upper front to lower front. Serge and press seam upwards.
4. Sew shoulder and side seams. Serge and press seams towards back.
5. Sew shoulder seams of neck facings. Press seams open. Serge outer edge. Pin facing to dress, right sides together, and sew. Turn facing to the inside and press. Tack facing to shoulder seams and zipper tape.
6. Serge lower edge of sleeve, turn under, and topstitch. Sew sleeves into armholes matching notches. Serge seams.
7. Cut a bias tape of 4 cm wide. Length is equal to the length of lower part of armhole + 6 cm. Fold bias tape in half lengthwise right side out and press. Place bias tape on armhole from right side leaving tails, and sew. Turn bias tape to wrong side, clip into seam, and topstitch along the fold. Press.
8. Serge lower edge of dress, fold to wrong side, press, and topstitch.

TECHNICAL DRAWING:

