

Recommendations on fabric: natural or mixed suiting fabric, contrast fabric for trimming.

You will also need: fusible interfacing, lining, 1 button, 1 decorative clasper.

Seam allowances: all seams – 1 cm.

Note on seam allowances:

- If the pattern has double contour the seam allowances are included. They are 1 cm unless specified otherwise.

- If the pattern has single contour, the seam allowances are NOT included and need to be added when laying out the pattern.

Note on length of fabric:

Attention! The amount of fabric needed for your pattern is not included. It will depend on the selected pattern size, the width, and design of the fabric you plan to use. First, print all the paper patterns and lay them out at the width of fabric you plan to use (usually from 90 to 150 cm). Measure how much fabric you will need. Don't forget to account for pieces that need to be cut multiple times and pieces that are cut on the fold.



CUTTING:

Main fabric:

1. Back hem facing - cut 2 (A)
2. Front hem facing - cut 2 (B)
3. Side back - cut 2 (C)
4. Side front - cut 2 (D)
5. Center back - cut 2 (E)
6. Back neck facing - cut 1 (F)
7. Center front - cut 2 (G)
8. Front facing - cut 2 (H)
9. Collar - cut 4 (I)
10. Inner belt - cut 2 (J)
11. Outer top belt - cut 2 (K)
12. Outer lower belt - cut 2 (L)

Decorative Fabric:

13. Collar trimming - cut 2 (M)
14. Belt trimming - cut 2 (N)

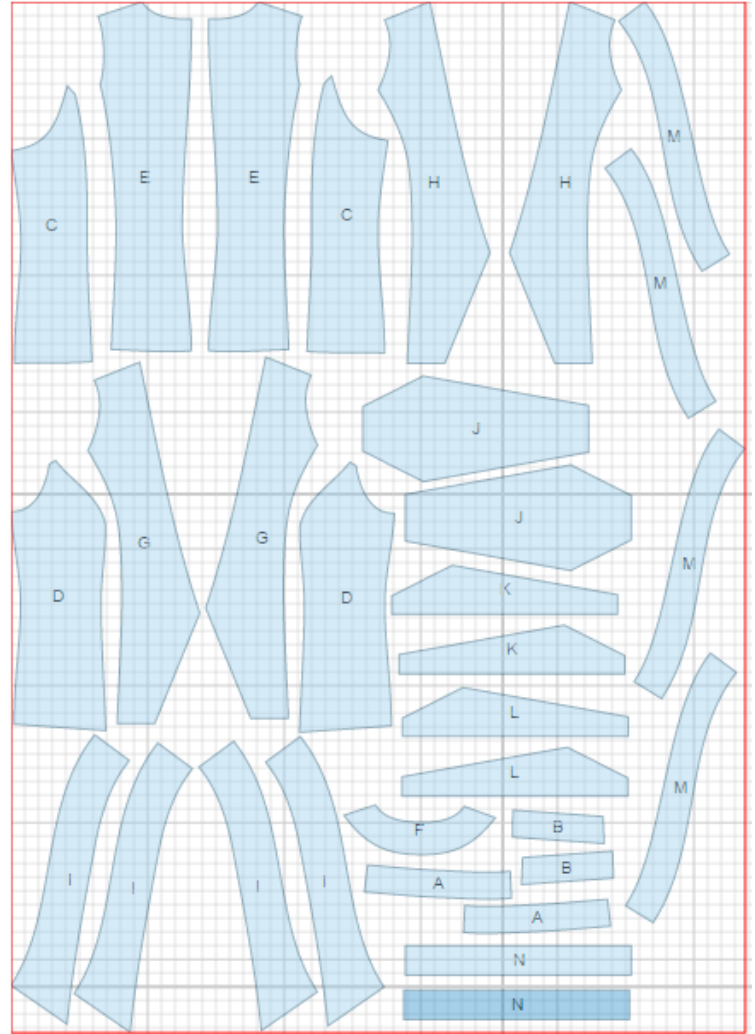
Lining:

1. Center back - cut 2 (E)
2. Side back - cut 2 (C)
3. Side front - cut 2 (D)

Note: lining pieces are cut excluding facings.

Fusible interfacing:

1. Front facing - cut 2 (H)
2. Collar - cut 2 (I)
3. Collar trimming - cut 2 (M)
4. Back neck facing - cut 1 (F)
5. Back hem facing - cut 2 (A)
6. Front hem facing - cut 2 (B)



INSTRUCTIONS:

1. Apply fusible interfacing to listed pieces.
2. Sew center back seam, press towards left side. Sew side backs to center back, press seams towards center.
3. Sew side fronts to center fronts, press seams towards center.
4. Sew side and shoulder seams. Press seams towards back.
5. Sew trim to collar, press seams towards trim. Sew center collar seams, press seam open. Place collars right sides together and sew outer contour.. Clip seams on curves, trim in corners. Turn collar right side out, straighten and press. Baste collar to neckline.
6. Sew side pieces of lining to center pieces, press seams towards center. Sew hem facings to lining, press seams upwards. Sew center back seam, press towards left side. Sew back neck facings and front facings to lining. Press seams towards main fabric. Sew shoulder and side seams leaving an opening in left side seam.
7. Pin lining to main garment, right sides together, and sew along center front, neckline, and hem. Clip seams on curves, trim in corners. Turn vest right side out, straighten and press.
8. Finish armholes through the opening in left side seam in two steps: back armhole from shoulder seam to side seam, and front armhole from shoulder seam to side seam. Sew the opening closed.
9. Make a buttonhole on right front according to marking, sew button on left front.
10. Sew top and lower sections of belt to trim. Press seam towards trim.. Sew center back seams of belt, press seams open. Pin outer belt and inner belt, right sides together, and sew upper and lower edges. Trim seams in corners, turn belt right side out, straighten and press. Serge short edges. Set serged sides of belt into clasper and topstitch.

TECHNICAL DRAWING:

