

Recommendations on fabric: low to medium stretch-knit, natural or mixed dress fabric.

You will also need: zipper, decorative leather triangles.

Seam allowances: outer edge of hood – 1.5 cm, pocket connecting edge - 0.5 cm, other seams – 0.7 cm.

Note on seam allowances:

- If the pattern has double contour the seam allowances are included. They are 1 cm unless specified otherwise.
- If the pattern has single contour, the seam allowances are NOT included and need to be added when laying out the pattern.

Note on length of fabric:

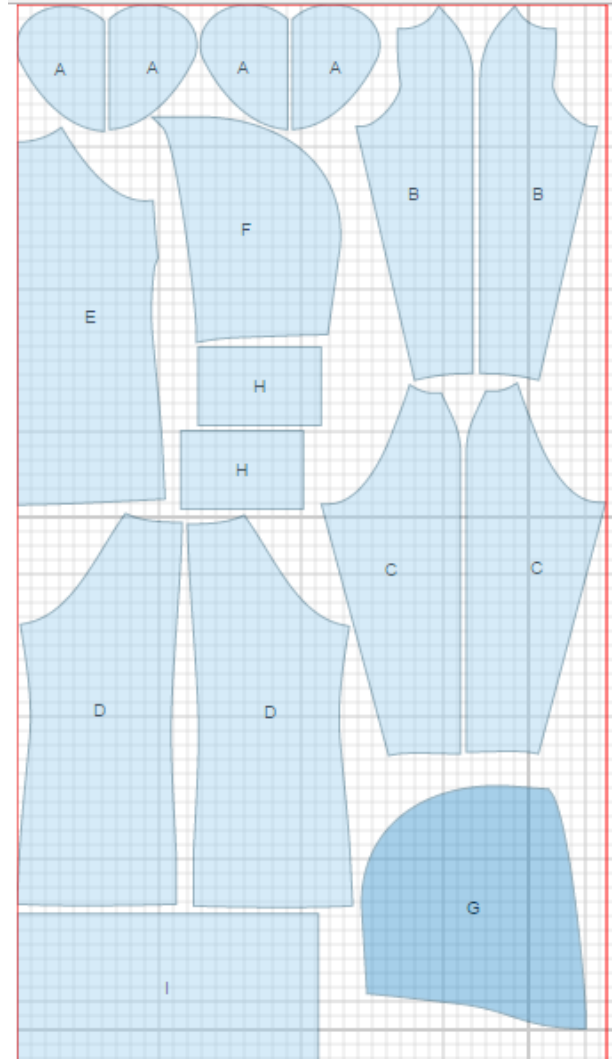
Attention! The amount of fabric needed for your pattern is not included. It will depend on the selected pattern size, the width, and design of the fabric you plan to use. First, print all the paper patterns and lay them out at the width of fabric you plan to use (usually from 90 to 150 cm). Measure how much fabric you will need. Don't forget to account for pieces that need to be cut multiple times and pieces that are cut on the fold.



CUTTING:

Main fabric:

1. Pocket bag - cut 4 (A)
2. Front sleeve cut 2 (B)
3. Back sleeve - cut 2 (C)
4. Back - cut 2 (D)
5. Front - cut 1 on fold (E)
6. Left hood - cut 1 (F)
7. Right hood - cut 1 (G)
8. Cuff - cut 2 (H)
9. Lower placket - cut 1 (I)



Advice: Knit fabric pieces are sewn together with special elastic or narrow zig-zag stitch. Seam allowance on hem is stitched with twin needles to save stretchiness. Pieces can also be sewn together with 3 or 4 – thread serger. When serging, cut seam allowances to 0.6 – 0.8 cm.

INSTRUCTIONS:

1. Sew bust darts on front. Press bulk upwards.
2. Mark pocket location. Cut pocket opening. Sew pocket bags placing them from right side of front. Serge seams. Turn pocket bags to the wrong side through the opening and sew them together. Topstitch leather triangles on pocket ends.
3. Sew center back seam. Serge and press seam towards left side.
4. Sew one front sleeve to right side of front. Serge and press seam towards sleeve. Serge seam allowances of other front sleeve separately and sew seam to the mark on left side of front. Press slit for zipper. Place zipper under seam allowances and sew.
5. Sew back sleeves to back. Serge and press seams towards sleeve. Sew upper sleeve seams. Serge seams.
6. Sew side seams and sleeves with one continuous stitch. Serge and press seams.
7. Shape lower placket into ring and sew ends together. Fold placket in half lengthwise, right sides out. Sew placket to lower edge of tunic. Serge and press seams towards tunic.
8. Shape cuff into ring and sew ends together. Fold cuff in half lengthwise, right sides out. Sew cuff to lower edge of sleeve. Serge and press seam towards sleeve.
9. Sew hood seam and serge. Serge outer edge of hood. Turn under and topstitch. Sew hood into neckline. Serge seam.

TECHNICAL DRAWING:

